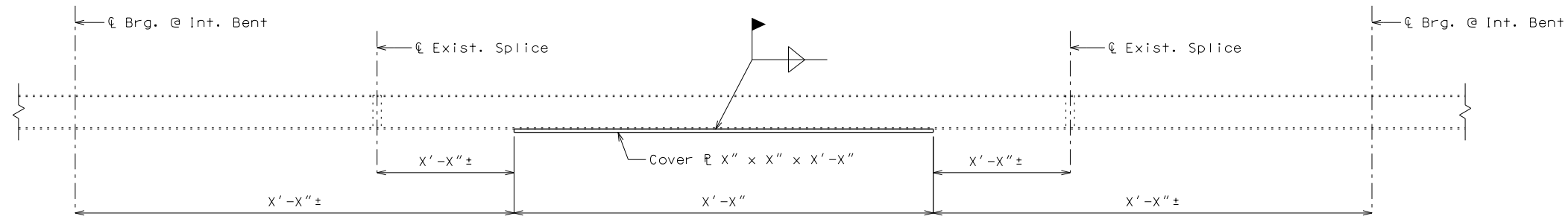


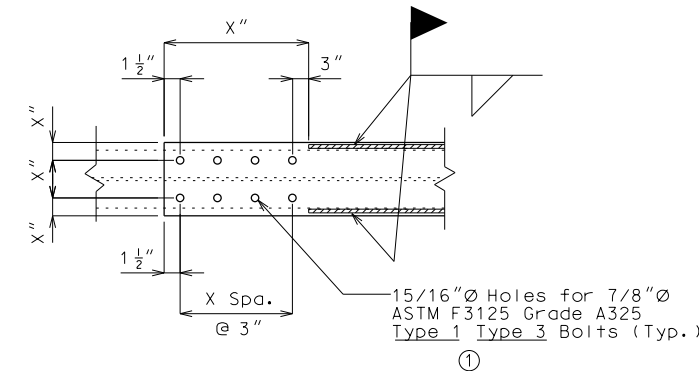
PART ELEVATION OF EXTERIOR BEAM SHOWING COVER PLATE INSTALLATION
SPAN (X-X) AND SPAN (X-X)



PART ELEVATION OF EXTERIOR BEAM SHOWING COVER PLATE INSTALLATION
SPAN (X-X)

Standard Drawing Guidance (do not show on plans):

- ① Use Type 3 for weathering steel bolted connections and Type 1 for plain or galvanized steel bolted connections.



TYPICAL DETAIL OF THE
ENDS OF COVER PLATES
(BOTTOM VIEW)

Notes:

Beam with end-bolted cover plates shall be installed in the following sequence after existing bridge deck is removed:

1. Drill holes in cover plate and flange.
2. Clean faying surfaces. (See Special Provisions)
3. Install and tighten bolts.
4. Weld cover plate to flange.

Fabricated Structural Steel shall be ASTM A709 Grade 36, except as noted.

Payment for ____ pounds of new cover plates complete in place will be considered completely covered by the contract lump sum price for Strengthening Existing Beams.

Notch toughness is required for all cover plates.

"THIS MEDIA SHOULD NOT BE CONSIDERED A CERTIFIED DOCUMENT."

DATE PREPARED
7/7/2020

ROUTE
*
DISTRICT
BR

STATE
MO
SHEET NO.
*

COUNTY
*

JOB NO.
*

CONTRACT ID.

PROJECT NO.

BRIDGE NO.
REDECK07

DESCRIPTION

DATE

MISSOURI HIGHWAYS AND TRANSPORTATION
COMMISSION



105 WEST CAPITOL
JEFFERSON CITY, MO 65102
1-888-ASK-MODOT (1-888-275-6636)

IF A SEAL IS PRESENT ON THIS SHEET IT HAS BEEN ELECTRONICALLY SEALED AND DATED.

STRENGTHENING EXISTING BEAMS

Note: This drawing is not to scale. Follow dimensions.

Sheet No. of _