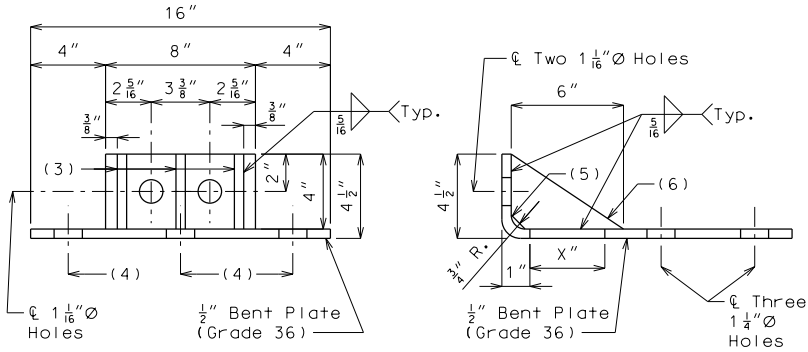


- (1) UPPER POST-TO-BENT PLATE CONN.
- \varnothing 1" ASTM F3125 Grade A325 Type 1 Bolt with hex nut and hardened washer
 - \varnothing 1 1/16" x 1 1/2" Vertical Slotted Hole in both post flanges
 - \varnothing 1 1/16" Hole in washer plate and bent plate

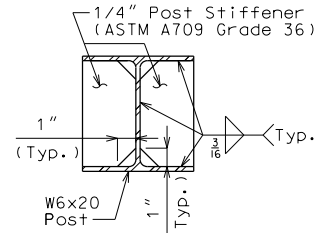
- (1) LOWER POST-TO-GIRDER CONNECTION
- \varnothing Resin Anchor System to include:
 - 7/8" \varnothing (Min.) Drilled Hole in girder or as recommended by manufacturer
 - 1" \varnothing Hole in inside post flange and both end plates
 - 3/4" \varnothing ASTM A449 Type 1 Threaded Rod snug tight & embedded 5 inches in girder
 - Hex Nut and Hardened Locking Washer
- (1) OPTIONAL LOWER POST-TO-TIE CONNECTION
- \varnothing 3/4" \varnothing ASTM F3125 Grade A325 Type 1 Bolt with hex nut and hardened washer
 - \varnothing 15/16" Hole in inside post flange and outside end plate

- (2) BENT PLATE-TO-DECK CONNECTION
- \varnothing Resin Anchor Systems each to include:
 - 1 1/8" \varnothing (Min.) Drilled Hole in slab or as recommended by manufacturer
 - 1 1/4" \varnothing Hole in bent plate
 - 1" \varnothing ASTM A449 Type 1 Threaded Rod snug tight & embedded 8 inches in slab
 - Hex Nut and 2 1/2" \varnothing Hardened Locking Washer

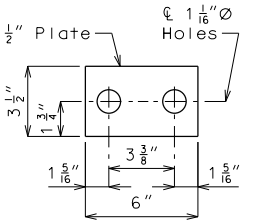


- (3) 1/2" x 6" x 4" Wedge Bracket
 (4) \varnothing Two 1 1/4" \varnothing Holes
 (5) 3/4" Coped Corners
 (6) Three 1 1/2" x 6" x 4" Wedge Brackets

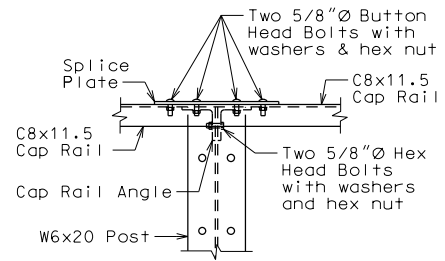
BENT PLATE AND WEDGE BRACKET



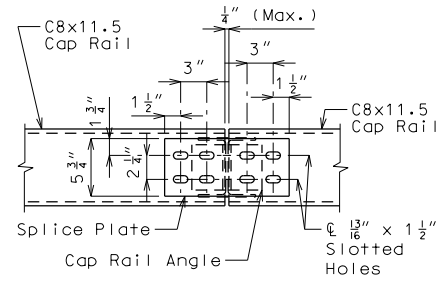
POST STIFFENERS



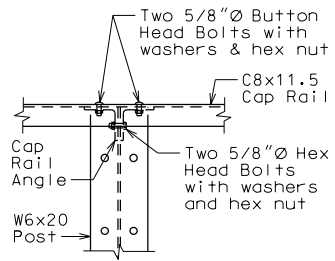
WASHER PLATE



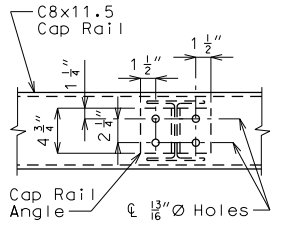
ELEVATION OF TYPICAL SPLICE



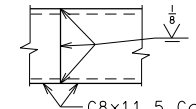
PLAN OF TYPICAL SPLICE



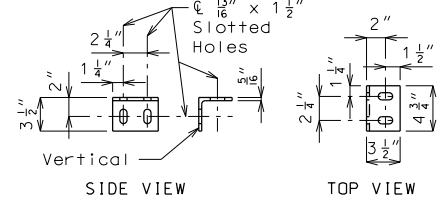
ELEVATION OF RAIL POST CONNECTION



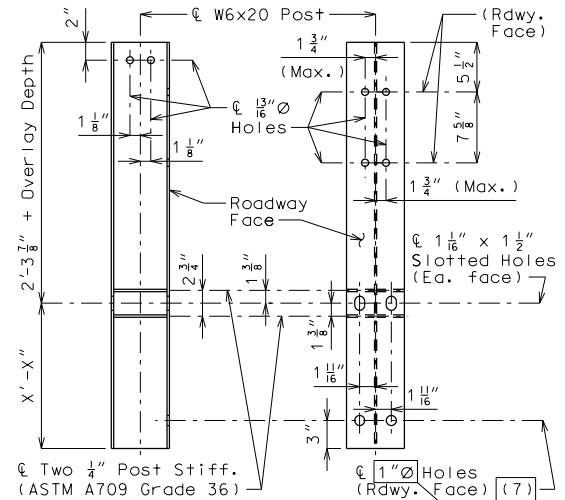
PLAN OF RAIL POST CONNECTION



OPTIONAL SPLICE
 One shop or field splice per panel may be provided at any location.

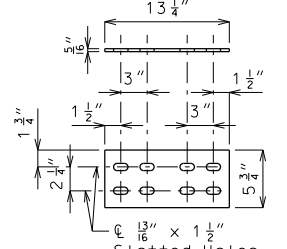


CAP RAIL ANGLE
 L3 1/2 x 3 1/2 x 5/16

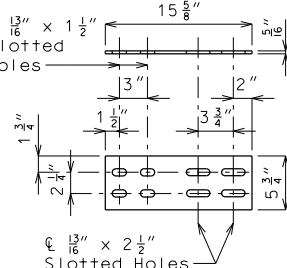


DETAILS OF POST

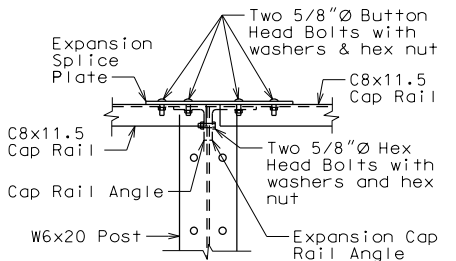
- (7) 1 5/8" \varnothing for optional connection



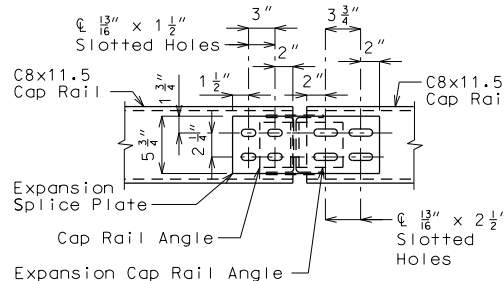
SPLICE PLATE



EXPANSION SPLICE PLATE

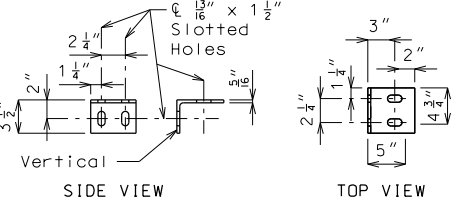


ELEVATION OF EXPANSION SPLICE

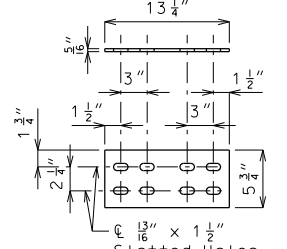


PLAN OF EXPANSION SPLICE

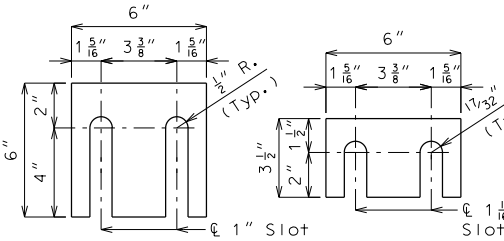
Expansion slots shall be on the same side of post as the expansion joint.



EXPANSION CAP RAIL ANGLE
 L5 3/2 x 3 5/16



SPLICE PLATE



SHIM PLATES

Shim plates 6 x 3 x 1/16-inch may be used between the W6x20 post and 1/2-inch bent plate connection as required for horizontal alignment.
 Shim plates may vary in thickness from 1/16 inch to the thickness required, and may be used in multiples.
 Shim plates shall be galvanized after fabrication.

Standard Drawing Guidance (do not show on plans):

- 1 Remove these details when this sheet is used in combination with drawing THRIE 4D, and use 15/16" for diameter of the bottom two holes in the Details of Post.
 2 Replace with below notes when this sheet is used in combination with drawing THRIE 4D.

Detailed Checked

Note: This drawing is not to scale. Follow dimensions.

Sheet No. of

"THIS MEDIA SHOULD NOT BE CONSIDERED A CERTIFIED DOCUMENT."

DATE PREPARED 7/30/2020	
ROUTE *	STATE MO
DISTRICT BR	SHEET NO. *
COUNTY *	
JOB NO. *	
CONTRACT ID. *	
PROJECT NO.	
BRIDGE NO. THRIE 4B	

DESCRIPTION	DATE

MISSOURI HIGHWAYS AND TRANSPORTATION COMMISSION
 105 WEST CAPITAL JEFFERSON CITY, MO 65102
 1-888-ASK-MODOT (1-888-275-6636)



IF A SEAL IS PRESENT ON THIS SHEET IT HAS BEEN ELECTRONICALLY SEALED AND DATED.