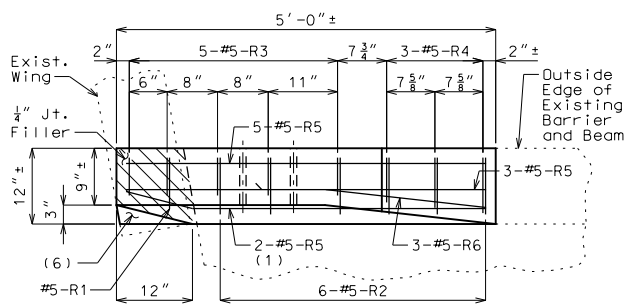


Existing Wearing Surface
Guidance: (Do not show on plans.)
Substitute alternate Plan for skewed structures.
Modify details as needed to suit your structure.
Use with BEM02-2 (Bill of Reinforcing Steel).

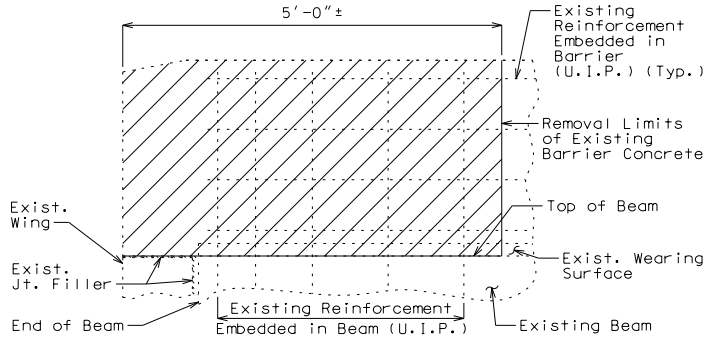
Skewed
Plan



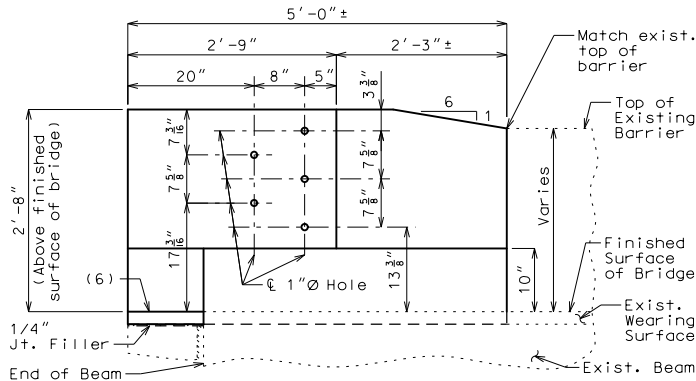
BEM02-1_EndMod_WS Effective: July 2021 Supersedes: Feb. 2021

SEC/SUR x TWP x RGE x

U.I.P. & REHAB. EXISTING (x'-x'-x') SPANS

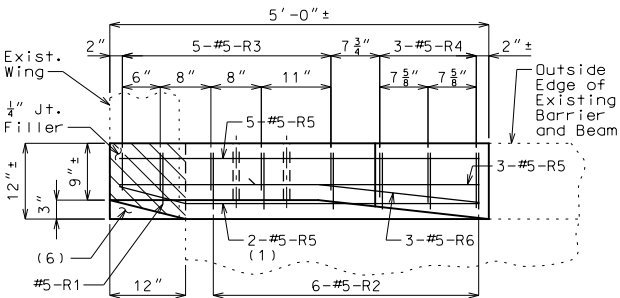


PART ELEVATION SHOWING CONCRETE REMOVAL

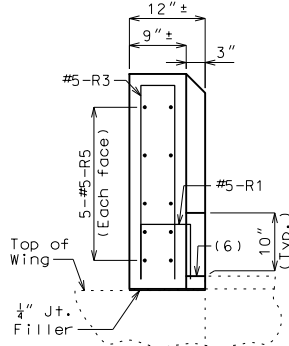


ELEVATION

Estimated Quantities	
Item	Total
Barrier End Modification	each 4

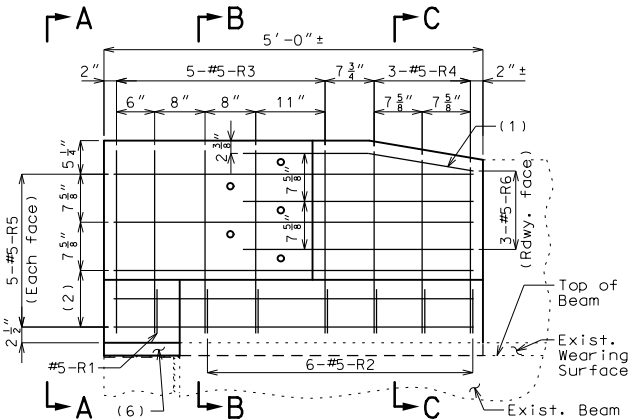


PLAN (3)

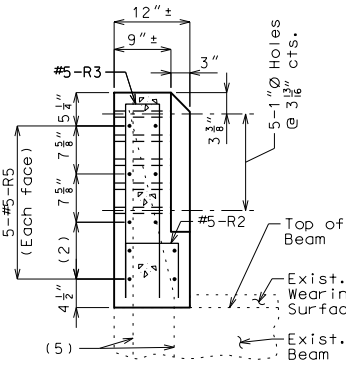


ELEVATION A-A

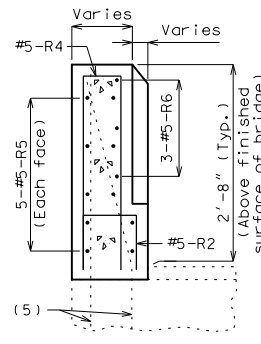
- (1) Bend in field.
- (2) 2 Spa. @ 4 1/2"
- (3) Existing reinforcement not shown for clarity.
- (4) Existing longitudinal reinforcement not shown for clarity.
- (5) Existing reinforcement embedded in beam (U.I.P.) (Bend in field as needed) (Typ.)
- (6) Fill with mortar or concrete.



ELEVATION SHOWING REINFORCEMENT (3)



SECTION B-B (4)



SECTION C-C (4)

General Notes:

Design Specifications:
2002 AASHTO LFD (17th Ed.) Standard Specifications

Design Unit Stresses:
Class B-1 Concrete f'c = 4,000 psi
Reinforcing Steel (Grade 60) fy = 60,000 psi

Reinforcing Steel:
Minimum clearance to reinforcing steel shall be 1 1/2", unless otherwise shown.

Miscellaneous:
One lane of traffic shall remain open during construction. See roadway plans for traffic control.

All exposed edges of barrier shall have either a 1/2-inch radius or a 3/8-inch bevel, unless otherwise shown.

Outline of existing work is indicated by light dashed lines. Heavy lines indicate new work.

Contractor shall verify all dimensions in field before ordering new material.

All reinforcement in barrier end modification shall be epoxy coated.

Bars bonded in existing concrete not removed shall be cleanly stripped and embedded into new concrete where possible. If length is available, existing bars shall extend into new concrete at least 40 diameters for plain bars and 30 diameters for deformed bars, unless otherwise noted.

The area exposed by the removal of concrete and not covered with new concrete shall be coated with a qualified special mortar in accordance with Sec 704.

Cost of removing existing barrier concrete, and cost of furnishing and installing new concrete, new reinforcing steel, and any other work incidental to the barrier end modification, complete in place, will be considered completely covered by the contract unit price for Barrier End Modification.

REPAIRS TO BRIDGE: ROUTE _ OVER

ROUTE _ FROM ROUTE _ TO ROUTE _
ABOUT _ MILES _ OF ROUTE _
BEGINNING STATION x+x.x± (MATCH EXISTING)

Detailed
Checked

Note: This drawing is not to scale. Follow dimensions.

Sheet No. 1 of 2

BEM02-1_EndMod_WS.dgn 11:03:22 AM 9/9/2021

MISSOURI HIGHWAYS AND TRANSPORTATION
COMMISSION



105 WEST CAPITAL
JEFFERSON CITY, MO 65102
1-888-ASK-MODOT (1-888-275-6636)

DESCRIPTION

DATE

BRIDGE NO.
BEM02-1

PROJECT NO.

CONTRACT ID.

JOB NO.

COUNTY

DISTRICT

ROUTE

STATE

DATE PREPARED

9/9/2021

BR

MO

1

x

x

x

x

x

x

x

x

x

x

x

x

x