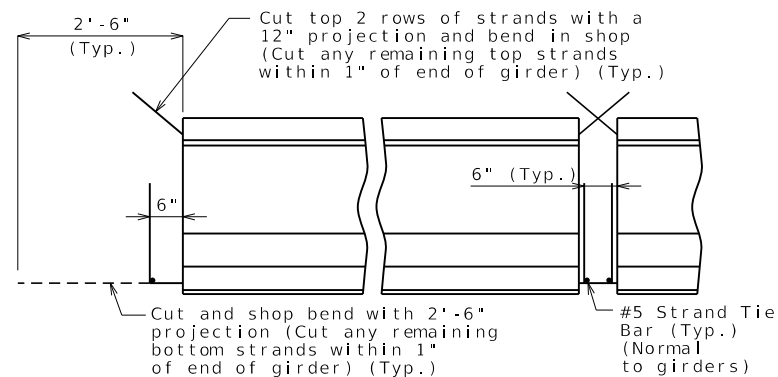


DIMENSIONS



GIRDER END OF GIRDER
STRAND ARRANGEMENT

+ Indicates prestressing strand. ○ Indicates cut & shop bend with 2'-6" projection.



END BENT INTERMEDIATE BENT

STRANDS AT GIRDER ENDS

BILL OF REINFORCING STEEL - EACH GIRDER				BENDING DIAGRAM	
NO.	SIZE & MARK	ACTUAL LENGTH	SHAPE		
XXX	X A1	X' - X"	20		
XXX	X B1	X' - X"	11		
16	6 B2	3' - 5"	11		
XXX	4 C1	13"	10		
XXX	4 D1	2' - 3"	9		

All dimensions are out to out.

Hooks and bends shall be in accordance with the CRSI Manual of Standard Practice for Detailing Reinforced Concrete Structures, Stirrup and Tie Dimensions.

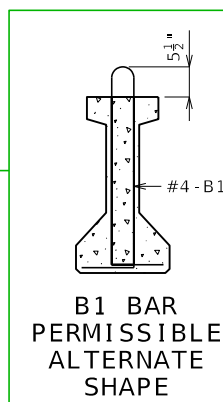
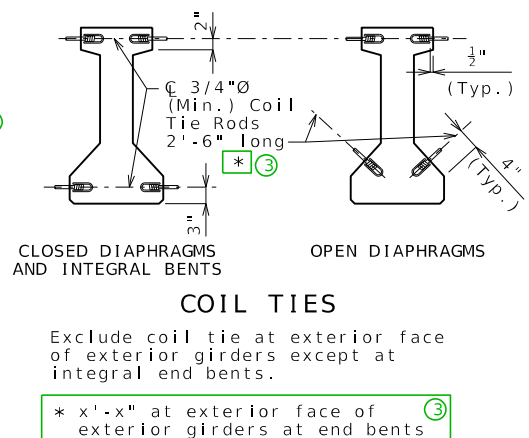
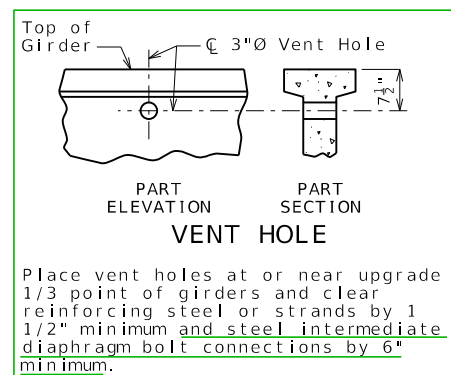
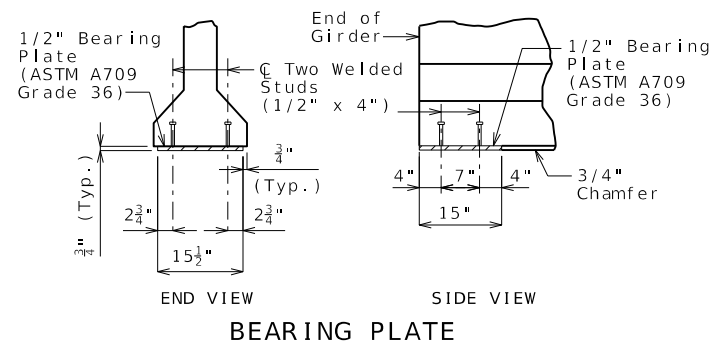
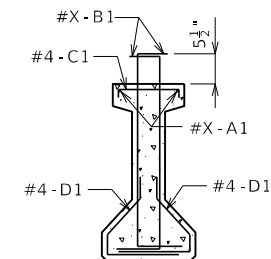
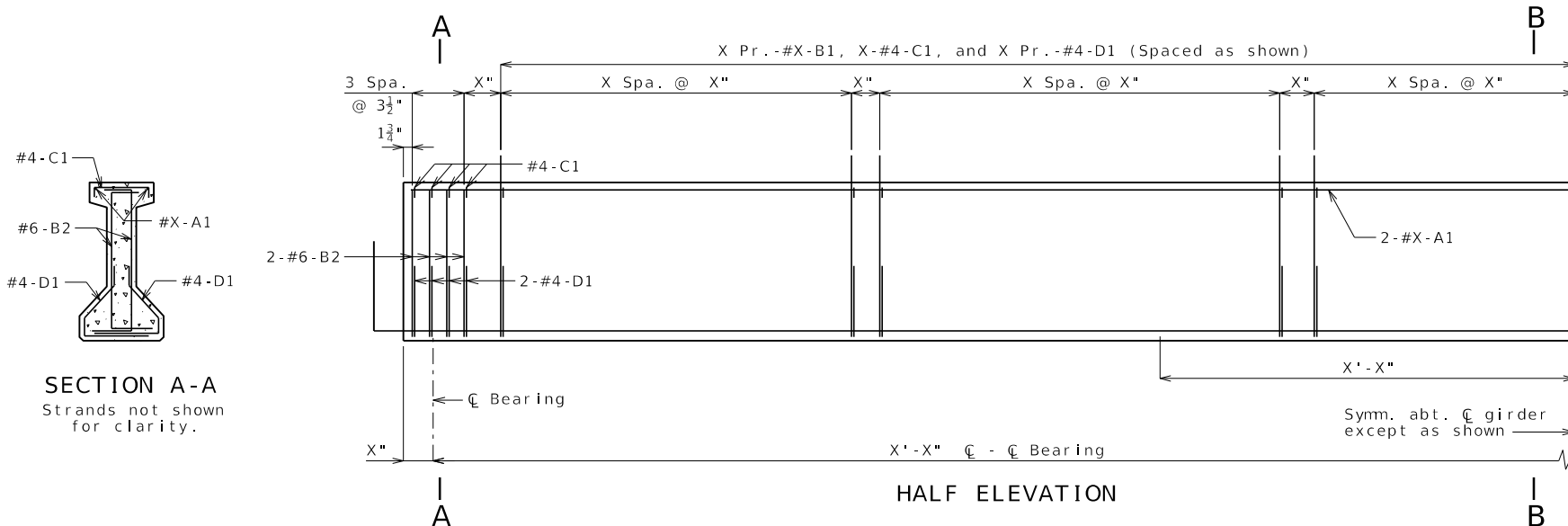
Actual lengths are measured along centerline of bar to the nearest inch.

Minimum clearance to reinforcing shall be 1".

All reinforcement shall be Grade 60.

The two D1 bars may be furnished as one bar at the fabricator's option.

All B1 bars shall be epoxy coated.



General Notes:

Concrete for prestressed girders shall be Class A-1 with $f'c =$ psi and $f'ci =$ psi.

Use 8 strands, 1/2"Ø Grade 270, with an initial prestress force of 4 kips.

Pretensioned members shall be in accordance with Sec 1029.

Fabricator shall be responsible for location and design of lifting devices.

Exterior and interior girders are the same except: coil ties, coil inserts for slab drains, holes for steel intermediate diaphragms.

For Girder Camber Diagram, see Sheet No.

The 1 1/2"Ø holes shall be cast in the web for steel intermediate diaphragms. Drilling is not allowed. For location of holes and details of steel intermediate diaphragms, see Sheet No.

For location of coil inserts at slab drains,
see Sheet No. .

For location of coil ties at concrete bent diaphragms, see Sheets No. & .

DATE PREPARED	
10/21/2022	
ROUTE	STATE
X	MO
DISTRICT	SHEET NO.
X	X
COUNTY	
X	
JOB NO.	
X	
CONTRACT ID.	

PROJECT NO.
BRIDGE NO.
PSI 01

[illegible]MISSOURI HIGHWAYS AND TRANSPORTATION
COMMISSION

IF A SEAL IS PRESENT ON THIS SHEET IT HAS BEEN ELECTRONICALLY SEALED AND DATED.