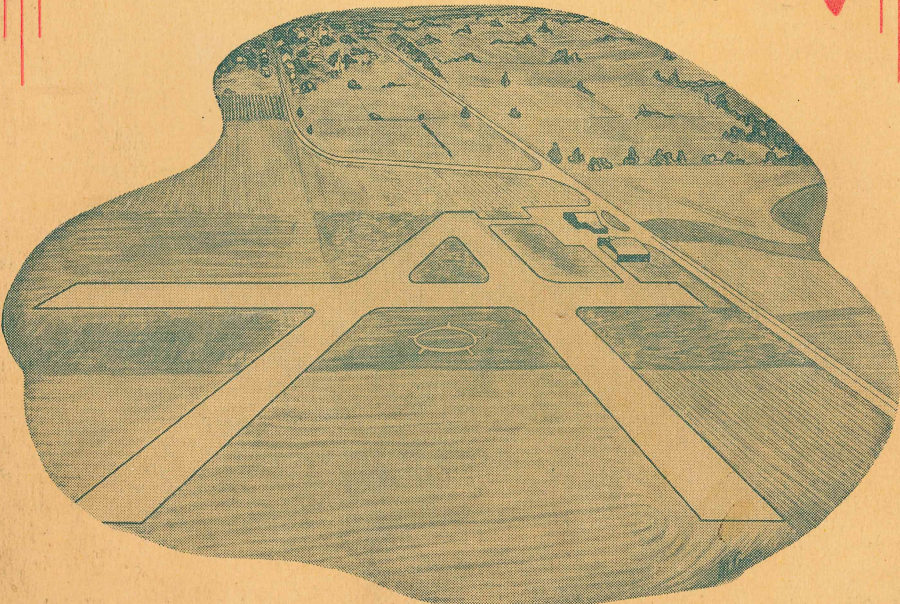


MISSOURI

Airport Directory

1947



Division of Resources and Development

MISSOURI STATE DEPARTMENT OF
BUSINESS AND ADMINISTRATION

JEFFERSON CITY



State Capitol—Jefferson City

PHIL M. DONNELLY
Governor

Information contained herein was compiled from official and unofficial sources including direct contact with operators and officials. It is believed reliable, but due to ever changing conditions such cannot be guaranteed. Consult CAA Airmans Guide for current field conditions, radio aids, etc.

Due to difficulties in obtaining good aerial photographs, several Missouri airports are not illustrated. We hope to include these in subsequent editions.

DIVISION OF RESOURCES AND DEVELOPMENT

STATE OFFICE BUILDING
JEFFERSON CITY, MISSOURI



COMMISSIONERS

GEO. D. CLAYTON, JR., *Chairman*
Hannibal

D. W. SNYDER, JR., *Vice-Chairman*
Jefferson City

LOUIS H. BREUER
Rolla

ALBERT H. COOPER
Maryville

W. F. ENRIGHT
St. Joseph

ALLEN P. GREEN, JR.
Mexico
Chmn., Aviation Committee

W. P. KELTNER
Springfield

M. R. ROWLAND
Caruthersville

GEORGE C. SMITH
St. Louis

HERMAN L. TRABER
Kansas City

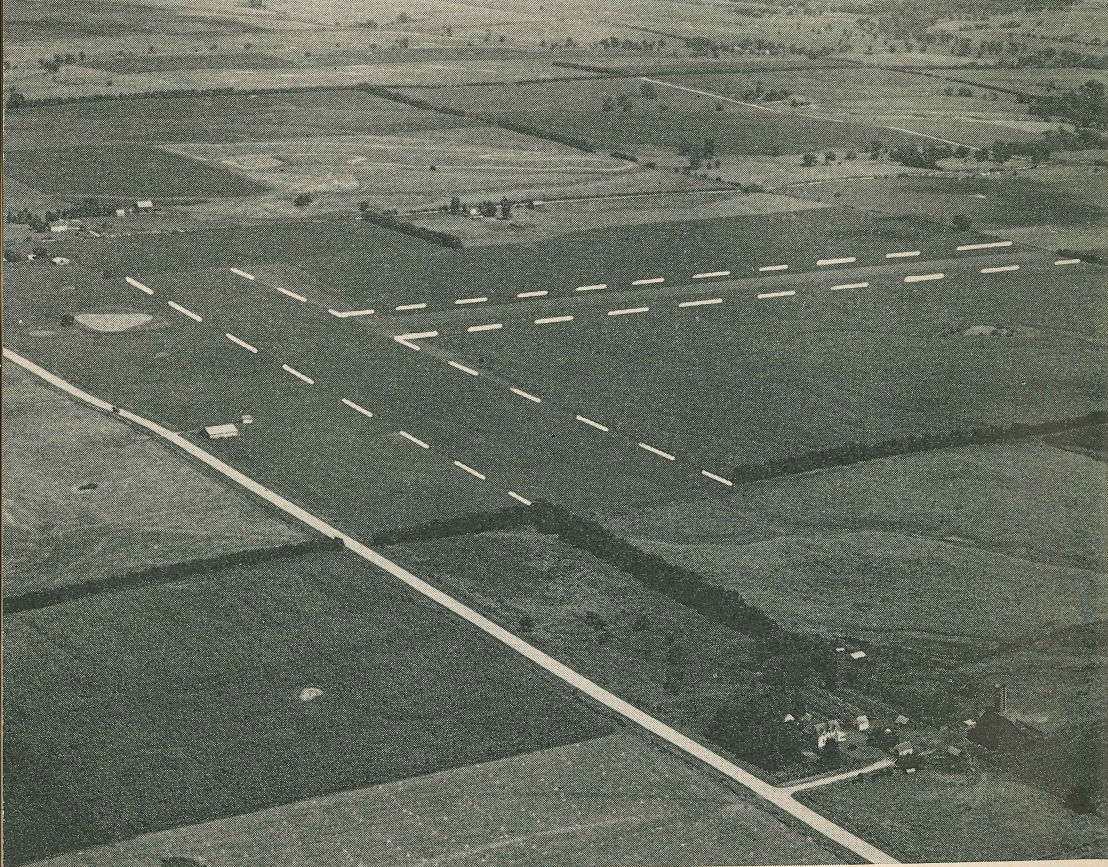


This Missouri Airport Directory is prepared and distributed by the AVIATION SECTION of the DIVISION of RESOURCES and DEVELOPMENT in the interest of aviation development. The Division maintains a small staff of engineers who are available for free consultation on problems relating to aviation in Missouri. Address all communications to Division of Resources and Development, State Office Building, Jefferson City, Missouri.

Other AVIATION publications prepared by Division of Resources and Development:

AIR MARKING
AIRPORT MARKING
MISSOURI AERONAUTICAL CHART
MISSOURI'S AIR AGE EDUCATIONAL
PROGRAM

MISSOURI SKYWAYS
MODEL AIRPARK
NEWS LETTER (Monthly)



Massie—DORAD

BETHANY—Pop. 2700, "Fordyce Field," privately owned, G. P. Edwards, Operator, 160 acres, 4.8 miles ESE on Missouri "K." 2 turf landing strips: N-S 2200x200 and E-W 2200x300, Elev. 1050E. Wind sleeve, oil and 80 oct. gas, 2 hangars, rest rooms, office. Plans for complete service. Hotel accommodations in city. Golf course & park at reservoir.

BOLIVAR—Pop. 2,636, privately owned, J. E. Hollingsworth, Mgr., tel. 1091, 80 acres, 1.8 mile WSW on Mo. 64 & 13. 2 turf strips: N-S 2500x200 and E-W 1300x200; Elev. 1100E; 40' poles N side field. Wind sleeve, runways marked, "Bolivar" on hanger, oil and 80 oct. gas available 24 hr., 60x100 hangar, tie-downs. Weather via radio or tel. from Springfield. Car available to town. Hotels in Bolivar. Points of interest: Municipal swimming pool, golf course, Dunnegan's Memorial Park and Southwest Baptist College. Fishing & quail hunting in season.

* * * *

BOONVILLE—Pop. 6100, privately owned, J. B. Mitchell and R. D. Patrick, operators, tel. 12F3, 100 acres, 1 mile N on U. S. 40. Field sod & cinder runways: E-W 1813x60 turf and NE-SW 2640x60 cinders; Elev. 602E; 30' power line on E. bdy. Wind sleeve, oil and 80 oct. gas, daylight hrs. only, 1 hangar, modern rest rooms. Weather information by phone from Columbia. Taxi. Hotel accommodations and cabins in city. Points of interest: Kemper Military Academy, Old Lyric Theatre.

* * * *

BOURBON—Pop. 360, privately owned, Bernard Von Hoffmann Farm, O. Wilkinson, caretaker, 2 miles SE of town, ½ mile SW of highway "N," 4 miles from Meramec River. 1 turf landing strip: ENE-WSW 2100x150. Plan for fueling facilities. Fishing and hunting in season.

BOWLING GREEN—Pop. 2,000, privately owned and operated, Guy W. Hicks, Mgr., 126 acres, 1.6 miles NW of City, 1/8 mile W U.S. 61. 4 turf landing strips: N-S 2450, E-W 1,000, NW-SE 1800, and NE-SW 1800; Elev. 882. 20' pole line on S edge of field; farm house & barn at SW corner. Wind sleeve, oil and 80 oct. gas, daylight hours, repair shop under construction, 1—50x50 hangar. Refreshments, office, modern rest rooms being constructed. Hotel accommodations and cabins in city.

* * * *

BRANSON—Pop. 1,011, Municipal, E. John Dean, Mgr., 99 acres, 4 mi. W on Mo. 80. 2 turf strips: N-S 2110x490 (Ext. planned) & E-W 1850x500; Elev. 1069ME. Wind sleeve, 50' airport circle, boundary markers. Plan for complete service. Hotels in town. Points of interest: Lake Taneycomo, White River, Shepherd of the Hills Country, School of the Ozarks, excellent fishing, home of float trips, resorts and hotels on Lake Taneycomo.

* * * *

BROOKFIELD—Pop. 6,100, "Bailey's Airpark," privately owned, R. H. Davis, Mgr., 120 acres, 2½ miles SW of City. 3 turf strips: N-S 2640, E-W 2640, NW-SE 1800; Elev. 800. Wind sleeve, oil and 80 oct. gas. Hotel and tourist cabins in town; golf course and swimming near by.

BUTLER—Pop. 2,958, privately owned, Grover Gilbert, owner, 80 acres, 2.8 miles N of courthouse on U. S. 71. 3 turf strips: N-S 2600x300, NE-SW 2650x300, & NW-SE 2300x300; Elev. 865E; Use with caution: Airport under construction—complete facilities planned. Expect to open about Jan. 1, 1947.

* * * *

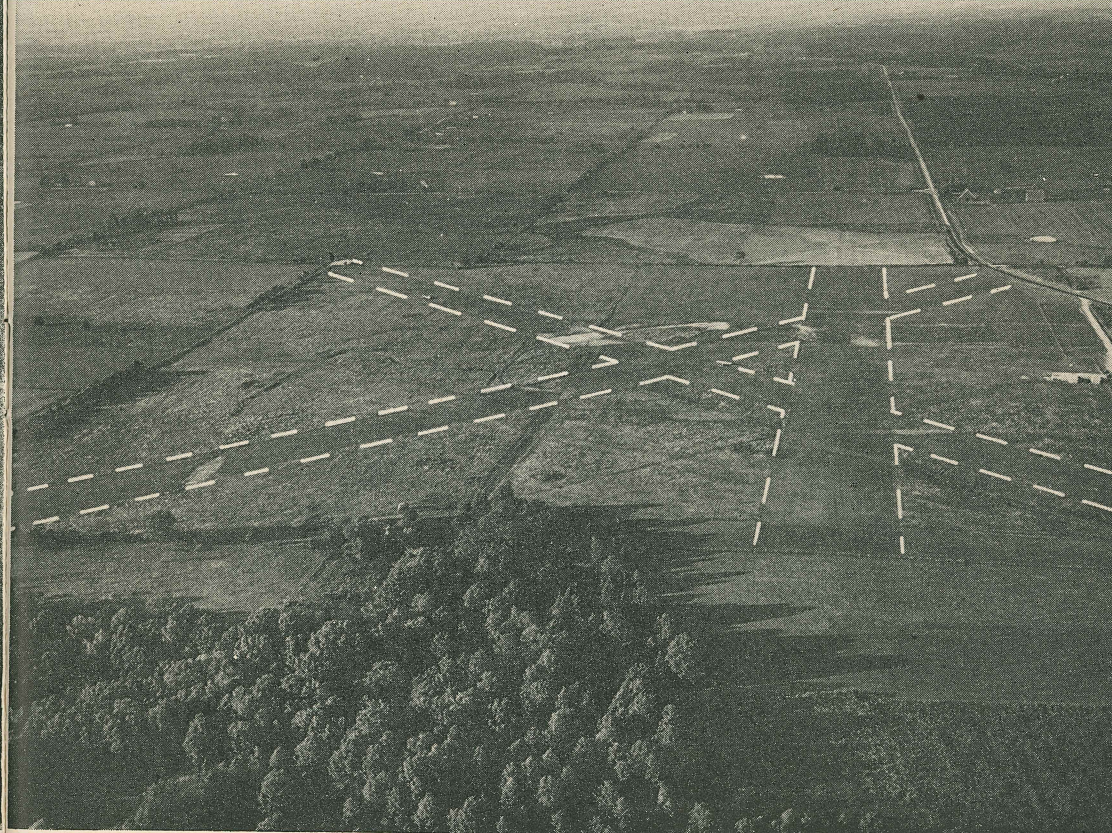
CABOOL—Pop. 1,069, privately owned, W. H. Petefish, Mgr., no tel., 1 mile SW on gravel road. 1 turf strip: SW-NE 1800x120; Elev. 1200. "Cabool" N. arrow, & 25' circle in chat identifies airport. Wind sleeve, TEE, markers, tie-downs, oil and 80 oct. gas, daylight hrs. Taxi. Hotel accommodations. Hunting and fishing, (Big Piney and Norfolk rivers start here).

* * * *

CAMERON—Pop. 3700, privately owned, H. E. Emery, Mgr., Tel. 16F13., 34 acres, 2 miles E U. S. 36. 3 turf strips: N-S 2100, NNW-SSE 2100, and E-W 1400; Elev. 1050. Wind sleeve, oil and 80 oct. gas, repair shop, 2 hangars, office, tie-downs. Hotel and cabins in city. Taxi or private car to City.

* * * *

CAMPBELL—Pop. 1,786, "Ramsey Field," privately owned, Clinton W. Ramsey, Mgr., 1.6 miles SW on U. S. 62 & Mo. 53. 1 turf strip: NE-SW 1800x300; Elev. 295. Wind sleeve, hangar, tie-downs, oil and 80 oct. gas available. Taxi & charter service. Hotels in town.

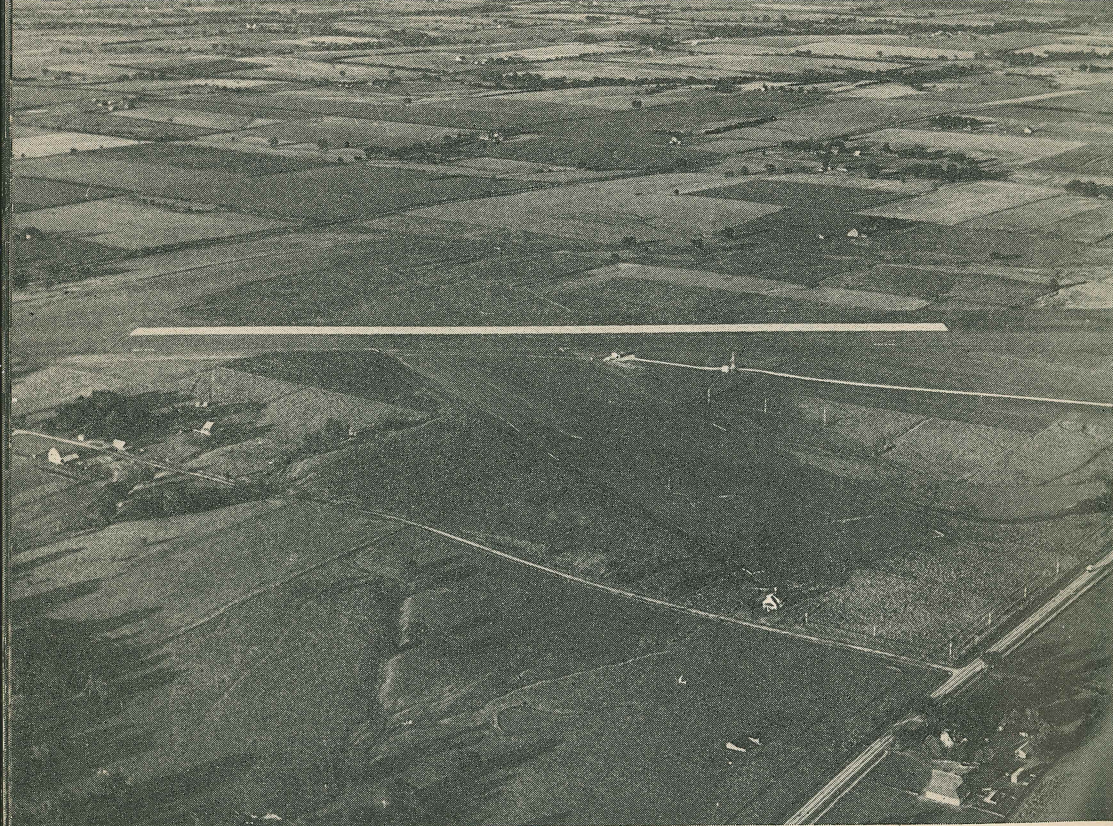


Witman

Witman

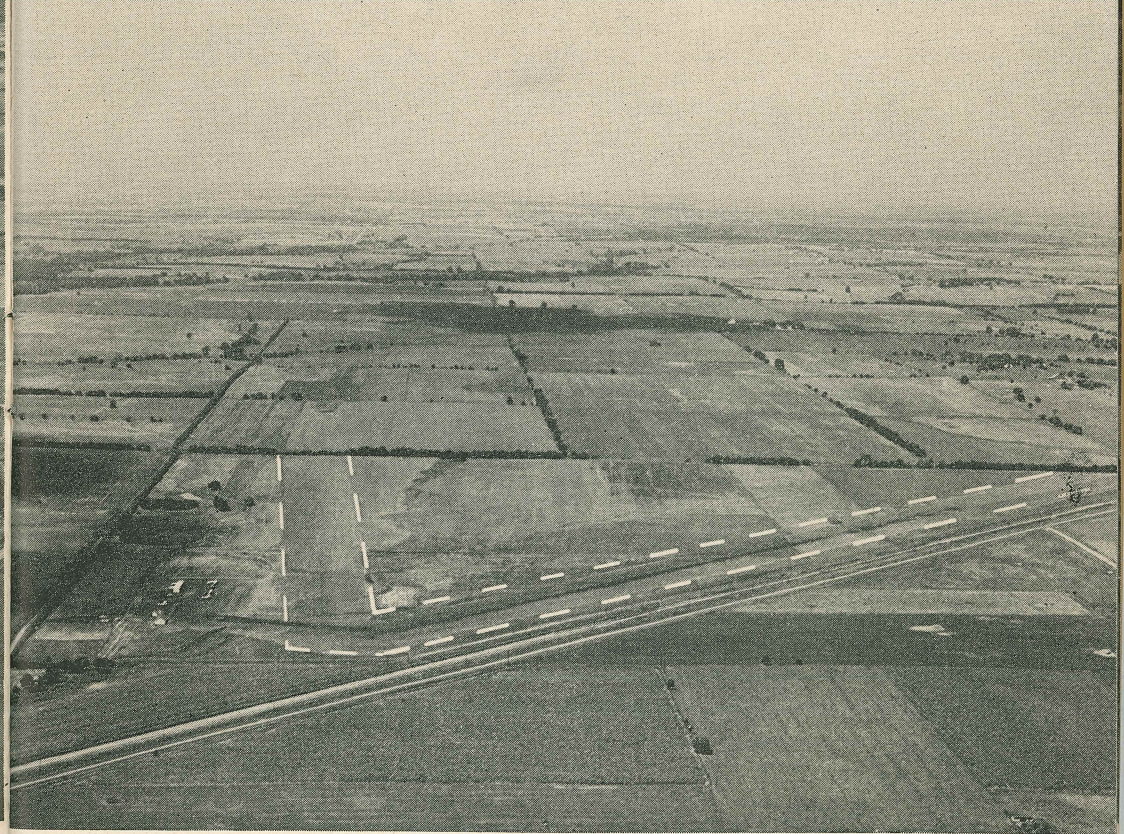
CARTHAGE—Pop. 10,585, "Myers Municipal Airport," J. D. Dalton, Mgr., tel. 3945, 160 acres on Alt. U.S. 71, S edge of town. 3 turf runways: N-S 2200x300, E-W 2300x300 and NE-SW 2800x300; Elev. 1007 ME; Pole line W and SW. Wind sleeve, TEE, oil and 80 oct. gas daylight hrs., A & E mechanic, average stock parts, shop, complete overhaul small planes, hangars, tie-downs, refreshments and lunchroom, modern rest rooms. Weather via Joplin by radio or telephone; portable runway lights available; charter service. Hotels in town and cabins close by. Point of interest: Municipal Park with 9-hole golf course and swimming pool.

CASSVILLE—Pop. 1,214, privately owned, C. M. Burton, operator, tel. 2252, 105 acres, 3.9 miles S on Missouri 112. 3 turf strips: NW-SE 2300x130, NE-SW 2300x130 and N-S 1800x180; Elev. 1375E. Wind sleeve, field markers, oil and 80 oct. gas on call, hangars, tie-downs. Taxi. Hotel and cabin accommodations. Fishing and hunting in season; Roaring River State Park 4 miles away. Plan for manager and complete service.



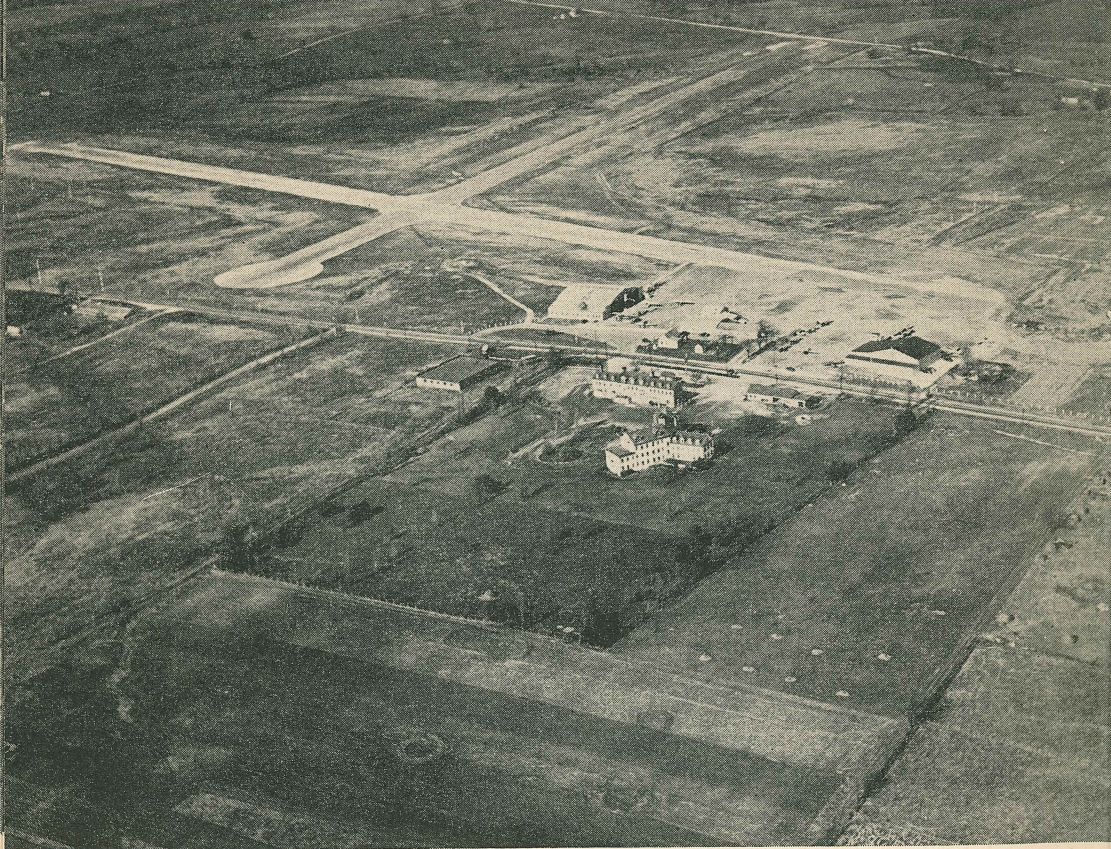
Massie—DORAD

CHILLICOTHE—Pop. 8100, Municipal (No Mgr.) City Airboard, Approx. 120 acres, 2 miles E on U. S. Rt. 36, concrete runway: NW-SE 2500x100 with turf ext. 2 turf strips: NE-SW 3650x500, E-W2300x500; Elev. 68ME; Pole line on S side, marked and lighted. CAA Intermediate field; Wind sleeve, rotating beacon, boundary lights. No service on field at present. CAA weather station on field. Hotels and cabins in City. Points of interest: Chillicothe Business College, City Park.



Massie—DORAD

CLINTON—Pop. 6,041, privately owned, Richard Graham, Mgr., tel. 408, 136 acres, 2.3 miles NE on Missouri 52. 2 landing strips: N-S 2600x200 and NE-SW 3700x200; Elev. 800E; Poles SW, S, E, and N. Wind sleeve, field markers, oil and 80 and 91 oct. gas, daylight hrs., hangars, tie-downs, modern rest rooms, refreshments. Weather tel. to K. C. Charter service. Hotel accommodations in town. Swimming, fishing and hunting along Grand River.



Massie—DORAD

COLUMBIA—Pop. 20,000, Municipal, Robert Selfridge, Mgr., phone 7802, 185 acres, NW City limits. 3 strips: N-S 3100x100 macadam; E-W 3300x100 macadam; NE-SW 1600 sod; Elev. 769; Pole line on W; marked and lighted. "Columbia" on hangar, field lighted, rotating beacon, wind sleeve, TEE, oil and gas all hrs., repair shop, hangars, tie-down, modern rest room, office, restaurants, U. S. Weather Station on field. Hotels and tourist cabins in city. Taxi, private car, city bus line. Points of interest: University of Missouri, Stephens College and Christian College.

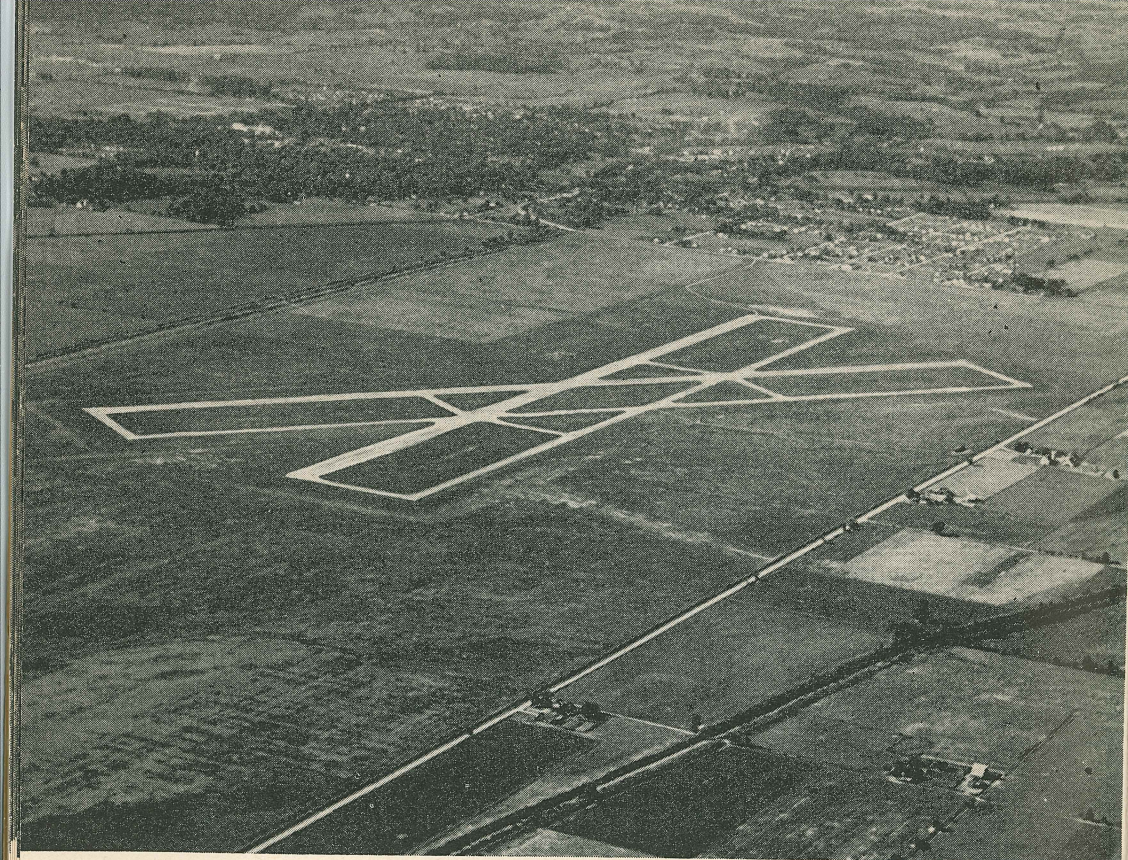
COOTER—Pop. 466, 1.5 miles SE on Missouri "E." 2 asphalt runways: N-S and NW-SE 4000x100, with parallel 50' taxi strips; Elev. 260. No service. (Formerly AAF Auxiliary). CAUTION—livestock on Field.

* * * *

CRAIG—Pop. 718, privately owned, Tom Ward, Mgr., tel. 3421, 80 acres. 2 turf landing strips: N-S 2300x300, E-W 2300x300; Elev. 830. Wind sleeve field markers, oil and 73 and 80 oct. gas, hangar, shop, tie-down facilities. CAUTION—field under construction—expect completion spring 1947. Hunting and fishing.

* * * *

DE SOTO—Pop. 5,121, privately owned, John R. Cole, Mgr., no tel., 50 acres on gravel rd. 9 miles S on direct line to Bonne Terre. 2 turf landing strips: N-S 1500x200 and E-W 3000x200; Elev. 875E. Wind sleeve, oil and 80 oct. gas 24 hrs, tie-downs, 60x60 hangar with aluminum roof marks field. Car available to town. Hotel accommodations in Bonne Terre or DeSoto. Hunting and fishing in season.



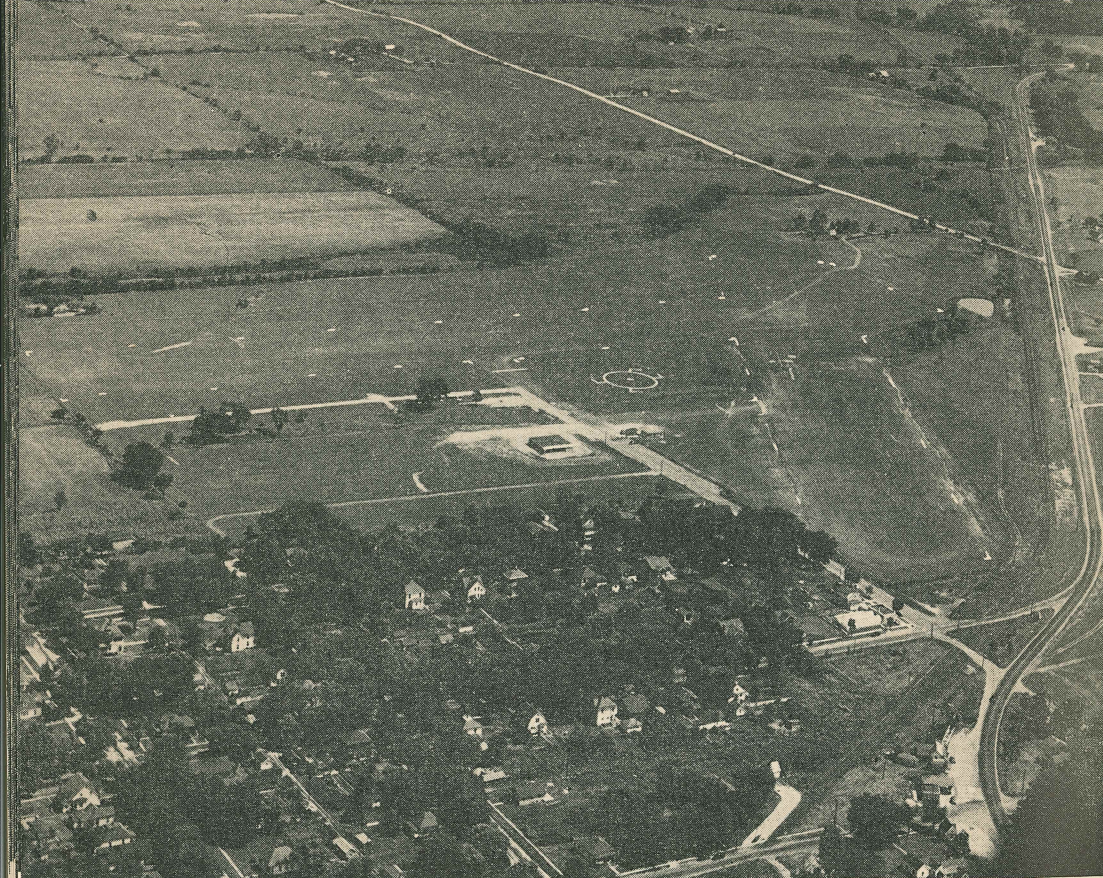
Hammond and Irwin

DEXTER—Pop. 3,108, formerly AAF Auxiliary Field for Malden, 1.4 miles SSE on U. S. 60. 2 asphalt runways: N-S and NE-SW 4500x100 with parallel 50' taxi strips; Elev. 315. No service. **CAUTION:** livestock may be on field.

DEXTER—Pop. 3,108, "Wards Airport," privately owned, L. R. Ward, Mgr., no tel., 60 acres on Missouri 25, 3 miles N Bernie and 5 miles S Dexter 2 turf strips: N-S 2600x300 and NE-SW 2100x300; Elev. 300E; power line on E side. Wind sleeve, field markers, mech. service, oil and 80 oct. gas available 24 hrs., hangars, tie-downs, refreshments; car available to town. Weather via tel. Malden or Advance. Operator planning lunchroom. Fishing and hunting in season.

* * * *

DIAMOND—Pop. 486, privately owned, Phillip L. Kelley, Mgr., tel. 111, 50 acres, 2.1 miles SSW on Alt. U. S. 71. 2 turf strips: NE-SW 1900x50 and NW-SE 2150x50; Elev. 1150E; pole line E and N. Wind sleeve, oil and 80 oct. gas—daylight hrs., 60x44 hangar, tie-downs. Weather via tel. to Joplin; hourly bus to town. Hotel accommodations in Neosho. Hunting and fishing in season.



Massie—DORAD

ELDON—Pop. 2,590, “Nation’s Model Airpark,” Municipal, Ellis H. Caraway, Mgr., tel. 99, 75 acres on U. S. 54, NE edge town. 2 turf strips: E-W 2000x300 and NNE-SSW 2300x300; Elev. 919. Wind sleeve, TEE, field markers, oil and 80 and 91 oct. gas 24 hr., tie-downs, square type unit hangar, refreshments, modern rest rooms. Charter services. Non-standard traffic pattern indicated by barbs on 100’ airport circle; two-way radio station—call letters KAGG. A prefabricated administration building. Experimental mobile service unit. Taxi. Hotel and cabin accommodations. Gateway to the Lake of the Ozarks.



FAYETTE

Massie—DORAD

FAYETTE—Pop. 2,650, privately owned, K. D. Critchfield, Mgr., tel. 14-F-3, 17 miles S of city on county gravel road, M-K-T R.R. on west. 2 turf strips: NNE-SSW 2800x100 and NW-SE 2400x100. Wind cone, TEE, oil and 80 oct. gas—daylight hrs, office, tie-downs, hangar under construction. Taxi and private car. Hotel in City. Point of interest—Central College.

* * * *

FARMINGTON—Pop. 3,738, privately owned, F. J. Auchter, Mgr., tel. 131, on U. S. 61 and 67 E edge city. 3 turf strips: N-S 2200x300, NW-SE 3500x300, and E-W 2600x300. Wind sleeve, field markers, oil and 80 oct. gas—daylight hrs., hangars, tie-downs, refreshments, meals, A & E mechanic, repair shop, limited repair parts. Complete overhaul on small craft, charter service. Taxi and airport car. Hotel accommodations in city. Fishing and hunting.

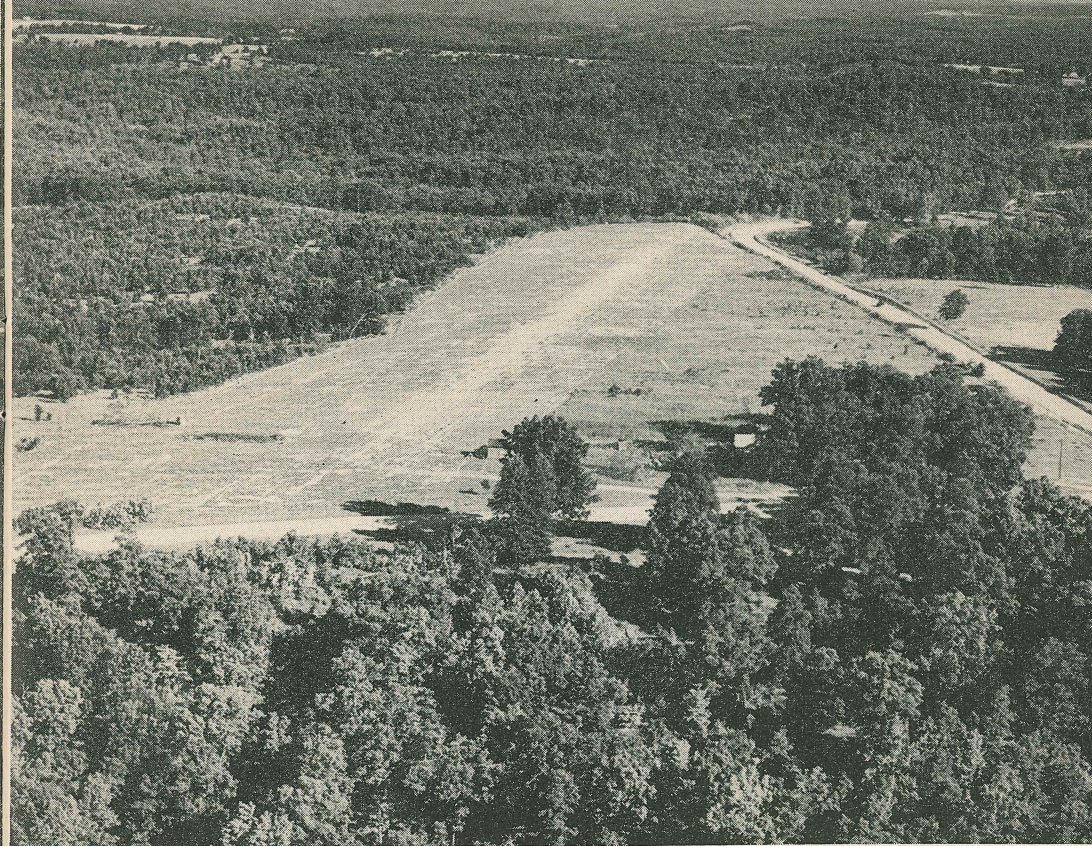
FESTUS—Pop. 4,620, "Lucas Airport," privately owned, John D. Musgraves, Mgr., tel. 2213, 125 acres 1.7 miles S on E side Missouri 25. 2 turf strips: N-S 1400 and E-W 2500; Elev. 425E. Wind sleeve, field markers, hangar, tie-downs, oil and 80 oct. gas, daylight hrs., refreshments (summer months), charter service. Weather via tel. to Lambert Field. NOTE: Right Traffic Pattern. Taxi. Hotel accommodations in Festus or Crystal City. Kennett Castle 1 mile away. Fishing in Joachin Creek on Airport and hunting in season. Old shot tower site at Herculaneum.

* * * *

FREDERICKTOWN—Pop. 3,414, privately owned, B. L. Warren, Mgr., No tel., 65 acres on route "A", 1 mile off U. S. 67, approximately 6 miles S of city. 2 turf strips: NE-SW 2000x400 and E-W 1500x400; Elev. 1050E. Wind sleeve, tie-downs, refreshments, oil and 80 oct. gas—daylight hrs. Taxi and airport car. No other facilities. Hotel accommodations in city.

* * * *

FT. LEONARD WOOD FIELD—U. S. Army, temp. inactive. 2 asphalt runways: SW-NE 4500x150 and NW-SE 4500x150; Elev. 1100. Wind sleeve, control tower, tie-downs. Closed to all aircraft with gross weight in excess of 8000 lbs.



GAINESVILLE

Massie—DORAD

GAINESVILLE—Pop. 255, privately owned, 2.5 miles E at junct. of Mo. 80 and "E." 1 turf strip: N-S 1800x200; Elev. 1000 E. Wind sleeve, tie-downs, oil and gas available, refreshments. Taxi. Hotel in town. Hunting and fishing in season.

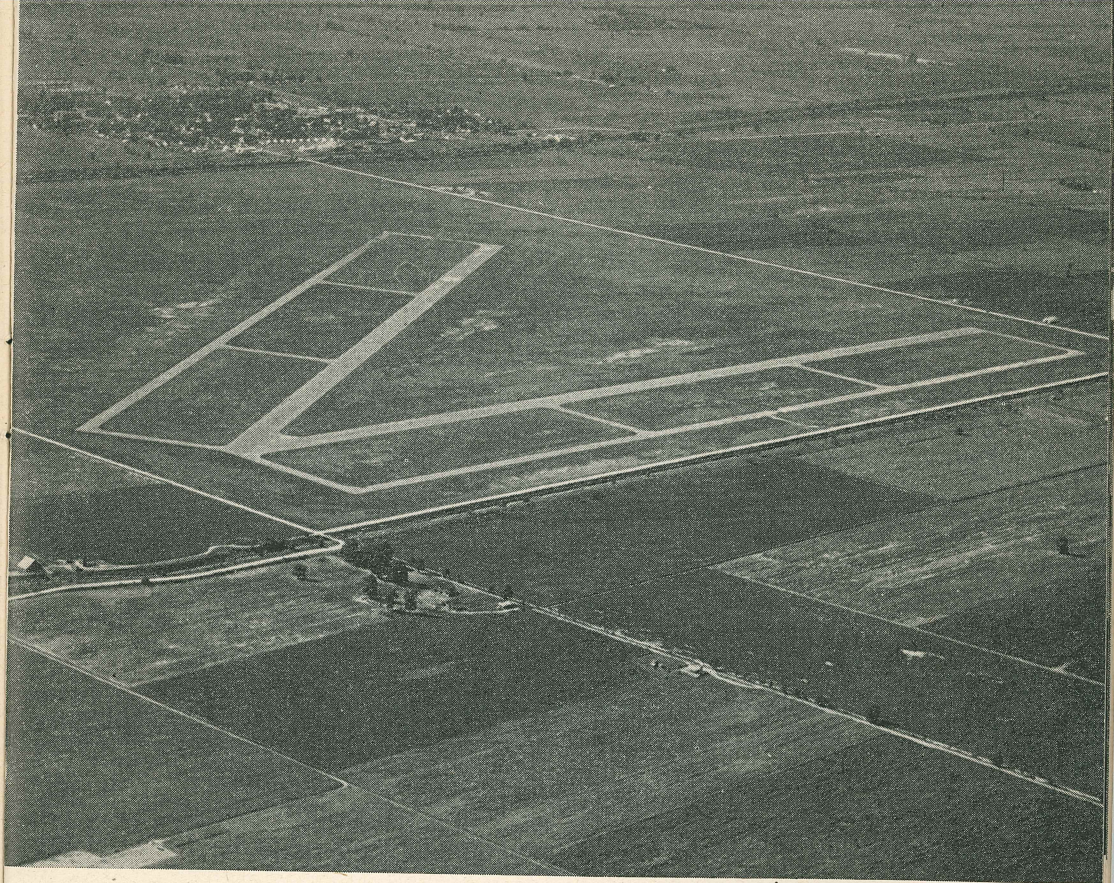
[* * * *

FULTON—Pop. 8400, Municipal, Noel Cessna, Mgr., Tel. 1-F-2, 320 acres, 3 miles SW county road. 4 strips, sod and gravel: N-S 2000; NW-SE 2300; NE-SW 2600; E-W 1900; Elev. 875; transmission power line E of field. Field markers, wind sleeve, TEE, oil and 80 oct. gas, daylight hrs., repair shop, hangar, office, modern rest rooms, tie-downs, weather information phone Columbia. Hotels and tourist homes in city. Taxi and private car. Points of interest: Westminster College, William Woods College, State School for the Deaf, State Hospital No. 1.

GALT—Pop. 525, privately owned, M. F. Moore, Mgr., 100 acres 3½ miles W on Missouri Highway 6. 3 turf landing strips: NE-SW 2400, N-S 2150, and NW-SE 2300; Elev. 937. Oil and 80 oct. gas. CAUTION—field under construction. Expect completion in early 1947.

* * * *

GARDEN CITY—Pop. 599, "Wright Field," privately owned, L. Dail Wright, Mgr., tel. 16, 60 acres 1.4 miles NNW on Missouri 35. 2 turf strips: N-S 2100x150 and NW-SE 2600x150; Elev. 880E; pole line on S. Wind sleeve, 40x28 hangar, tie-downs, oil and 80 oct. gas 24 hrs. Fishing & quail hunting in season.



GIDEON

Hammond and Irwin

GIDEON—Pop. 1,606, formerly auxiliary field for Malden AAF Basic Flight School, 1 mile SE of town. 2 asphalt runways: N-S and NNW-SSE 4500x100 with parallel 50' taxi strips; Elev. 268. No service. CAUTION: Livestock may be on field.

* * * *

GRANT CITY—Pop. 1225, privately owned, G. P. Edwards, Operator, 13 acres 1.2 miles E on Mo. 46. 1 turf strip 1700x300; Elev. 920E; hill to north. Hangar, tie-down, oil and 80 oct. gas, daylight hrs., wind sleeve. Taxi. Hotel in city.



Massie—DORAD

GRAVOIS MILLS—Pop. 100, "Mel Adkins Camp," privately owned, Mel Adkins, Mgr., tel. Versailles 2213, on Lake of the Ozarks, 6 miles S of town and E of Missouri 5. 1 turf strip: N-S 1900x250; (slopes to S.); Elev. 950E; CAUTION: Trees on all sides. Wind sleeve, field markers, tie-downs, oil and 80 oct. gas, 24 hrs.⁵ Airport car. Cabins available; boats, motors, and riding horses for rent. Hunting and fishing in season.

HANNIBAL—Pop. 21,000, privately owned, Elmer Long, Mgr., Tel. 5018-F-11, 95 acres 4.3 miles WNW of city on county road. 4 turf strips: N-S 2460x500, E-W 2000x500, NW-SE 2800x500, and NE-SW 2000x500; Elev. 735 ME. Boundary markers, 1 spot floodlight, wind cone, TEE, oil and 80 oct. gas, daylight hrs., repairs, hangars, tie-down, office, waiting room, modern rest rooms. Hotels and tourist homes and cabins in city. Taxi and private car. Points of interest: Hannibal La Grange College, Mark Twain Memorial and Park.

* * * *

HARRISONVILLE—Pop. 2,322, privately owned, Joseph E. Rogers, Mgr., tel. 25X3, 80 acres 2.1 miles W on Missouri 2. 3 turf strips: N-S 1800x300, NE-SW 2100x300 and E-W 1500x300; Elev. 910E. Wind sleeve, boundary markers, tie-downs, refreshments (in summer), oil and 73 oct. gas, 24 hrs. Weather via radio and tel. to K. C. Taxi. Hotel and cabin accommodations in city. Hunting and fishing in season—Grand River, Pleasant Hill Reservoir.

* * * *

HOUSTON—Pop. 320, "King Airport," privately owned, H. R. Rosey, Mgr., tel. 47, 70 acres 0.8 mile WNW at edge of city. 2 turf strips: N-S 1675 and SW-NE 1750x300, (Use with caution); Poles S side; Elev. 1180E. Wind sleeve, tie-downs, oil and 80 oct. gas, daylight hours. Weather tel. to Springfield. Charter service. Taxi. Hotel accommodations in town. Hunting and fishing in season.

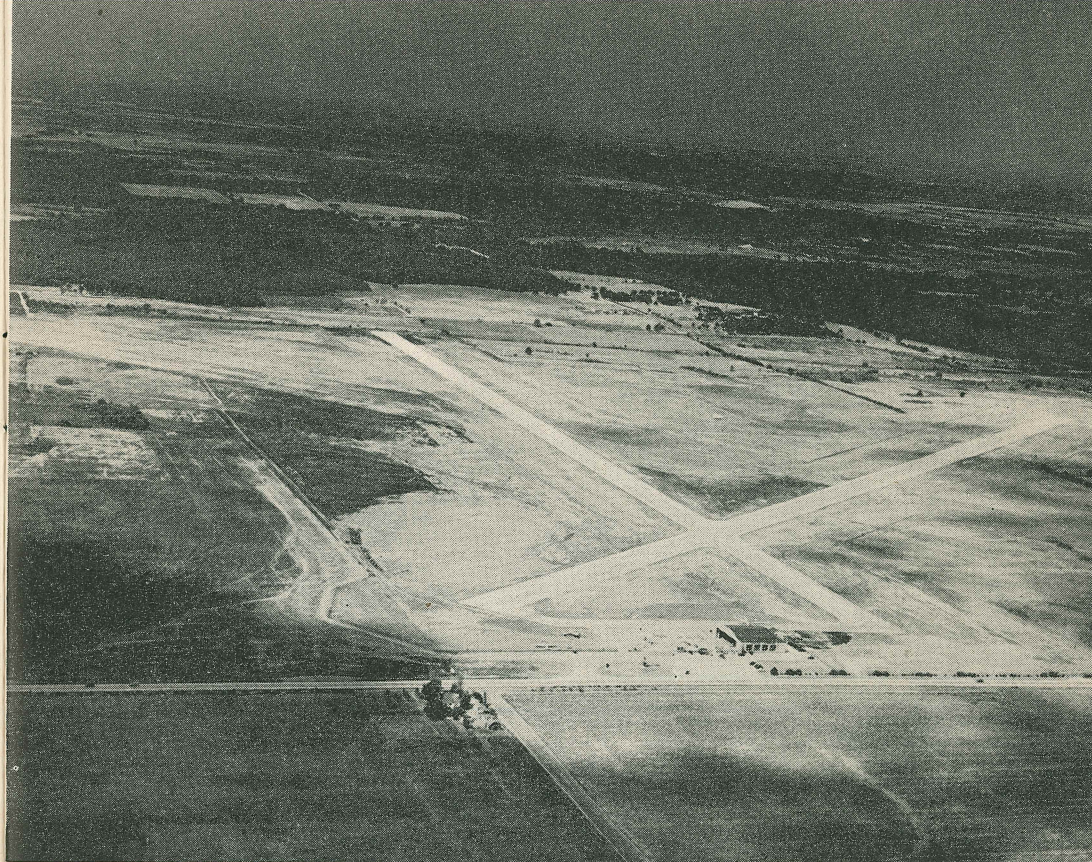
IBERIA—Pop. 486, "Eads Airport," privately owned, J. A. Eads, Mgr., tel. 7F25, 140 acres 1.25 miles W on W side Missouri 17. 4 turf strips: N-S 1900, N-S 2400, E-W 3100 and NW-SE 3000; Elev. 960ME. Wind sleeve, field markers, checkered barn roof marks field, oil and 80 and 91 oct. gas, 24 hrs. Flood lights on hangar on call. Weather via tel. or radio to Vichy. Refreshments, minor repair service. Taxi. Hunting and fishing in season. Point of interest: "Smith" College.

* * * *

INDEPENDENCE—Pop. 16,000, R. C. O'Neil and G. H. Morris, Mgrs., tel. Indep. 288k2, 3½ miles ESE of City. 2 turf strips: N-S 2500x300 and NE-SW 3500x300; Elev. 825. Field markers, wind sleeve, TEE, oil and 80 and 91 oct. gas, charter service, repair shop, hangar, and tie-downs. Soft drinks. Taxi and airport bus. Hotels and tourist cabins in city.

* * * *

JEFFERSON CITY—Pop. 24,268, "Jefferson Airfield," privately owned Raymond Brummet, Mgr., tel. 2069 Blue, 2.5 miles N city between U. S. 54 and 63. 3 turf strips: N-S 1800x100, E-W 2250x100 and NE-SW 3050x100, (Use strips only); Elev. 550. Wind sleeve, TEE, oil and 80 oct. gas, daylight hrs., A & E mechanic, limited repair parts, complete overhaul small craft, tie-downs, charter service, refreshments. Weather via radio and tel. to Columbia; taxi and airport car. Hotels & cabins in city. Point of interest: State Capitol.



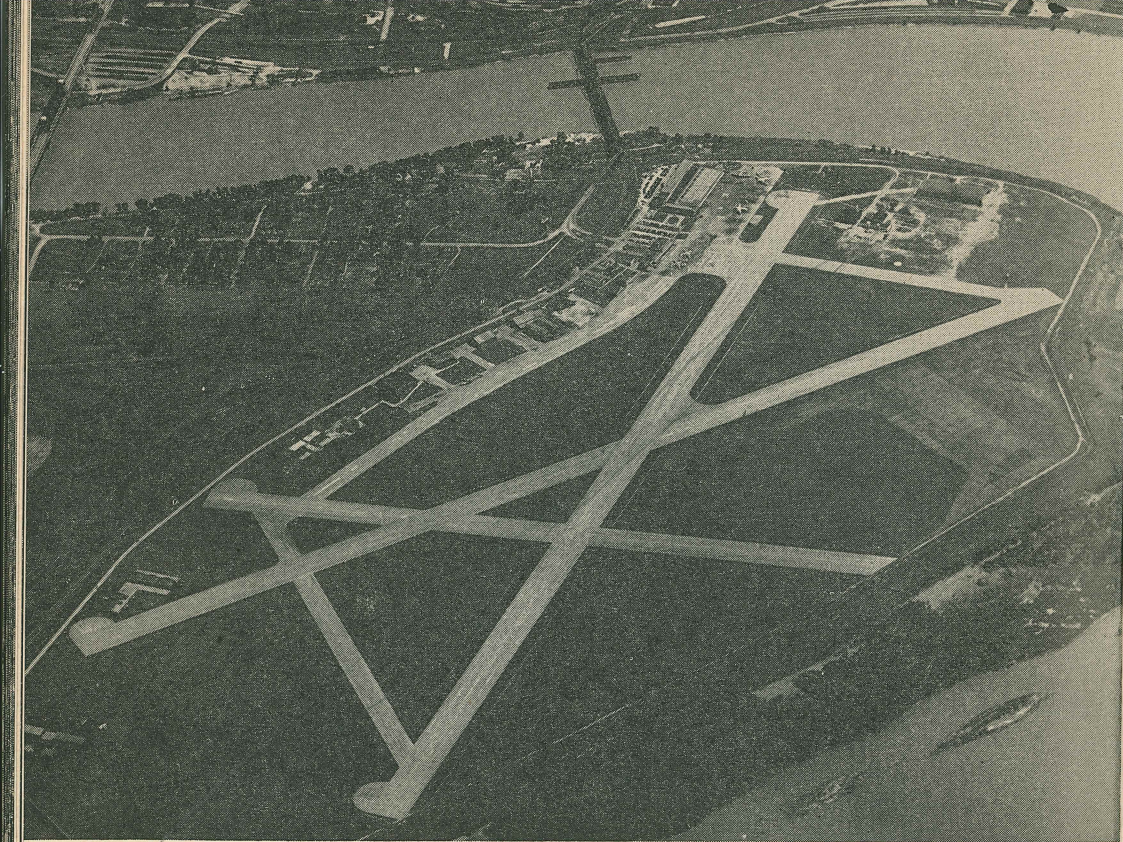
JOPLIN MUNICIPAL

Massie—DORAD

JOPLIN—Pop. 37,144, Municipal, Ralph Nolan, Mgr., tel. 207, 488 acres 4½ miles NNE on U. S. 66. 2 paved runways: N-S 4250x100 and NE-SW 4250x100; turf strip NW-SE 4250x500; sod surface each side of runways available for small plane landings; Elev. 981. "Joplin Airport" on side of hangar, wind sleeve, tetrahedron, day and night field markers, oil and 80 and 91 oct. gas, 24 hrs., A & E mechanic, limited repair parts, complete overhaul small craft, hangar, tie-downs, refreshment and lunchroom service. Beacon and radio—call letters JH; CAA weather sta. at airport, floodlights, both ends all runways. On Civil Airway 13 Blue (K. C. to Houston, Texas). American Airlines and Mid-Continent airline service, charter service. Taxi and hourly bus. Hunting and fishing in season. Hotel accommodations in city.

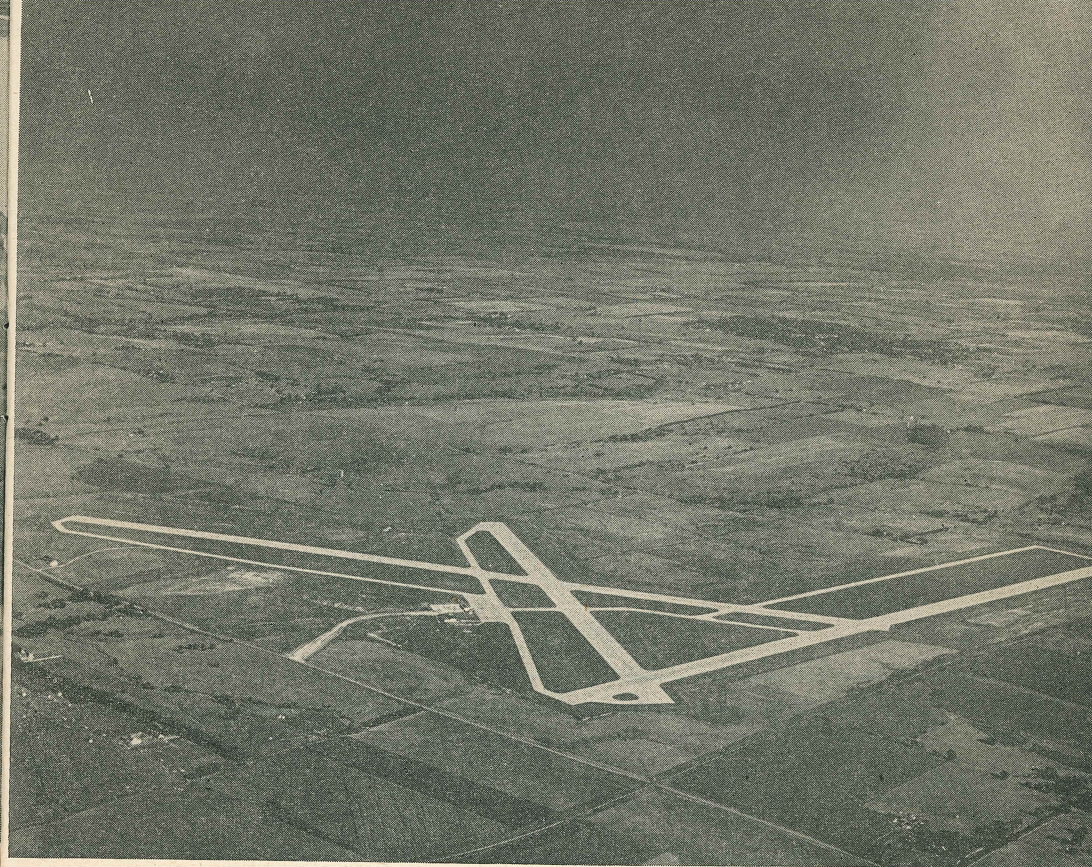
* * * *

JOPLIN—Pop. 37,144, privately owned, H. G. Harper, Mgr., 160 acres 2.7 miles W on U. S. 66. 4 turf strips: N-S 2570x200, E-W 2610x200, NE-SW 3026x200 and NW-SE 3026x200; Elev. 990E. Chat strip field markers, 102x120 storage hangar and 72x80 shop under construction. Complete facilities planned—expect to open Jan. 1, 1947. Hotels in City and cabins close by. Hunting and fishing in season. Schifferdecker Municipal Park across road—provides 18-hole golf course, swimming pool, mineral museum, playgrounds, tennis, etc.



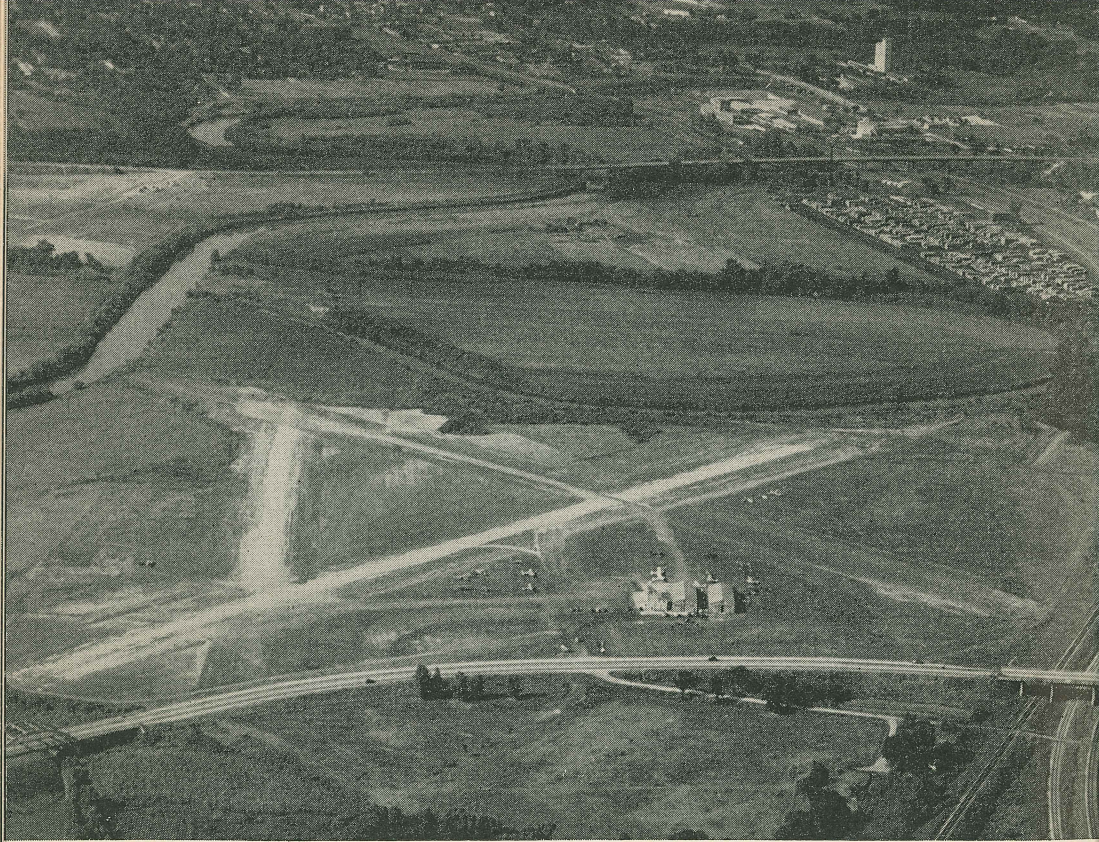
T. W. A.

KANSAS CITY—Pop. 440,000, Municipal, Chas. D. Daily, Mgr., tel. Norclay 4574, 687 acres, N edge of city. 3 concrete runways: N-S 5209x150, NE-SW 5049x150 and E-W 3000x150, entire field usable; Elev. 739. Wind sleeve, tetrahedron, rotating beacon, boundary and runway lights, control tower, hangars, repair shops, tie downs, oil and 73, 80, 91, and 100 oct. gas.—24 hrs. Restaurants, terminal offices, U. S. Weather Bureau Station. Airline service by T.W.A., Braniff, Mid-Continent, and Continental. Taxi and city bus lines.



Massie—DORAD

KANSAS CITY—Pop 440,000, "Grandview," Chas. D. Daily, Mgr., 962 acres, 16.5 mi. S, 1 mi. W of U. S. 71. 3 concrete runways: N-S 5500x150, NE-SW 5500x150 and NW-SE 4000x150; Elev. 1071. Wind sleeve, tetrahedron, rotating beacon, runways lighted—flush type. Used as auxiliary by airlines and military.



Massie—DORAD

KANSAS CITY—Pop. 440,000, "Heart of America," privately owned, C. H. McMillan, Mgr., tel. Linwood 1894, 110 acres on U. S. 40 at E city limits; borders Blue River. 3 turf and chat strips: N-S 1700x300; NE-SW 2250x300; NW-SE 2025x150; Elev. 742. Obstructions—use with caution. Wind sleeve, hangars, repair shop, tie-downs, restaurant, office, modern rest rooms, oil and 80 oct. gas. Weather information phone Municipal Airport. Access to city by city bus, taxi, private car. Operation during daylight hrs. only.



Massie—DORAD

KANSAS CITY—Pop. 440,000, "Ong Airport," privately owned, Wm. A. Ong, Owner and Mgr., tel. Republic 1123, 157 acres on U. S. 50, 9 miles SE of K.C. 3 turf strips: NS 2400, SE-NW 2200, and SW-NW 2600; Elev. 1050. Oil and 73 and 80 oct. gas, repair shop, hangars, tie-downs, lunch room, refreshments, modern rest rooms. Car and bus line available to city. Weather by tel. from Municipal Airport. CAUTION—obstructions; use strips only.

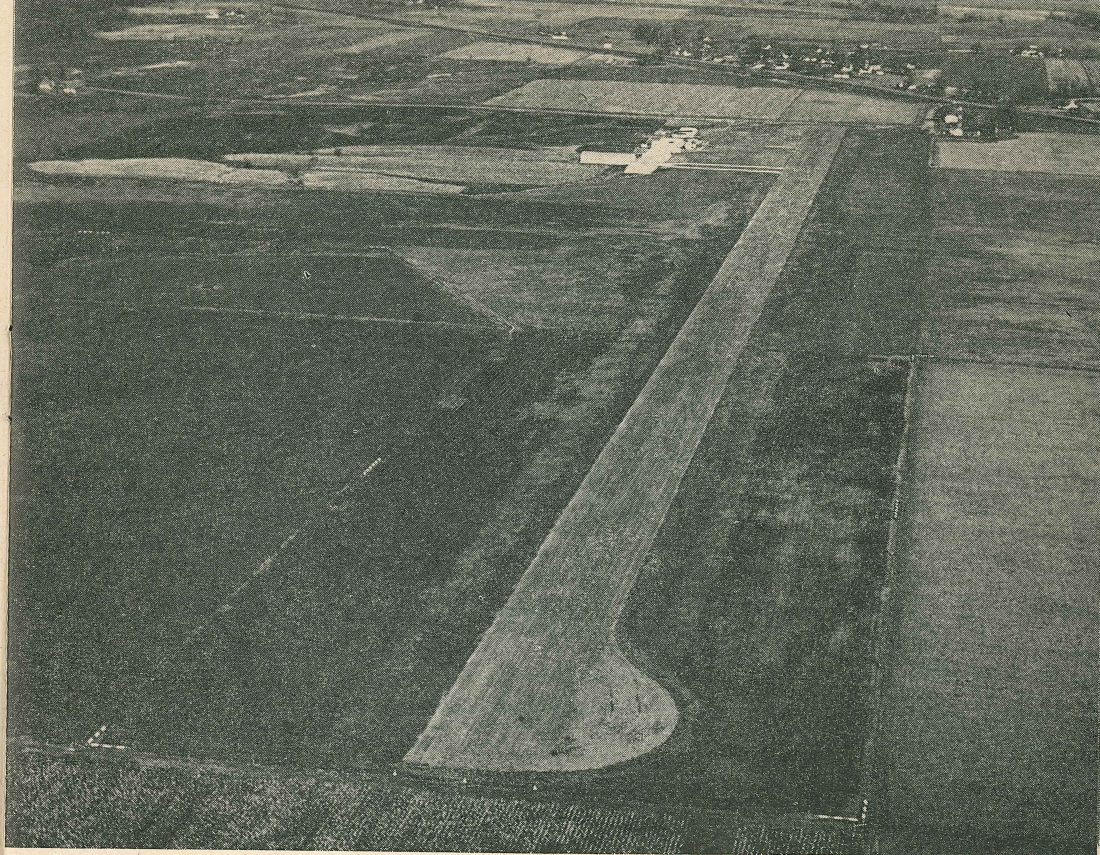
KENNETT—Pop. 6,335, "Sexton Airport," privately owned, Oscar D. Foster, Mgr., tel. 2441, 146 acres 3.5 miles SW on Missouri 25. 3 turf strips: N-S 2400x300, E-W 2600x300, SW-NE 2400x300; Elev. 263. Wind sleeve, field markers, oil and 80 oct. gas, daylight hrs., mechanic service, limited repair parts, hangars, tie-downs, refreshments, modern rest rooms. Taxi. Hotels in city. Hunting and fishing in season.

* * * *

KENNETT—Pop. 6,335, "American Legion Airport," privately owned, W. B. Anthony, caretaker, tel. 59, 80 acres 1.3 miles E on Missouri 84 and 25. 3 turf strips: N-S 2600x300, E-W 1220x300 and NNE-SSW 2000x300 (Not maintained—use with caution); Elev. 260ME; 30' pole line and smokestack to N. Refreshments, lunchroom. Taxi. Cabins and Hotels in city; American Legion club-house on airport. Golf course adjoins. Hunting and fishing in season. Plans for operator and additional service.

* * * *

KNOX CITY—Pop. 419, Neil Sawyer, Owner and Mgr., 3 miles NE of town. 2 turf strips: NW-SE 1900x50, NE-SW 1500x50; Elev. 765; use with caution. For private use but visitors are welcome. Gas and oil usually available.



Massie—DORAD

KIRKSVILLE—Pop. 10,500, Municipal, B. A. Clutter, Mgr., tel. 200, 104 acres, 7.4 miles SE city U. S. 63. 1 Asphalt runway N-S 3860x150. 3 turf strips: E-W 2600x300, NW-SE 1930x300, NE-SW 2060x300; Elev. 965; power line on E marked and lighted. Field markers, field lighted, rotating beacon, wind sleeve, TEE, oil, gas—daylight hrs., repair shop, 4 hangars, office, modern rest rooms, tie-downs. Operation during daylight hrs. only. CAA Weather Station on field; hotels and cabins in city; taxi and private car. Points of interest: Kirksville State Teachers College, Kirksville School of Osteopathy.

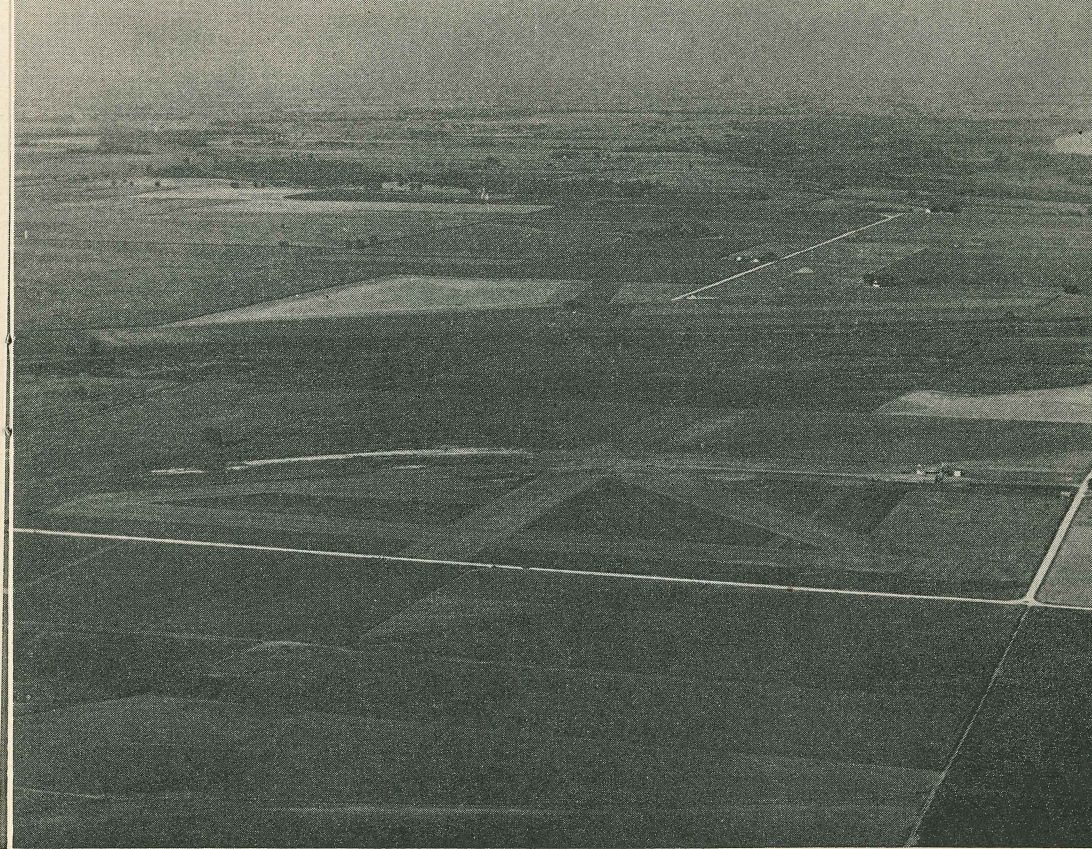
KIRKSVILLE—Pop. 10,500, "Kirksville Airpark," privately owned, Charley Santen, Mgr., 50 acres at SE edge of city. 1 turf landing strip 2600'; Elev. 927. Wind sleeve, oil and 80 oct. gas. (See Kirksville Municipal for points of interest.) CAUTION—Rough—Obstructions N&S.

* * * *

LEBANON—Pop. 5,025, Municipal (former CAA site 54-B), Wm. E. Standley, Mgr., tel. 41F4, 200 acres 2.5 mi. SSE on Mo. 5. 3 turf strips: N-S 2640x500, E-W 2575x500 & NE-SW 1900x500; Elev. 1380. Wind sleeve, 50' airport circle, rotating beacon, day & night field markers, oil and 80 oct. gas daylight hrs., A&E mechanic, limited stock parts, hangar, modern rest rooms, tie-downs, charter service, refreshments. Weather via tel. to Springfield. Taxi. Hotels in city. Hunting & fishing in season; Bennett Springs trout stream—19 miles W. on Highway 64.

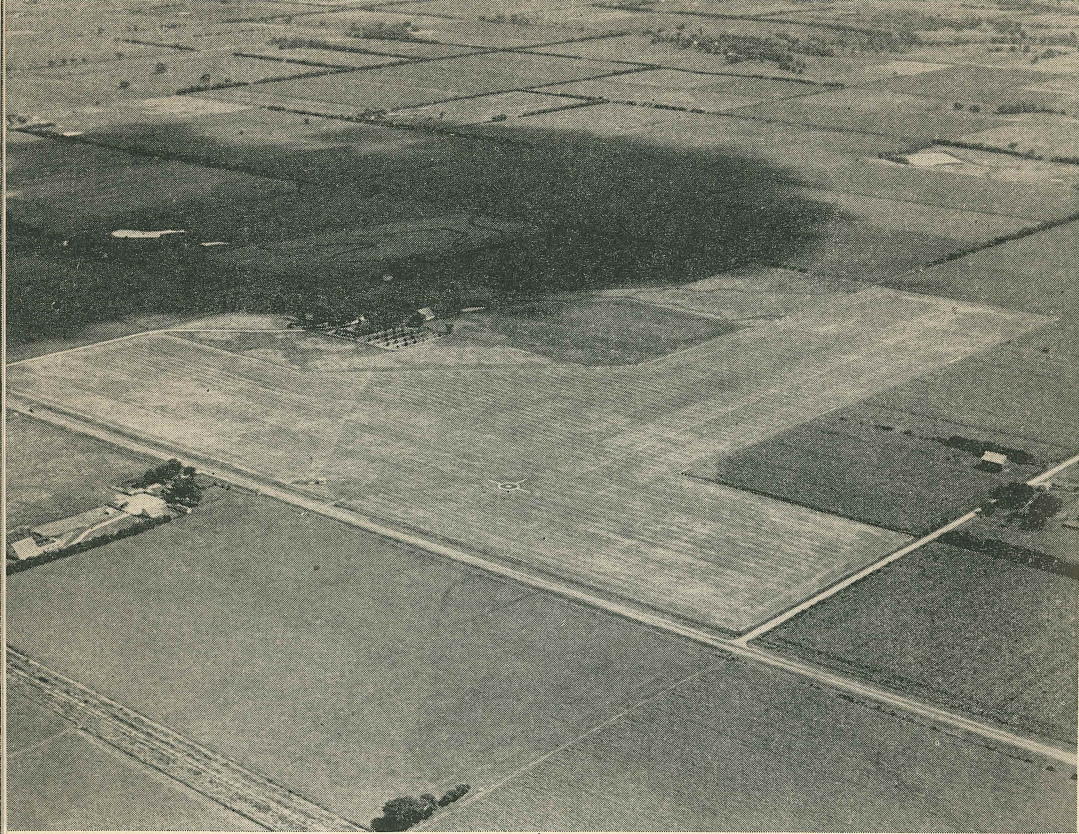
* * * *

LEONARD—Pop. 143, privately owned, Carl Gillespie, Mgr. 3½ miles W. 2 turf strips: NW-SE 1850x200, and NE-SW 1650x200; Elev. 800. Oil and 80 oct. gas, tie-downs. Fishing & quail hunting in season.



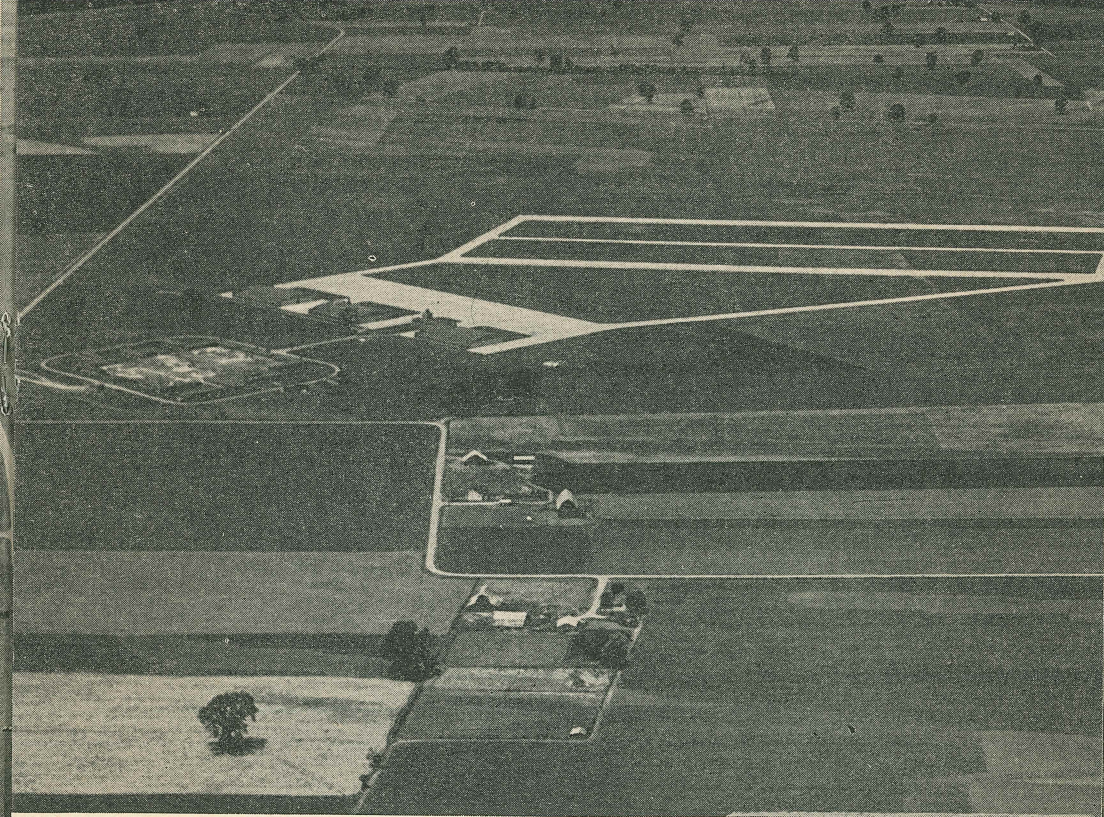
Massie—DORAD

LEXINGTON—Pop. 6,000, Municipal, E. R. Haines, Mgr., tel. Henrietta 271, 160 acres 3 miles NW of city on county road. 4 turf strips: N-S 2620, E-W 2460, SW-NE 2700, NW-SE 3120; Elev. 650; Pole line on S. Wind sleeve, TEE, Oil and gas—daylight hrs., repair shop, hangar, tie-downs, modern rest rooms. Taxi and private car. Hotels and cabins in city. Point of interest: Wentworth Military Academy.



Hammond and Irwin

LURAY—Pop. 202, CAA site 16 Intermediate field, Otho Fairbrother, caretaker, 74 acres 2 miles E on Mo. 4, N of Santa Fe R.R. 2 turf strips: N-S 2600x660, E-W 2616x660; Elev. 727. Wind sleeve, field lighted, boundary markers—day and night, obstructions lighted, rotating beacon. Farm buildings on N, W and E. No service.



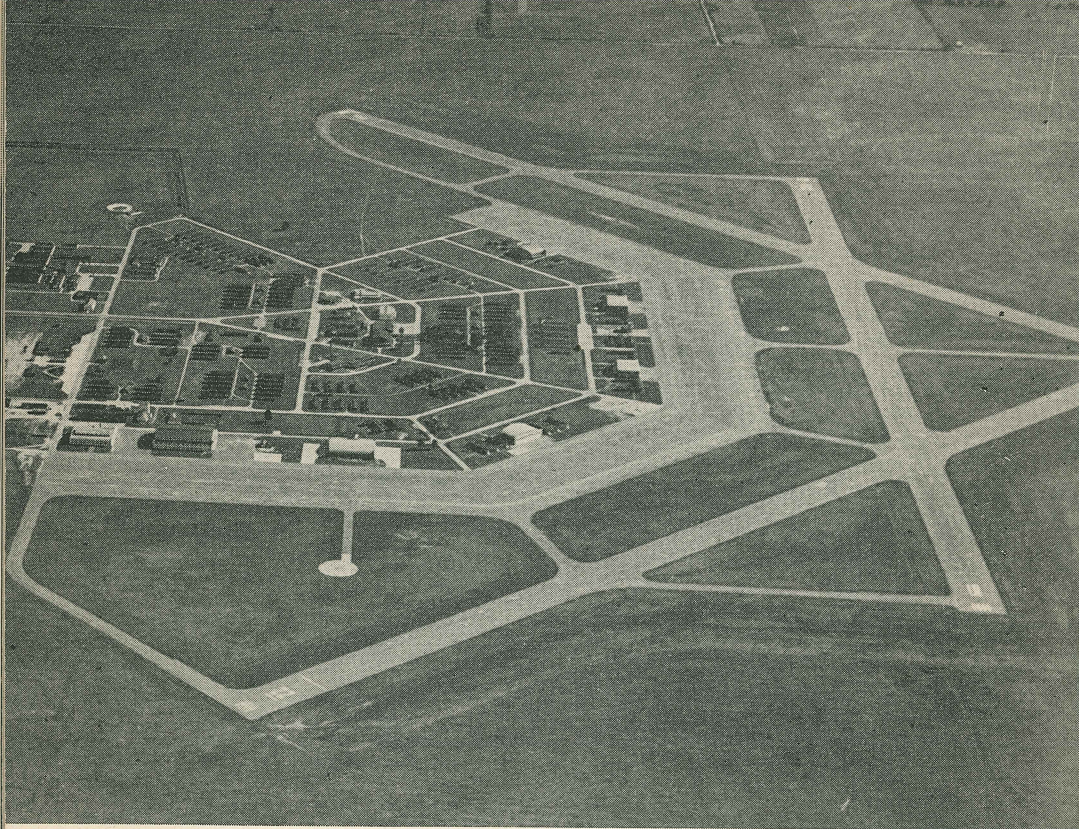
MCBRIDE

Massie—DORAD

MCBRIDE—Pop. 100, "Chester field," 168 acres 3.8 mi. NW on Mo. H. 2 parallel concrete runways: NNE-SSW 2000x100; Elev. 372ME. Formerly AAF Primary Flight School. Airport temp. inactive—cities of Chester and Perryville have requested WAA for an operational permit.

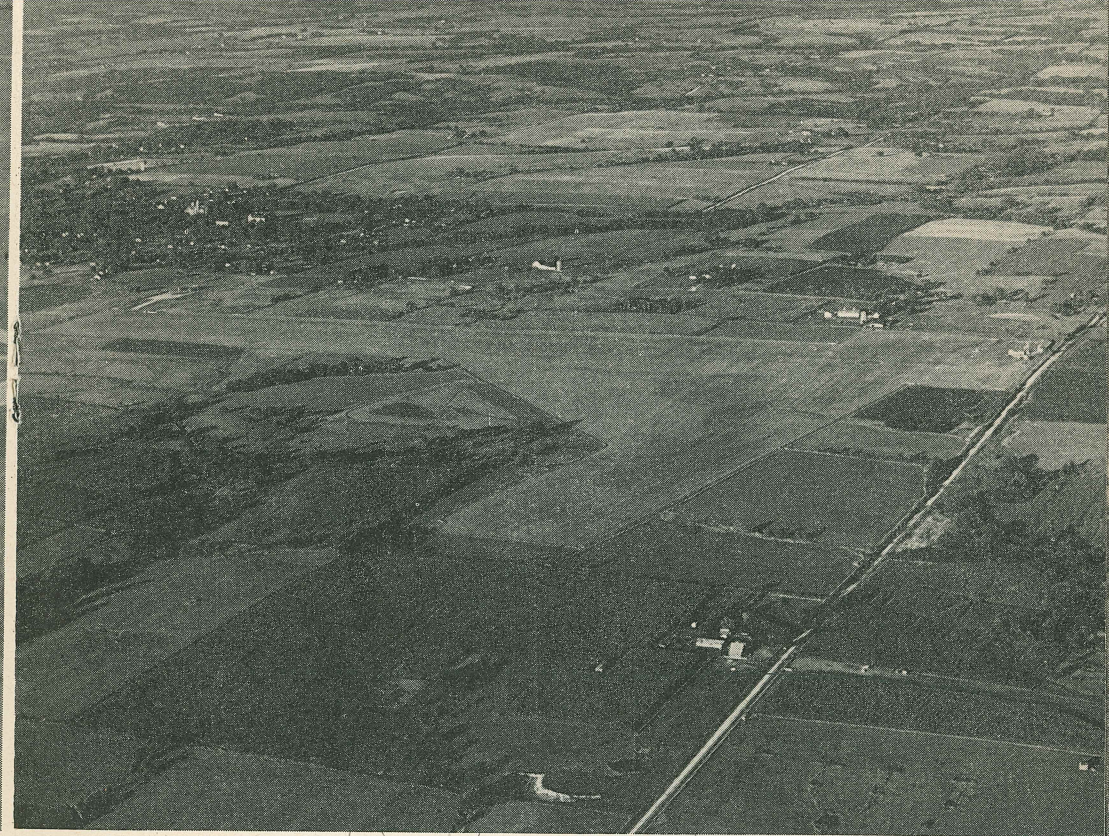
* * * *

MACON—Pop. 4200, Donald M. Stevenson, Mgr., 40 acres 2 miles S of Macon. 2 turf landing strips: N-S 1320x120, NE-SW 1450x100; Elev. 920E. Wind sleeve, oil and 80 oct. gas, tie-downs, T-Hangars. CAUTION: small field—NE-SW strip rough.



Hammond and Irwin

MALDEN



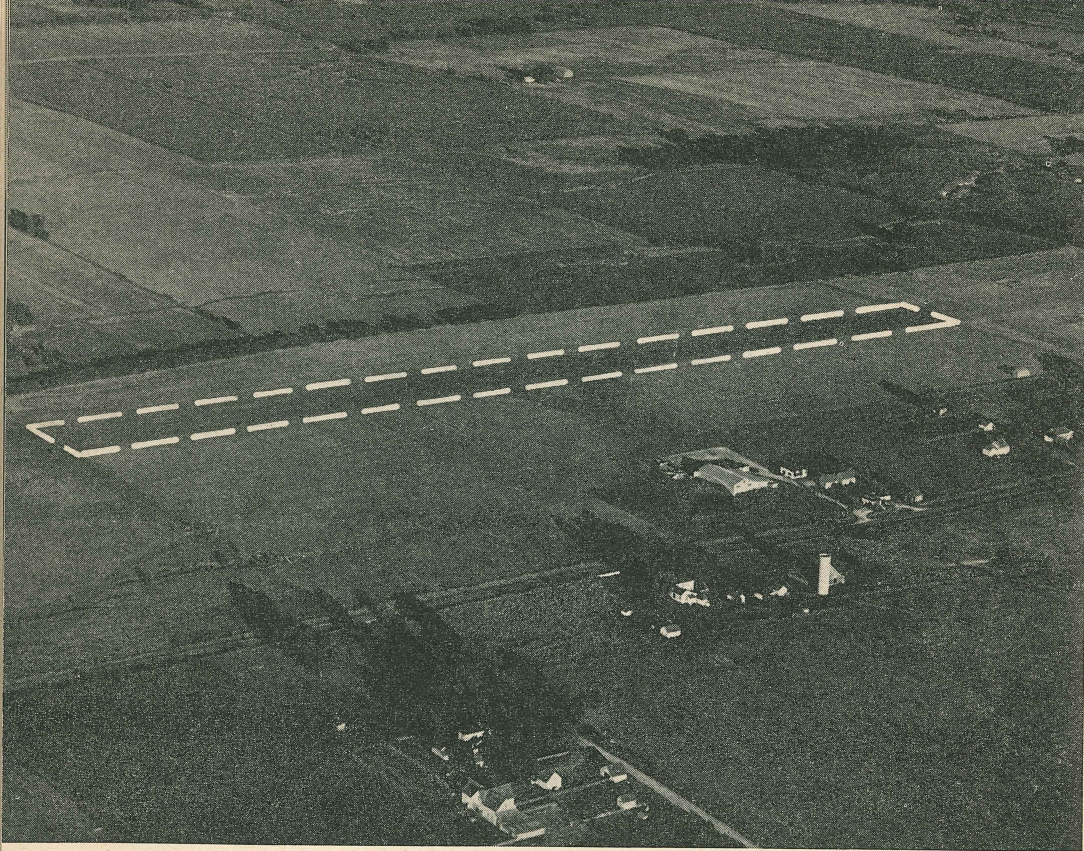
Massie—DORAD

MALDEN—Pop. 2,673, 3.2 mi. NNW on Mo. 25. 3 asphalt runways: NE-SW 5000x150, NW-SE 5000x150 & N-S 5000x150; Elev. 296; Airport inactive—formerly AAF Basic Flight School. Fishing, swimming & hunting in season.

* * * *

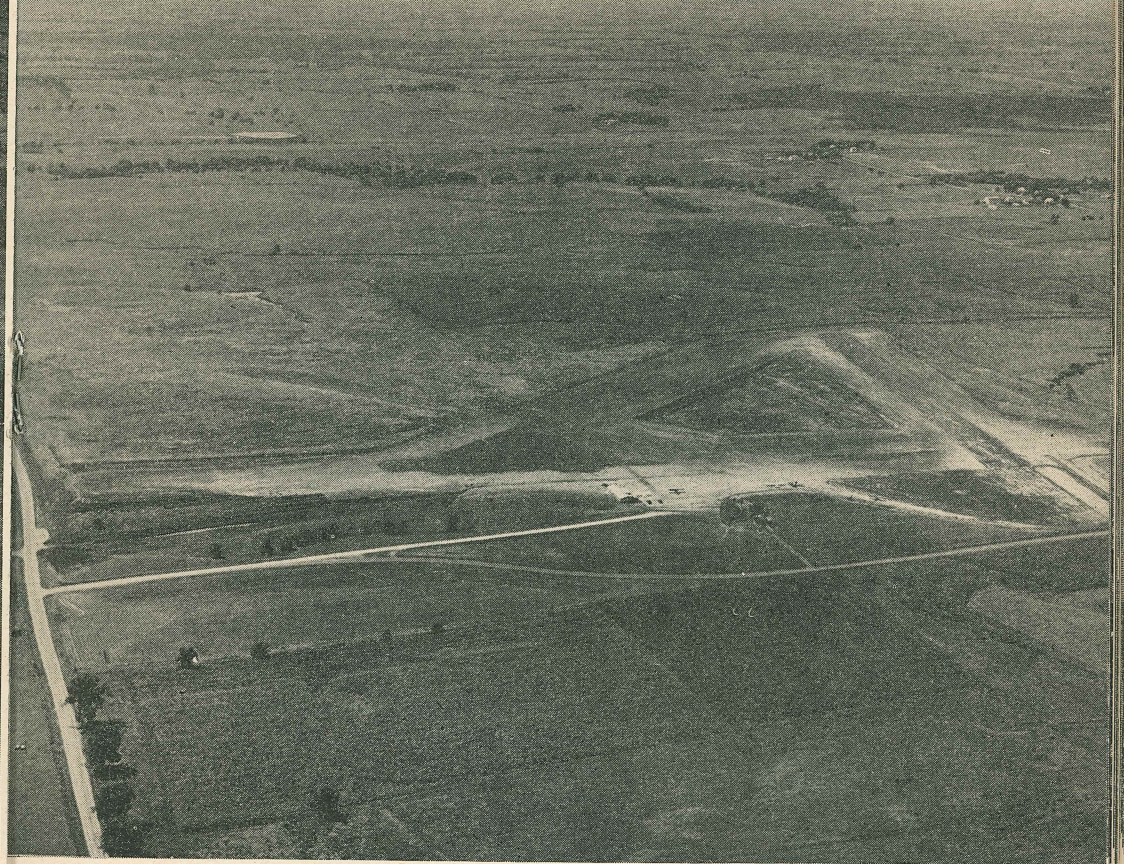
MARCELINE—Pop. 3200, privately owned, 80 acres 1 mile N of city on Mo. 5. 2 turf strips: N-S 1320x150, SW-NE 2000x200; Elev. 825. Wind sleeve, 2 T Hangars, tie-downs. Hotel in town. Hunting and fishing in season.

MARSHALL—Pop. 8600, Municipal, (also CAA intermediate field) Sammie Goldin, Mgr., tel. 702, 95 acres 1.8 miles S of city U. S. 65. 3 turf strips: N-S 3880x588, E-W 3000x494, NE-SW 2625x500; Elev. 800; obstructions, 50' silo near NW corner, 40' pole line to S, 60' trees to W and NW; house and barn on E boundary. Wind sleeve, oil and 80 oct. gas, daylight hrs., hangar, tie-down, 100' airport circle, boundary markers, obstruction markers, field lighted, rotating beacon, repair service, office. CAA weather station on field. Hotels in city; taxi or private car to city. Points of interest: Missouri Valley College, golf course, City Park. Plans for improvements.



Massie—DORAD

MARSHALL—Pop. 8600, "Nicholas Airport," privately owned, R. B. Nicholas, Mgr., tel. 50F4, 80 acres 3.7 miles S on U. S. 65. 1 turf strip—N-S 2630 x 100; Elev. 770E; 25' power line on S boundary. Wind sleeve, hangar 80x60, repair shop, office, modern rest rooms. Weather information from Municipal Airport. Taxi and private car. Hotels in city. Speciality—Sales and service of aircraft; daylight operation only. Points of interest: Missouri Valley College, State Hospital.



MARYVILLE

Massie—DORAD

MARYVILLE—Pop. 6000, Municipal, J. N. Saylor, Mgr., tel. Mutual 47F14, 120 acres 2.2 miles W on Mo. 46. 4 turf landing strips: N-S 2500x300; NE-SW 2250x300; NW-SE 2006x350; E-W 1811x300; Elev. 1154. Wind sleeve, hangar, tie-downs, office, oil and 80 oct. gas, daylight hrs. only. Improvements under construction. Hotels in city. Taxi or private car. Point of interest: Maryville State Teachers College.

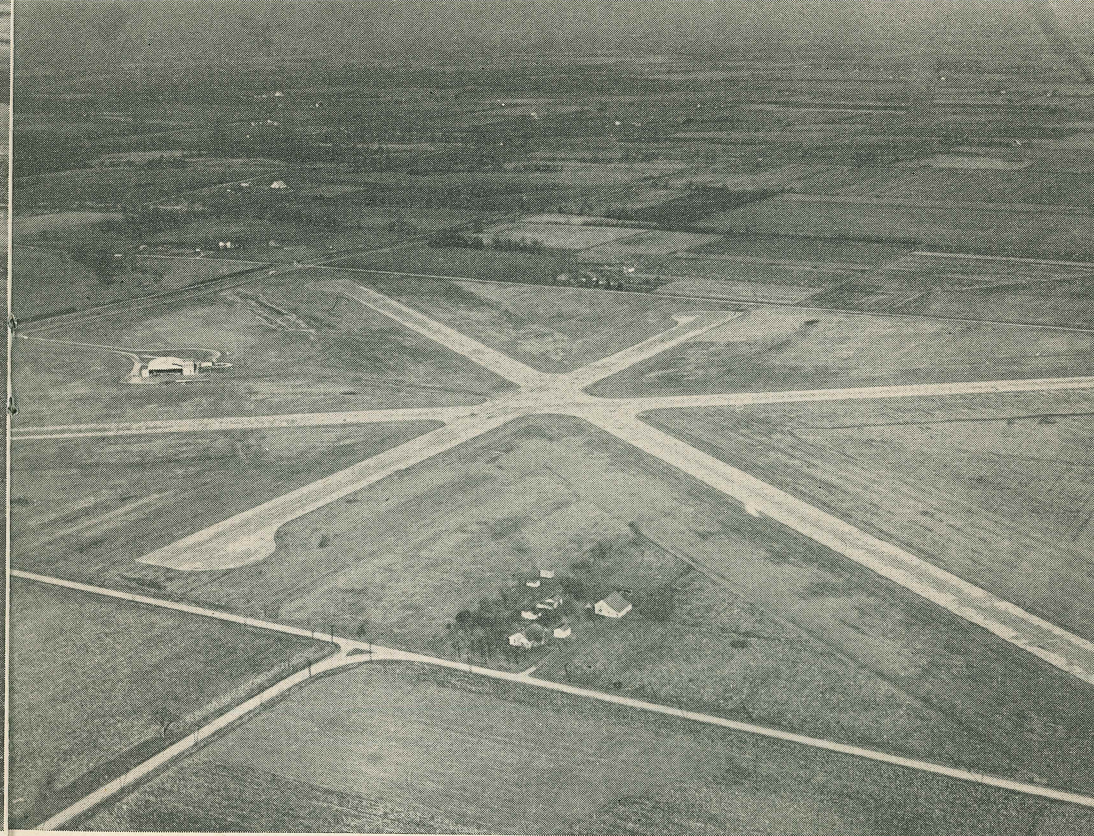
* * * *

MARSHFIELD—Pop. 1,764, privately owned, Marshfield Flying Club, Herman Pearce, Mgr., tel 131, 60 acres on U. S. 66, 1.5 mi NE. 1 N-S turf strip approx. 2000; Elev. 1525E; power lines on N. Wind sleeve, hangar, tie-downs. Taxi. Hotel accommodations in town. Golf course on field.



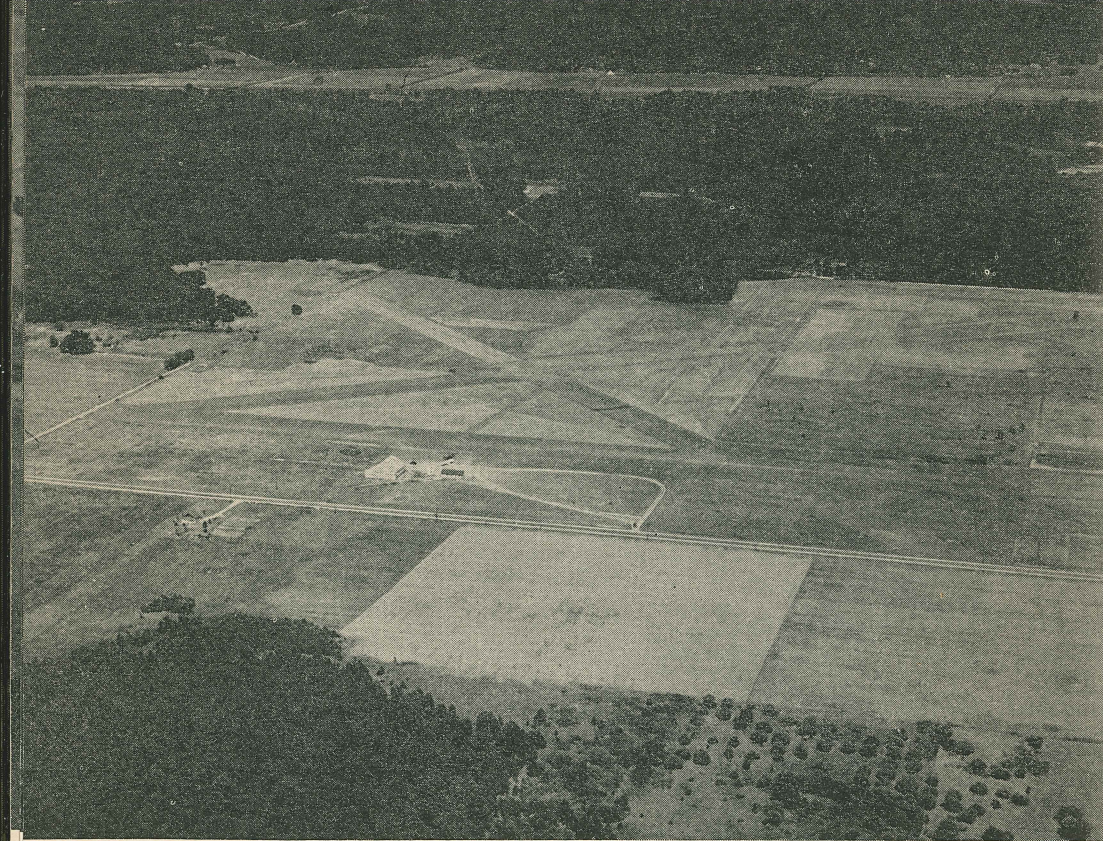
Massie—DORAD

MEXICO—Pop. 9100, privately owned, John C. Hagan, Mgr., tel. 1405, 164 acres 3 mi. E on U. S. 54. 4 turf strips: N-S 2600x200, E-W 2700x200, NE-SW 3500x200, NW-SE 3500x200; Elev. 815ME; 21' pole line along E side of field; 15' pole line on W side of field. Name on hangar, boundary markers, wind sleeve, TEE, tie-down, oil and 80 oct. gas—day only, repair shop, hangar, office, modern rest rooms. Weather information—phone Columbia. Hotels in city, taxi and private car. Point of interest: Missouri Military Academy.



Massie—DORAD

MOBERLY—Pop. 13,000, "Bradley Municipal Airport," Fred Bell, Mgr., tel. 194, 200 acres 3 miles N of city on U. S. 63. 3 Bituminous Macadam runways: N-S 2400x100, NW-SE 3730x100, NE-SW 3730x100; Elev. 855; 20' pole line on S and E. Runway markers, wind sleeve, TEE, tie-down, oil and 80 oct. gas—24 hrs., repair shop, hangar, office, modern rest rooms. Weather information—phone Columbia or Kirksville. Refreshments. Taxi. Hotels in city.



Massie—DORAD



NEOSHO

Witman

NEOSHO—Pop. 5,318, “Commercial Airport,” privately owned, C. E. Elliott, Mgr. no tel. 140 acres 6 mi. NW on U. S. 71. 3 turf strips: N-S 1900x130, NW-SE 2300x100 & NE-SW 2600x100 (Use strips only.); Elev. 1140E. Wind sleeve, field markers, modern rest rooms, oil & 80 oct. gas, daylight hrs., tie-downs, charter service. Weather tel. to Joplin. Hotels & cabins in city. Hunting & fishing in season. Points of interest: Big Spring & Park, Federal Fish Hatchery, swimming pool.

* * * *

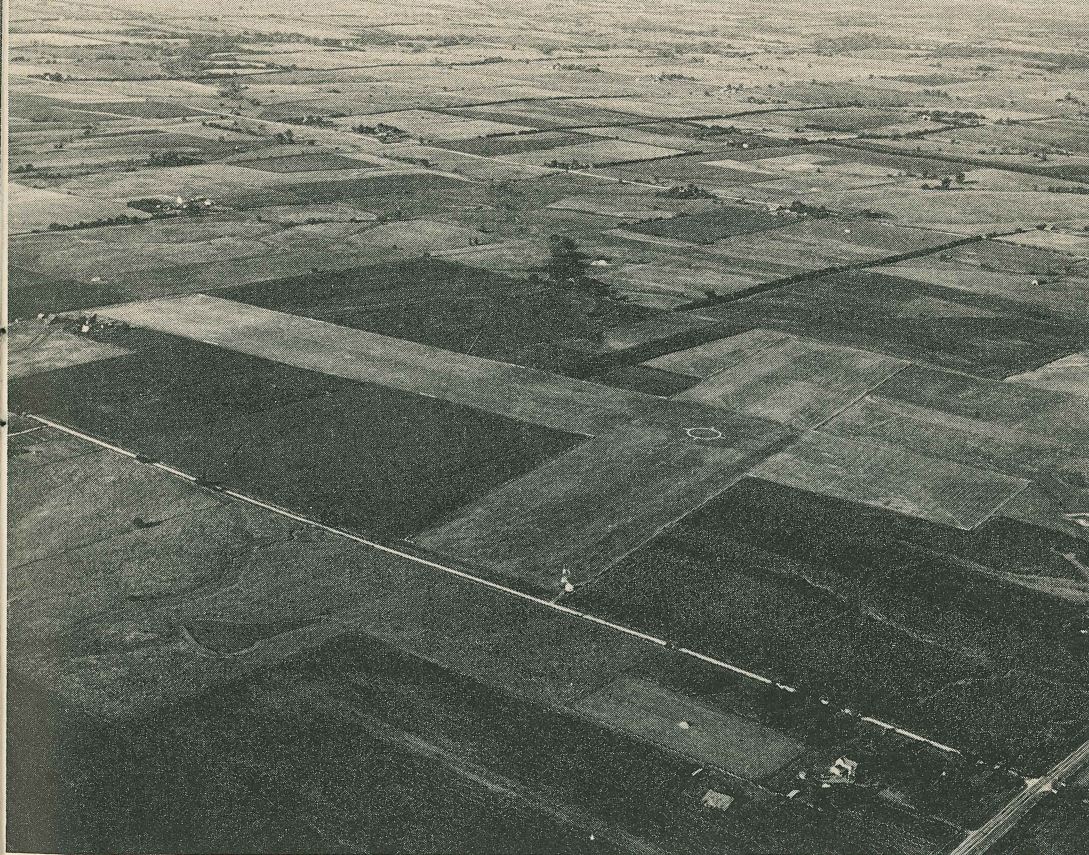
MONETT—Pop. 4,395, privately owned, James W. Dalton, Mgr, tel. 16, 160 acres 1.2 mi. NE on U. S. 60. 3 turf strips: E-W 2500, N-S 2000 & SW-NE 2000, (Use with caution); Elev. 1462ME. 50' chat circle, tie-downs, hangar, charter service, oil & 80 oct. gas daylight hrs., modern rest rooms. Weather by tel. to Joplin. Taxi. Hotels in town. Hunting & fishing in season.

NEOSHO—Pop. 5,318, “Municipal Airport,” Parks Shields, Mgr., tel. 771, 71 acres on U. S. 60, 2.8 mi. SW. 3 turf strips: E-W 2260x300, NW-SE 2800x450 & NE-SW 2800x280; Elev. 1215. Wind sleeve, day & night field markers, 50' chat circle, rotating beacon, hangars, tie-downs, charter service, refreshments, modern rest rooms, oil & 80 oct. gas daylight hrs., A&E mechanic & limited stock repair parts. Weather by tel. to Joplin. Taxi. Hotels & cabins in city. Golf & Country Club adjoins airport—visitors welcome: Hunting & fishing in season. Points of interest: Big Spring & Park, Federal Fish Hatchery, swimming pool.



Massie—DORAD

NEVADA—Pop. 8,181, Municipal, M. E. Garton, Mgr., no tel., 207 acres on U. S. 54, 3.2 mi. NE of courthouse. 4 turf strips: N-S 2640x300, E-W 2640x300 NE-SW 3960x300 & NW-SE 3500x300; Elev. 850ME; pole line W. & SW. Wind sleeve, TEE, field markers, hangars, tie-downs, charter service, oil & 73 oct. gas 24 hrs, A&E mechanic, limited stock repair parts. Portable runway lights available. Hotel & cabin accommodations in city. Fishing & hunting in season. Points of interest: Camp Clark, Cottey College, site of Fort Carondelet, established in 1787 by Pierre Chouteau, Sr. at Hulley's Bluff.



OSBORN

Massie—DORAD

OSBORN—Pop. 360, CAA site No. 4 Intermediate Field, Frank J. Gibbons, caretaker, 60 acres 1.5 miles NW of Osborn on U. S. 36. 2 turf strips: N-S 3217x480; E-W 2509x480; Elev. 1046. Boundary markers, airport circle, field lighted, boundary lights, rotating beacon, wind sleeve. No service.

* * * *

NEW FLORENCE—Pop. 565, CAA site 17 Intermediate Field, Samuel Cobb, caretaker, tel. 48, 135 acres 1 mile SSE of New Florence on U. S. 40. 3 turf strips: N-S 3960x820, E-W 2700x600, NE-SW 3800x700; Elev. 885E; Obstructions marked and lighted; 35' pole line to N; 35' trees to S. Field lighted; boundary markers, rotating beacon, wind sleeve. CAA weather station on field. No service.

LAKE OZARK—Pop. 600, "Sky Lake Airport," privately owned, Wm. C. Sutton, Mgr., No tel. 25 acres 1.5 miles SE of Bagnell Dam on Osage River and S of U. S. No 54. 2 turf strips: E-W 2400x300 and NE-SW 2400x300; Elev. 590E; CAUTION: Obstructions on E and S. Use EW landing strip; field under construction. Oil and 80 oct. gas, tie-downs, transportation to Dam available. Improved facilities planned. Lodges and cabins on Lake. Fishing and hunting in season.

* * * *

OWENSVILLE—Pop. 1,439, "Depperman Field," privately owned, Sam Reyburn, Jr., Mgr., 65 acres 0.7 mi. NW of city. 3 turf strips: NW-SE 2650x50 (best), E-W 1850x50 & N-S 1350x50; CAUTION: livestock grazing. Stripped red & white hangar roof, wind sleeve, tie-downs, oil & 80 oct. gas daylight hrs. Weather via radio to Vichy. Taxi. Hotels in city. Hunting & fishing in season; Gasconade River 15 miles & Bourbeuse River 7 miles.

* * * *

PALMYRA—Pop. 2,285, privately owned, C. T. Fagan, Mgr., SE edge of city. 2 turf strips: N-S 1800x100, E-W 850x100; Elev. 750. Wind sleeve, oil and 80 oct. gas, 2 hangars, tie-downs. Hotel in town. CAUTION: Use N-S strip except in high E or W wind.

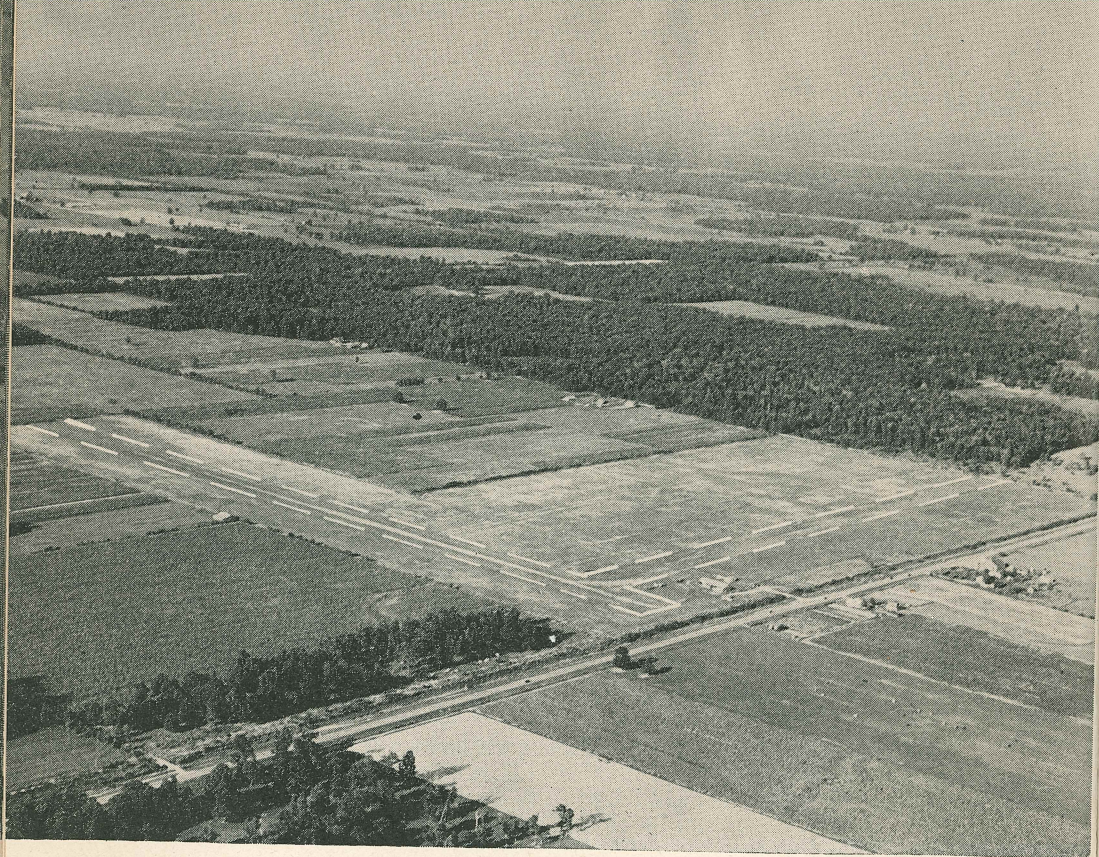
PASSAIC—Pop. 75, privately owned, John Cushard, Mgr. and owner, no tel, 1.9 mi. E on gravel road. 2 turf landing strips: E-W and NE-SW—size. unknown; Elev. 865E. Wind sleeve, field markers, tie-downs, oil and 80 oct. gas.

* * * *

PERRYVILLE—Pop. 3,907, privately owned, Ralph W. Pingel, Mgr., 2½ mi. NW of town. 3 turf landing strips: E-W 1800, N-S 1600, and NE-SW 2500; Elev. 550E. Wind sleeve, tie-downs, oil and 80 oct. gas available. Hotel accommodations and cabins in city. Fishing and hunting in season.

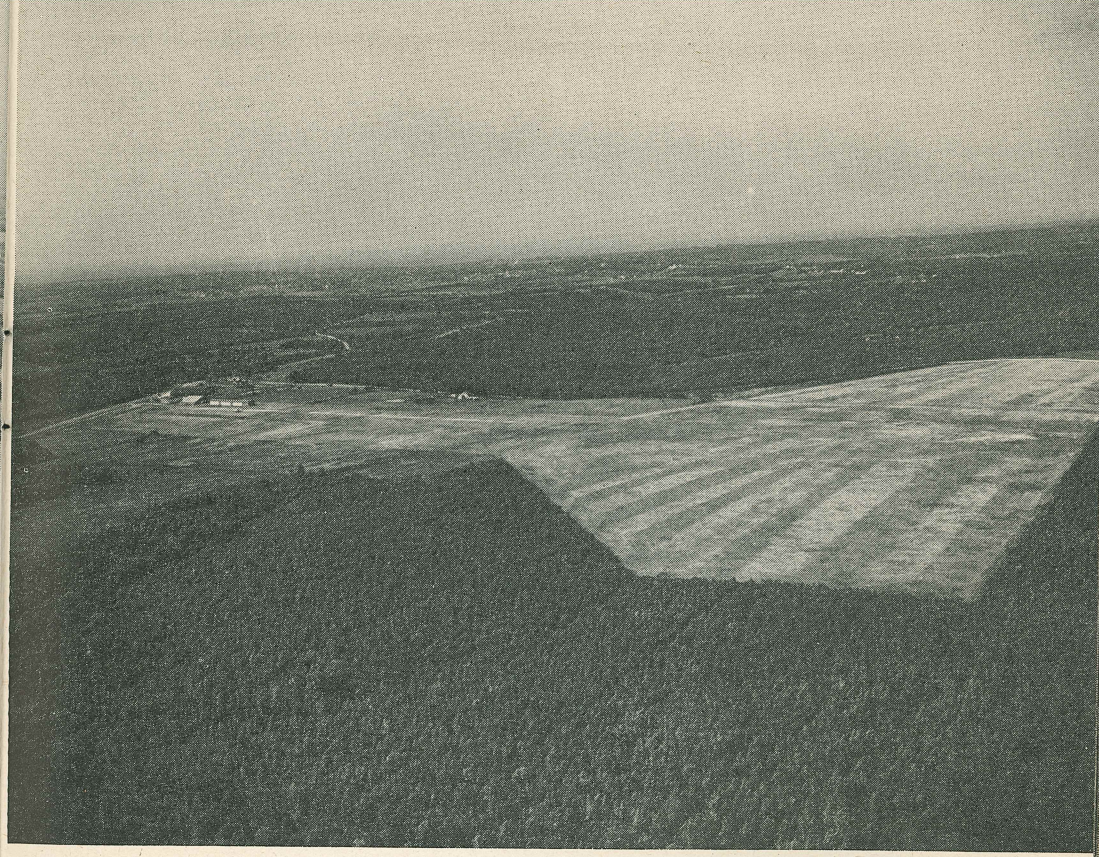
* * * *

PLEVNA—Pop. 100, privately owned, Hiram Palmer, owner, 80 acres 2 miles NW Plevna on Missouri 15. 2 turf landing strips: N-S 2000x100; NW-SE 2000x100; Elev. 812E. No service. Farm house ¼ mile E—telephone.



Hammond & Irwin

POPLAR BLUFF—Pop. 11,163, “Earl Fields,” Municipal, E. Z. Newsom, Jr., Mgr., tel. 3311, 120 acres 4 mi. ENE on U. S. 60. 2 turf strips: N-S 2550x300, and E-W 2500x300; Elev. 325; power line on S side. Wind sleeve, field markers, hangars, tie-downs, mechanic service, taxi & airport car, refreshments, charter service, modern rest rooms, oil & 80 oct. gas daylight hrs. Weather tel. to Advance. Hotels in town. Hunting & fishing in season; Wapapello Lake & Black River.



Wilman

ROLLA—Pop. 5,141, Municipal, J. S. Campbell, Mgr., tel. 4513, 140 acres 4 mi. NE on U.S. 66. 4 turf strips: N-S 3200, E-W 3100, NE-SW 2000 & NW-SE 2400; Elev. 1201ME; CAUTION: Transmission line N of field. “Rolla” on hangar, wind sleeve, TEE, hangars, tie-downs, charter service, oil, 80 & 91 oct. gas daylight hrs., A&E mechanic, limited stock repair parts & complete overhaul small craft, modern rest rooms, refreshment and lunchroom service adjoins. Portable runway lights available. Weather via radio every 30 min. Taxi & airport car. Hotel & cabin accommodations in Rolla. Bowling alleys adjoin airport. Hunting & fishing in season. Point of interest: Rolla School of Mines.

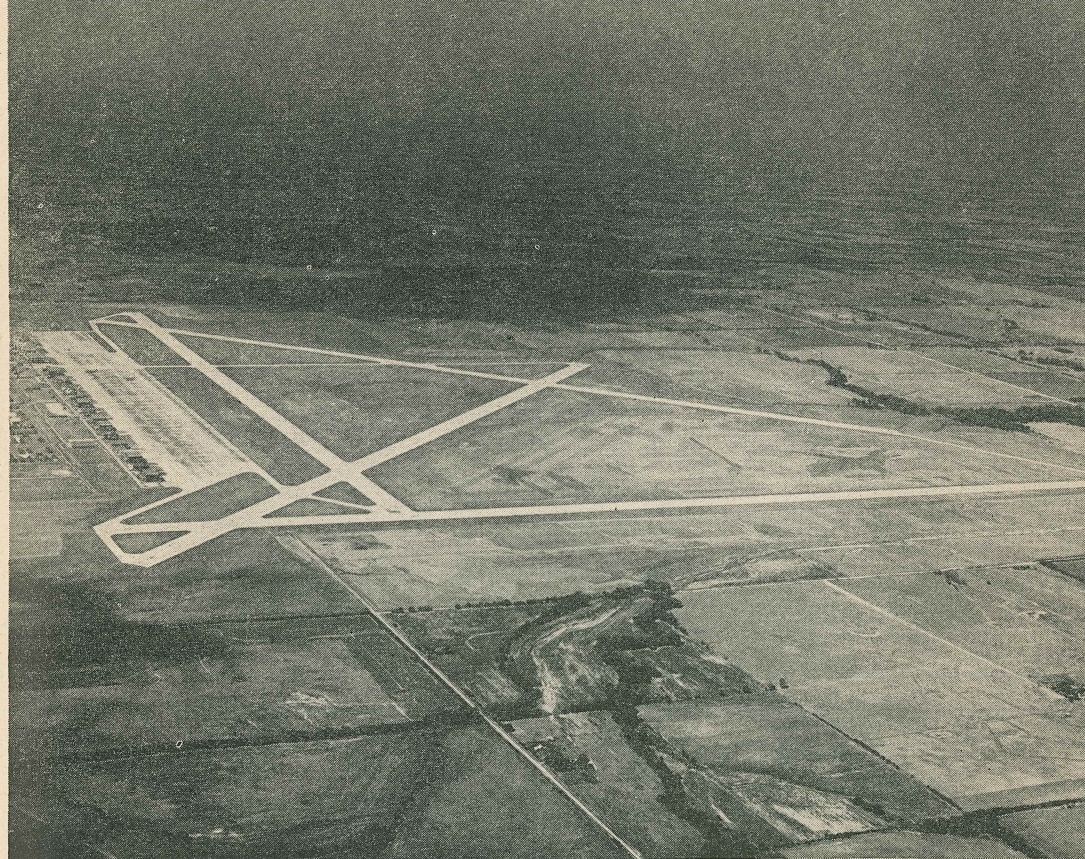
SAVANNAH—Pop. 2,108, privately owned, Elmer L. Bowman, Mgr., 30 acres 1.3 miles east. 2 turf strips: N-S 1250x100, WSW-ENE 1300x100; Elev. 1025E. Oil and 80 oct. gas, marked by flags on strips, wind sleeve, hangar, tie-down. **CAUTION:** Short, rough, and rolling. Use strips only.

* * * *

SEDALIA—Pop. 21,000, Municipal, Jack Funk, Mgr., tel. 44F2, 180 acres 6.3 miles W on U. S. 50. 3 turf strips: N-S 1800, E-W 1400, and NE-SW 3000; Elev. 834. Field markers, wind sleeve, oil and 80 oct. gas—daylight hrs., hangar, office, repairs, tie-downs. Hotel accommodations and cabins in city. Taxi and private car. Point of interest: Missouri State Fairgrounds.

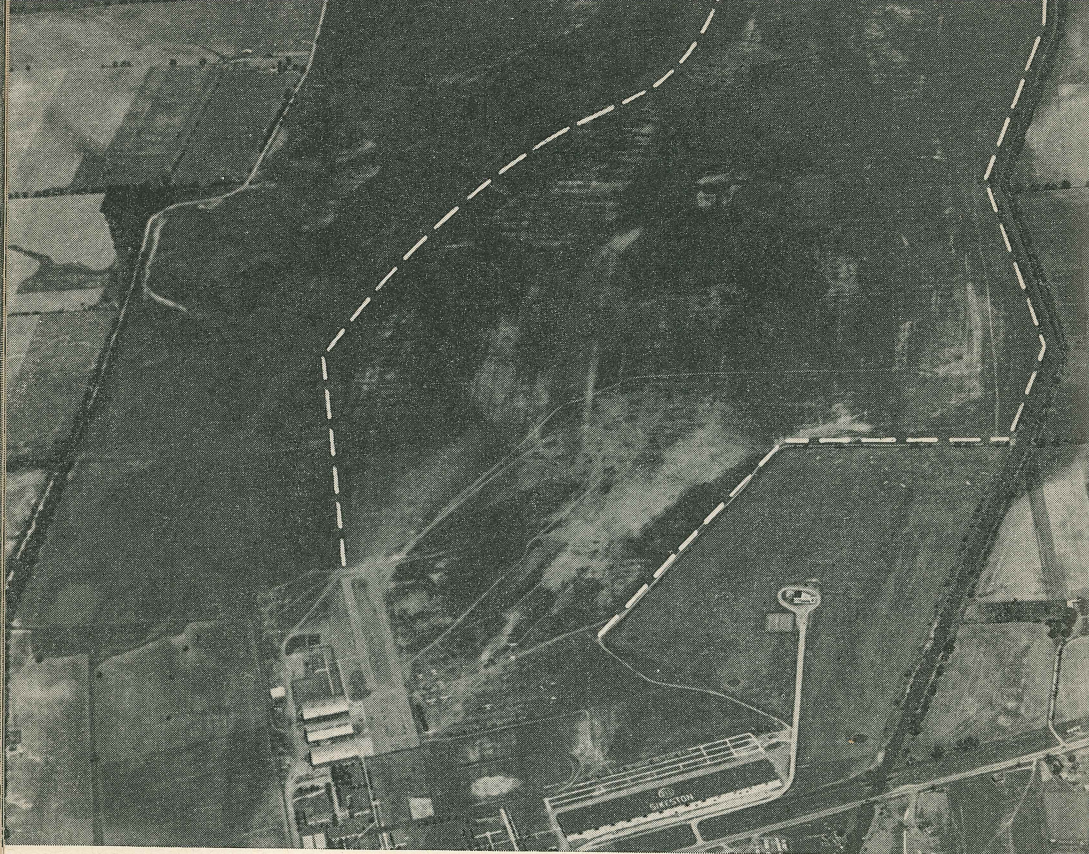
* * * *

SEYMOUR—Pop. 751, privately owned, Harold Owen, Mgr., tel. 118F21, 60 acres 3 mi. N of U. S. 60, 4.7 mi. NE city square. 1 turf strip NE-SW 2200x60; Elev. 1500E. Wind sleeve, tie-downs, charter service, oil & 80 oct. gas daylight hrs. Hotel accommodations in town—transportation available. Quail hunting in season.



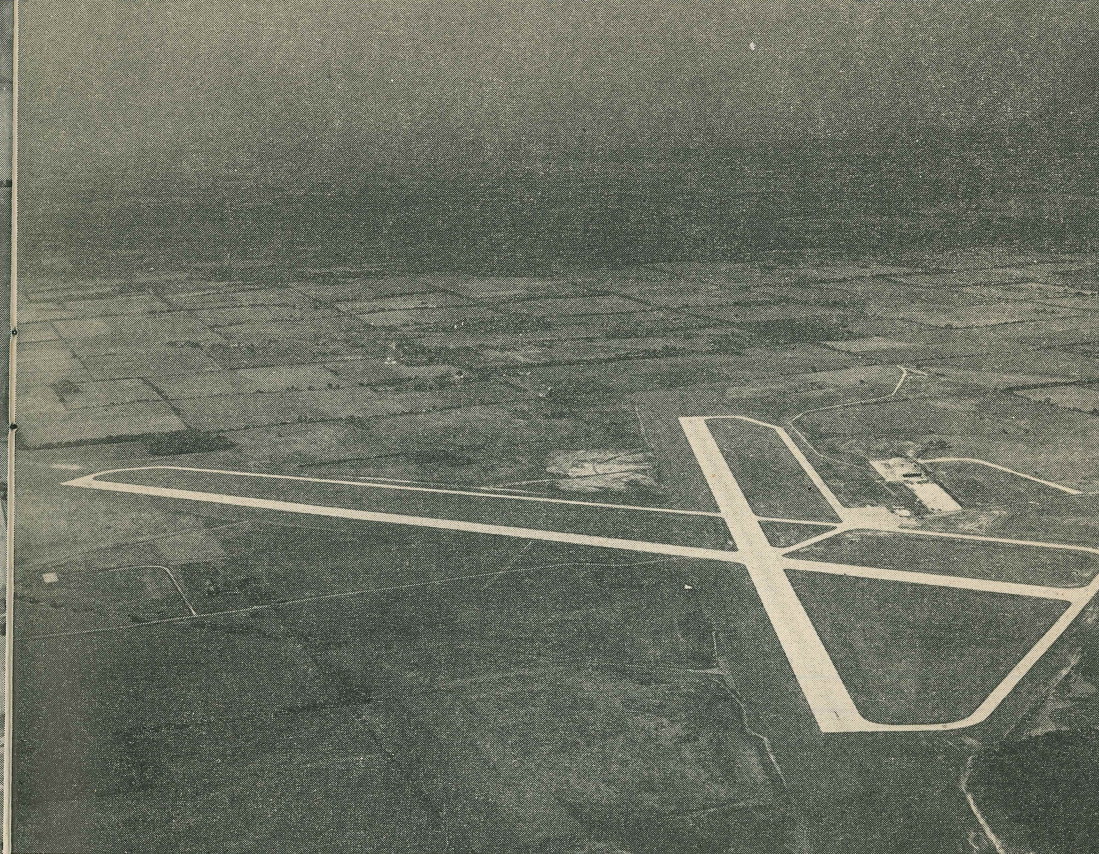
Massie—DORAD

SEDALIA ARMY AIR FIELD—3 miles S Knobnoster. 4 concrete runways: N-S 7200x150, E-W 7200x150, NE-SW 7200x150, NW-SE 7200x150; Elev. 834. Wind sleeve, tetrahedron, complete lighting facilities. Military field. Closed to civilians except in emergencies or with prior permission from base commander.



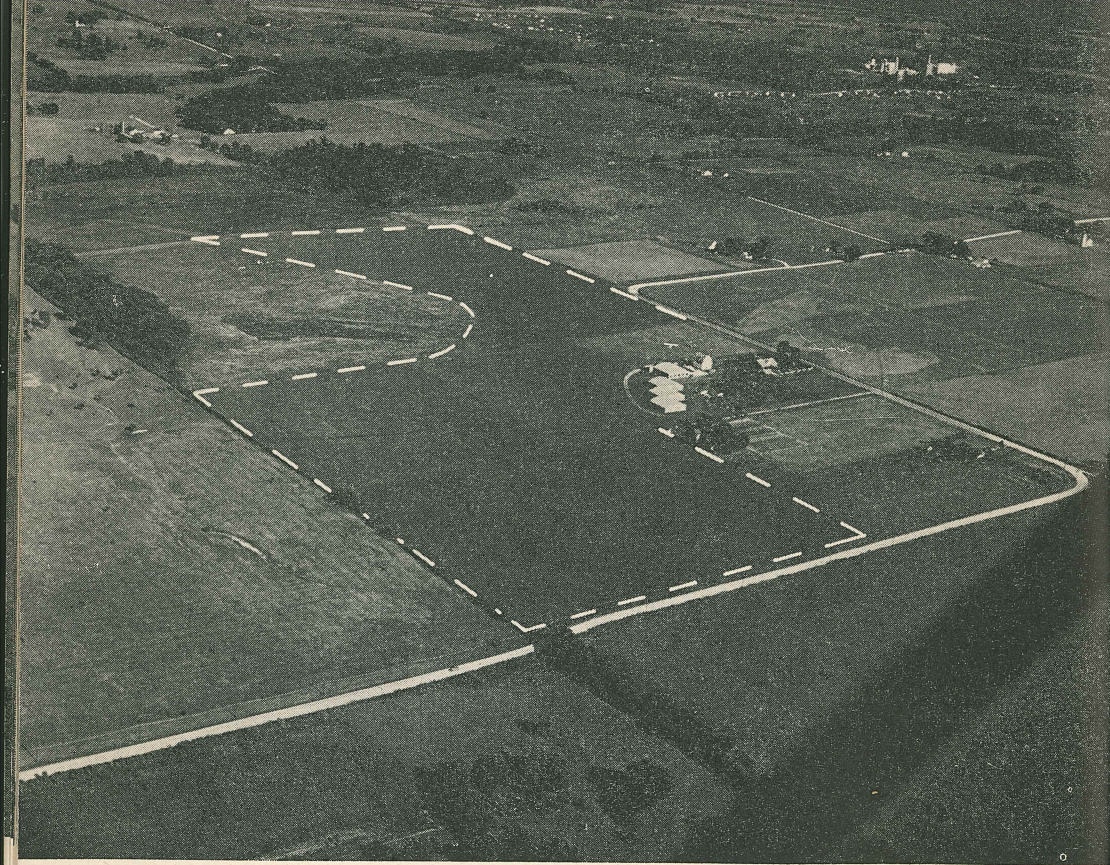
Dysart-Auer

SIKESTON—Pop. 7,944, Municipal—formerly “Harvey Parks.” Don Edward Robinson, Mgr., tel. 396, 2 miles NE on U. S. 60 and 62. 3 turf strips: N-S 3700x300, NE-SW 5800x300, and SE-NW 2200x300; Elev. 315. Airmarked, wind sleeve, field markers, hangars, tie-downs, oil and 80 oct. gas, daylight hours., A & E mechanic, limited stock repair parts and complete overhaul small craft, refreshments, modern rest rooms, taxi and airport car, charter service. Weather tel. or radio to Advance. Hotel accommodations. Municipal golf course and club house adjoins airport—visiting pilots welcome. Fishing, hunting and swimming in season.



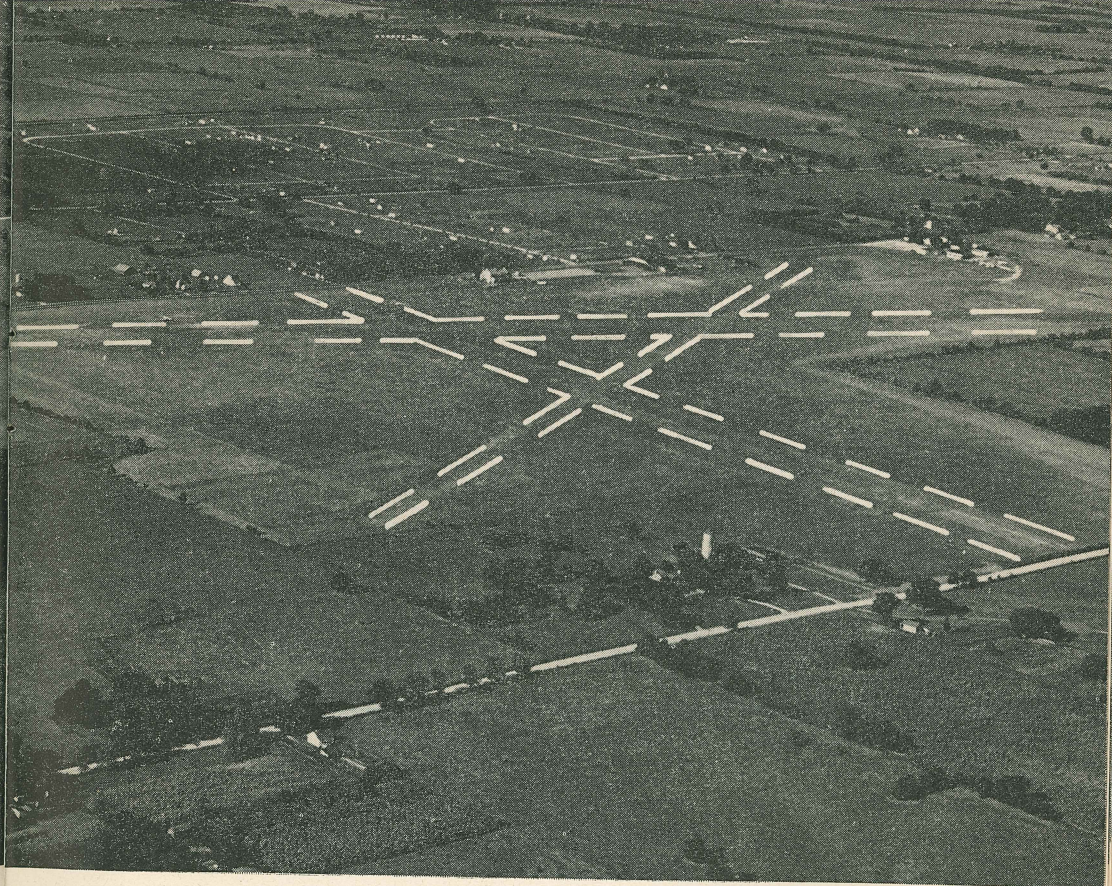
Massie—DORAD

SPRINGFIELD—Pop. 61,238, “Springfield Municipal Airport,” Russ Johnston, Mgr., tel. 32266, 840 acres 5.5 mi. WNW of city & 2 mi. W. of junction, Mo. 13 & U. S. 66. 2 paved runways: NW-SE 5600x150 and NNE-SSW 5600x150; 1,000' turf available each end runways, (Use runways & taxi strips only—balance of field rough.) Elev. 1269. Tetrahedron, day & night field markers, rotating beacon, hangars, tie-downs. Radio-call letters SX; 80, 91 & 100 oct. gas & oil 24 hrs., mechanic service, U. S. Weather station on field. Airline & charter service. Transportation—\$.50 per passenger to city. Modern rest rooms, refreshment & lunchroom service. Hotel & cabin accommodations in city. Points of interest: O'Reilly Gen. Hospital, Southwest Mo. State Teachers College, Drury College, National Cemetery, U. S. Dept. of Justice Medical Center.



Massie—DORAD

SPRINGFIELD—Pop. 61,238, "McFarland Field," privately owned, E. H. McFarland, Mgr., tel. 33610, 120 acres 4 mi. SSE near U. S. 65. 2 turf strips; NE-SW 3000x200 & NW-SE 2600x200, (Use with caution); Elev. 1310E. Wind sleeve, hangars, tie-downs, complete overhaul small craft, modern rest rooms, refreshments. Weather tel. Municipal airport. Charter service. Taxi. Hotel & cabin accommodations in city. (For points of interest see Springfield Municipal Airport.)



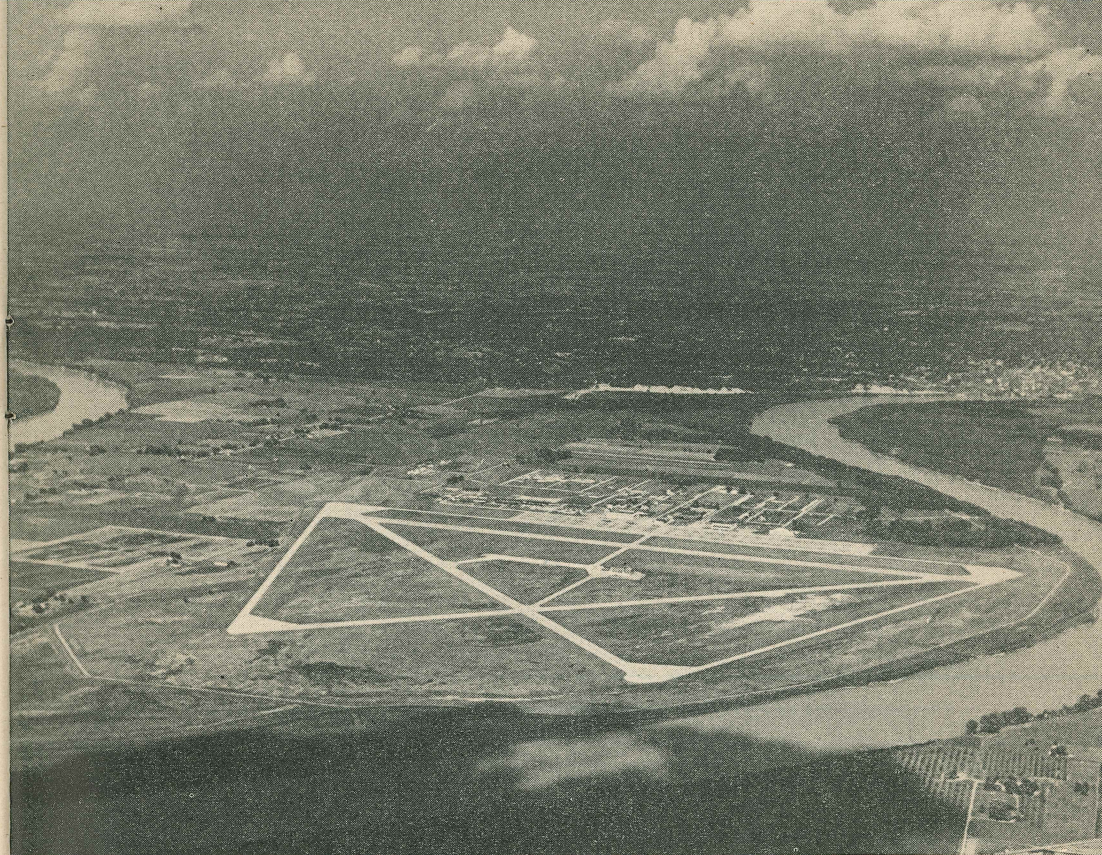
Massie—DORAD

SPRINGFIELD—Pop. 61,238, "Queen City Airpark," privately owned, Francis L. Rogers, Mgr., tel. 2686 & 561, 100 acres 0.5 mi. E of U. S. 60 & 65. 3 turf landing strips: N-S 2400, NE-SW 2600 & NW-SE 2600; Elev. 1367. Airmarked, wind sleeve, TEE, field markers. Boundary, obs. lights, and beacon on request. Hangars, tie-downs, 73 & 80 oct. gas & oil 24 hrs. A&E mechanic, average stock repair parts & complete overhaul small craft, refreshment & lunchroom service, modern rest rooms. Weather tel. to C. A. A. sta. Charter service. Taxi. Hotel & cabin accommodations in city. (For points of interest see Springfield Municipal Airport.)

STEELE—Pop. 1,585, James L. Burton, Mgr., no tel., 2 miles WNW; formerly AAF Auxiliary Field. 2 asphalt runways with parallel taxi strips: N-S 4000x100 and NE-SW 4000x100; Elev. 258. Oil and 80 oct. gas, hangar. CAUTION—Livestock may be on field.

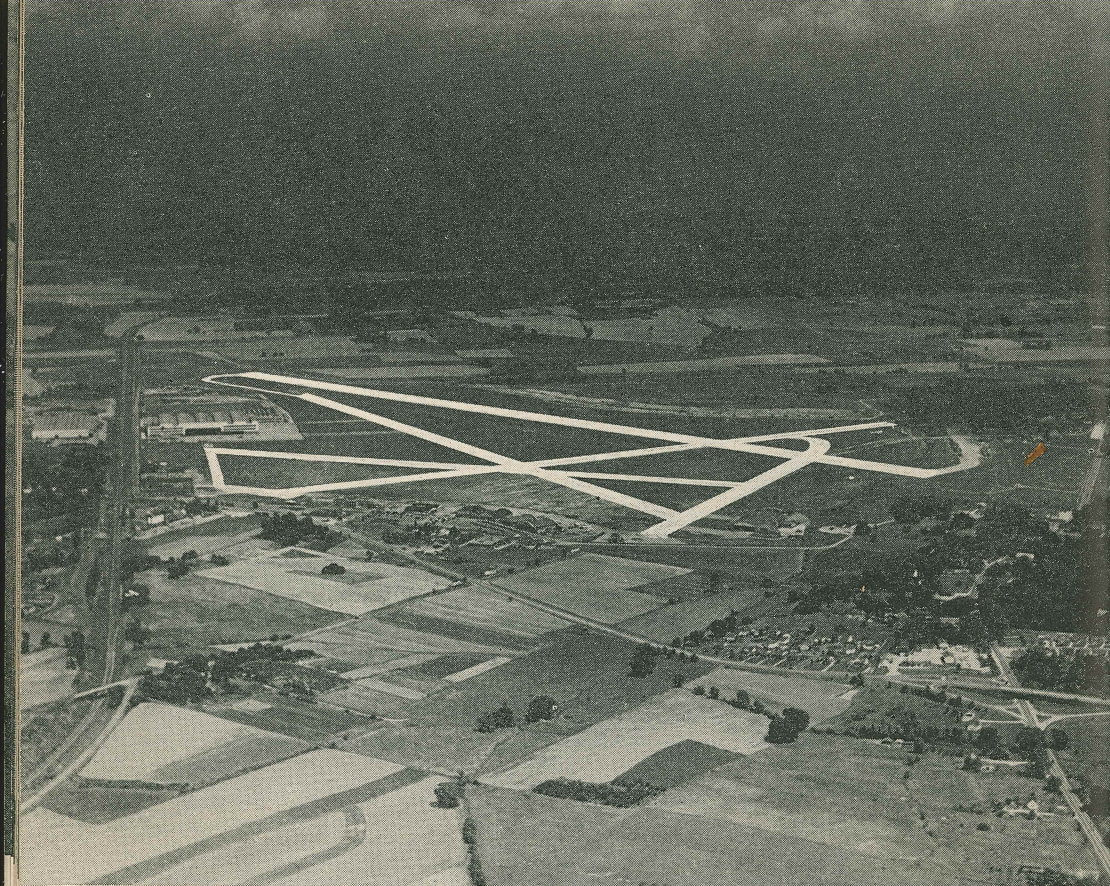
* * * *

ST JOSEPH—Pop. 76,000, "Glenota Field," privately owned, G. A. Seward, Mgr., 110 acres 8 miles SW of city. 2 turf strips: N-S 1600x150, E-W 3000x150; Elev. 835. Wind sleeve, oil and 80 oct. gas, hangar under construction, tie-downs, charter service. Points of interest: Old "Pony Express Stables," Krug Park.



Massie—DORAD

ST. JOSEPH—Pop. 76,000, "Rosecrans Municipal Airport," I. H. Johnson, Mgr., tel. 29771, 4 miles W. 3 concrete runways: NE-SW 6000x100, NW-SE 6000x100, N-S 5588x150; Elev. 1200. Wind sleeve, tetrahedron, all grades oil and gas, complete service planned. CAA radio range, call letters KHDV—341 kcs. CAA—Weather Bureau Weather station on field. American Airline Cargo Base, Mid-Continent Airline service. Points of interest: Old "Pony Express Stables," Krug Park.



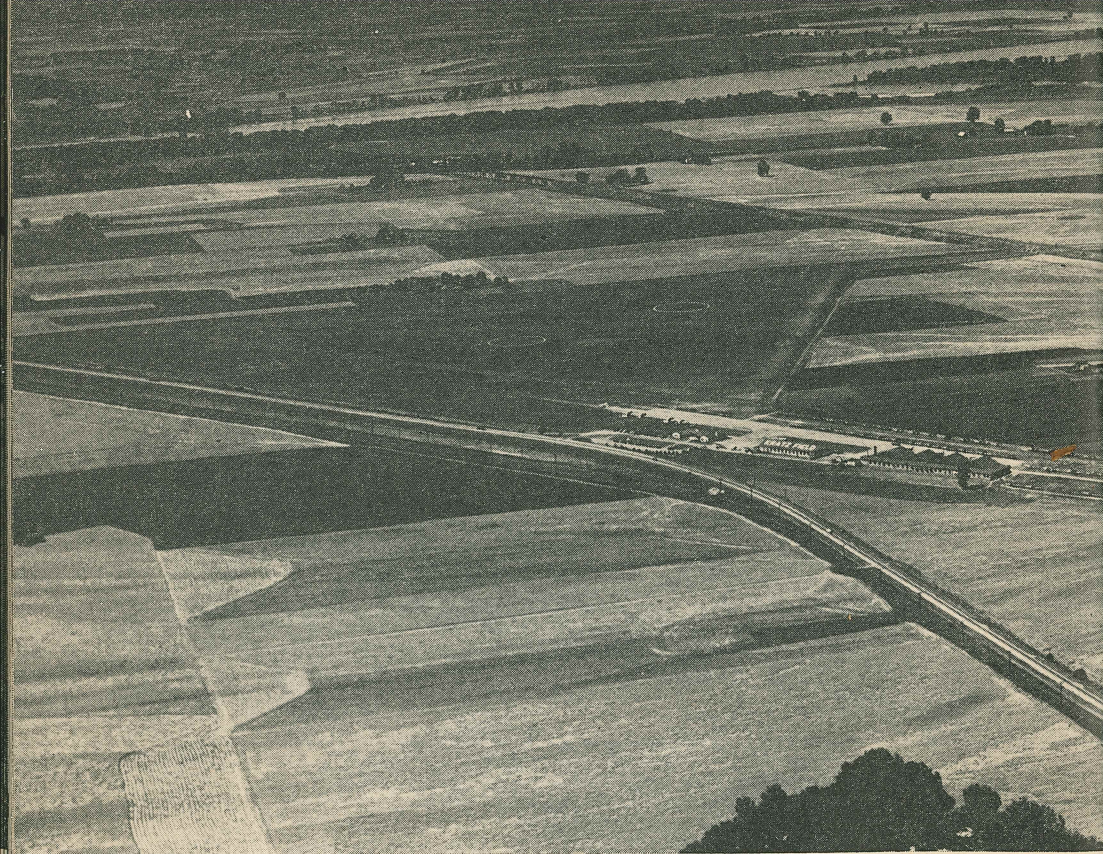
Massie—DORAD

ST. LOUIS—Pop. 816,000, "Lambert—St. Louis Municipal," John B. Randolph, Mgr., tel. TE2987, 1,050 acres (650 available). Runways: 6 and 24—6000x200 concrete; 34 and 16—4700x100 asphalt; 7 and 25—5200x100 asphalt; Elev. 538. Lighting—beacon, boundary, approach, obstruction, landing area flood light—beacon rotating clear, with code beacon flashing characteristic LS. Radio—St. Louis Control Tower, broadcasting on 278 kcs., 209 kcs., 126.18 mcs. and 142.74 mcs. Control Tower guards the following frequencies: 3105, 4495, 6210, and 3117.5 kcs., also 126.18 and 142.74 mcs., also broadcasts on 209 kcs. for the purpose of approach control. St. Louis Radio broadcasting 209 kcs. Voice and radio range. Telegraph and teletype service on field 24 hrs. per day. Service facilities—all oct. gas, and all grades motor oil. Aircraft storage and complete repair facilities. Restaurant on field—serving 24 hrs. Bus and limousine service to city. Airline service by TWA, American, Mid-Continent, Eastern, and Chicago & Southern.

ST. LOUIS (ELLISVILLE)—Pop. 288, privately owned, Les W. McManis, Mgr., tel. Walnut 7561, 70 acres on U. S. 50, 1.4 mi. NE of town. 2 turf strips: NW-SE 1800x350 & SW-NE 1300x350; Elev. 750. Wind sleeve, TEE, field markers, hangars, tie-downs, charter service, oil & 80 oct. gas daylight hrs, minor mechanic service. Taxi & public bus available. Hotels & cabins nearby. Castlewood & other Meramec River summer vacation spots within 4 mi.

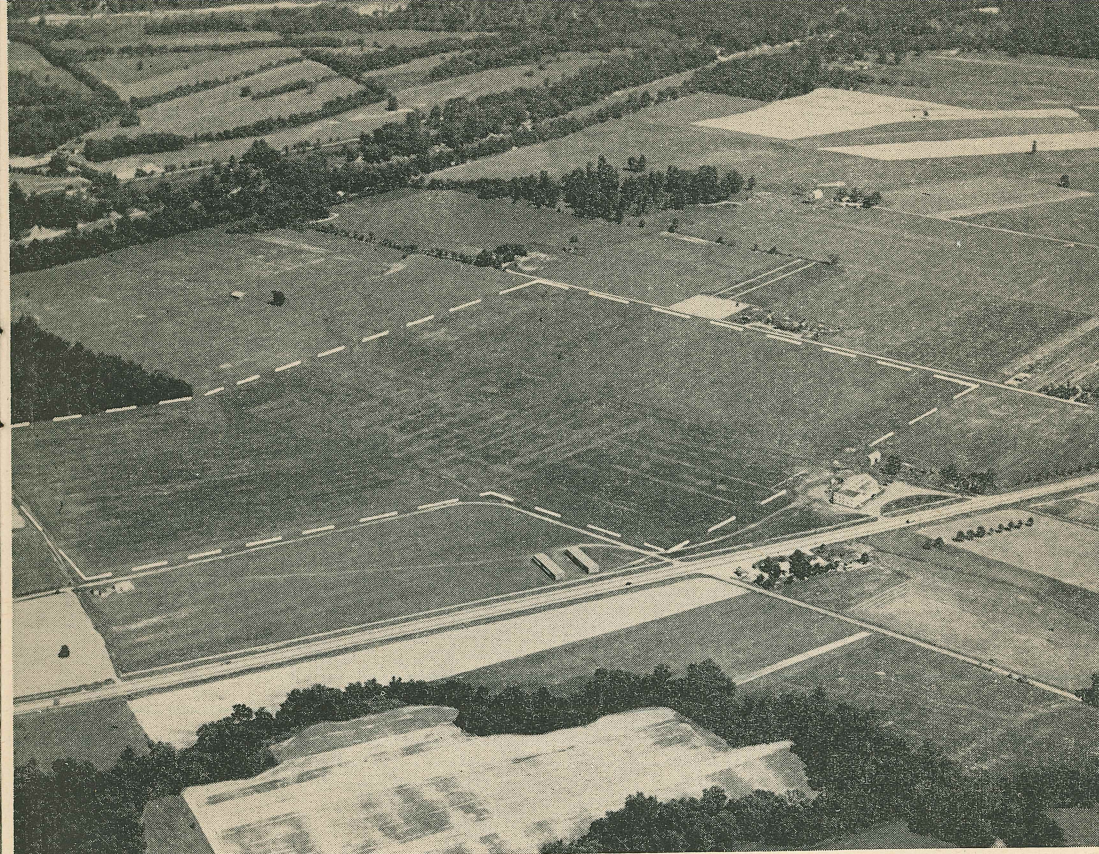
* * * *

ST. LOUIS—Pop. 816,000, "Petty Marine Flying Service," Cecil and Macon Petty, operators. Located on Mississippi River at foot of Market Street, between Eads and MacArthur Bridges. Plans for student instruction, airplane rental, sales, and service, storage and mooring facilities for private seaplanes and service for transient seaplanes.



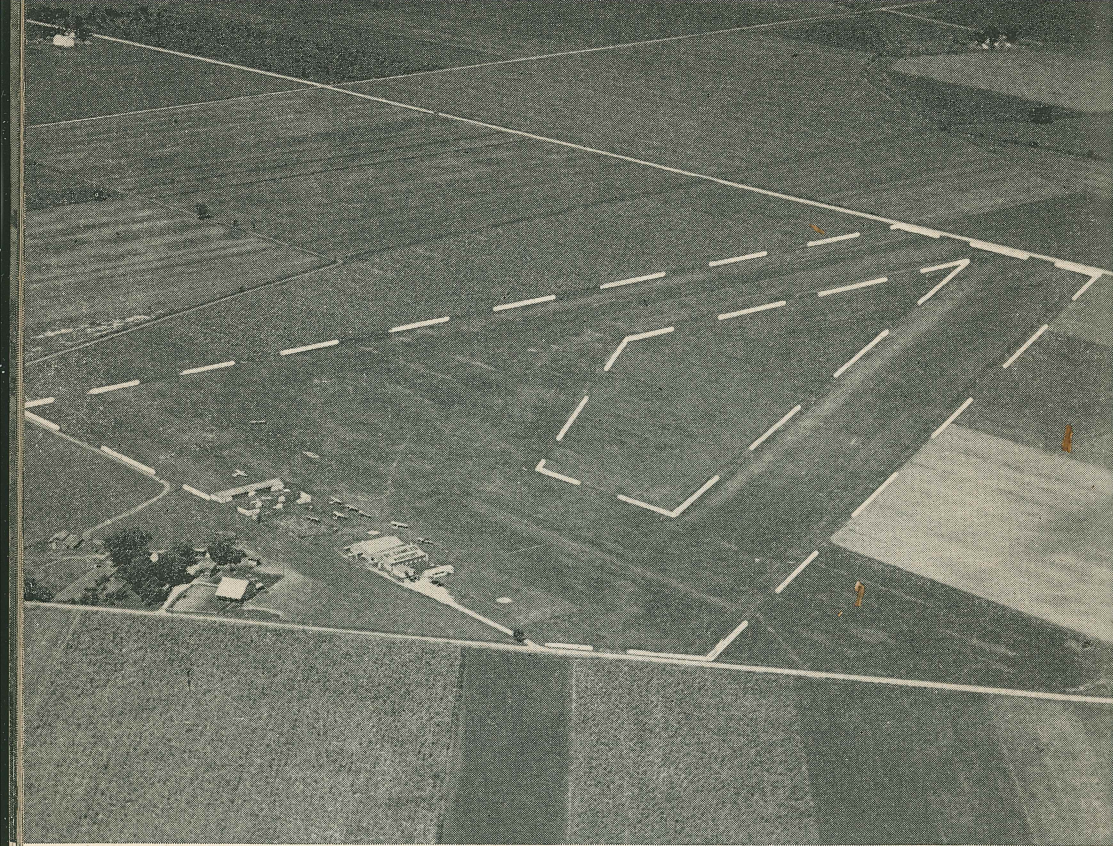
Massie—DORAD

ST. CHARLES—Pop. 10,803, "Kratz Airport," privately owned, Carl O. Henke, Mgr., tel. TE5-3130. 120 acres 2.4 mi. ESE on U. S. 40. 3 allway turf strips: NE-SW 3000, N-S 2700 & NW-SE 2700. "Kratz Field" on hangar, wind sleeve, TEE, field markers, hangars, tie-downs, charter service. 80 & 91 oct. gas & oil daylight hrs, mechanic service, good stock repair parts & complete overhauls. Weather from Lambert Field. Modern rest rooms, grill & refreshment service. Taxi. Bus every 30 min. Portable runway lights available. Hotel accommodations in St. Charles & St. Louis. Points of interest: West Lake Amusement Park, Lindenwood College.



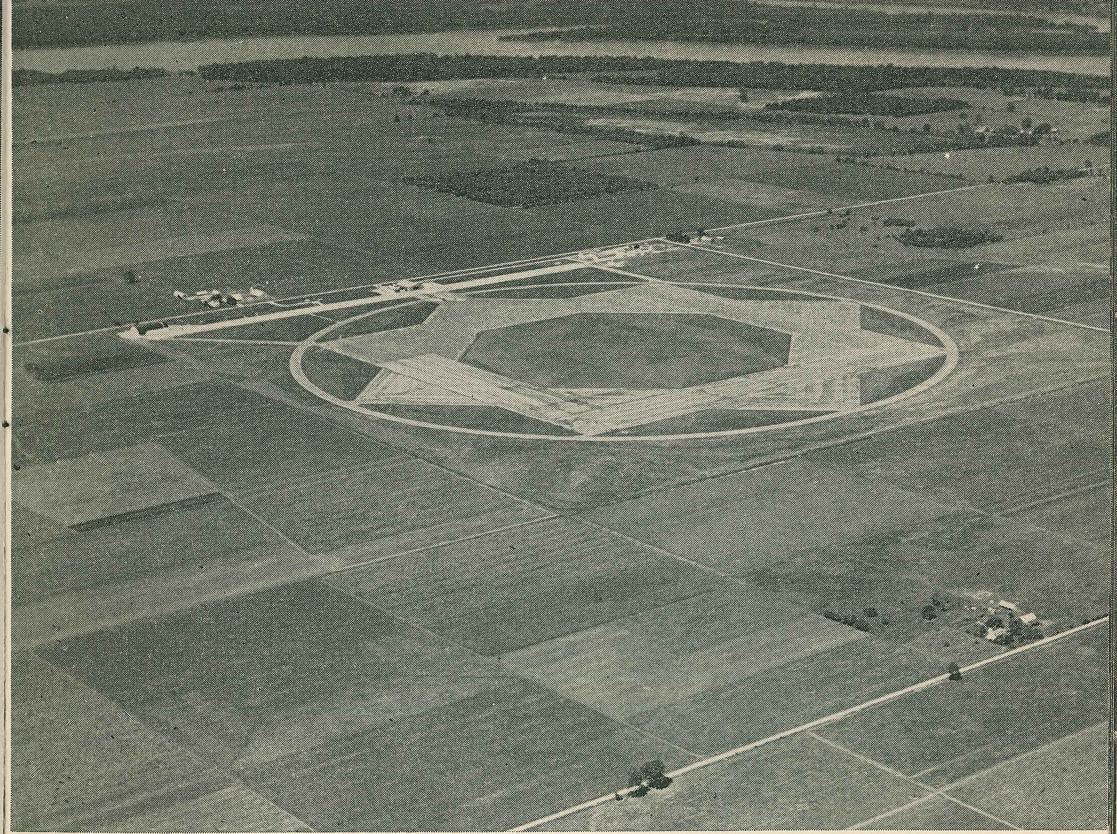
Hammond & Irwin

ST. LOUIS (VALLEY PARK)—Pop. 2,091, "Meramec Field," privately owned, Ray Branson, Mgr., tel. Fenton 99, 114 acres on U. S. 66, 1.5 mi. ESE Valley Park. 4 turf strips: N-S 3200, NE-SW 3000, NW-SE 3600 & E-W 2550; Elev. 450. "Meramec Airport" on hangar roof, 200' circle, wind sleeve, TEE & field markers, oil & 80 oct. gas 24 hrs., A&E mechanic, average stock repair parts, major repairs, hangars, tie-downs, modern rest rooms, refreshments. Transportation to nearest public transportation. Weather by tel. to Lambert Field. Charter service. Portable runway lights available. Hotels in city & tourist camps nearby; Meramec River resort area, Boating Club.



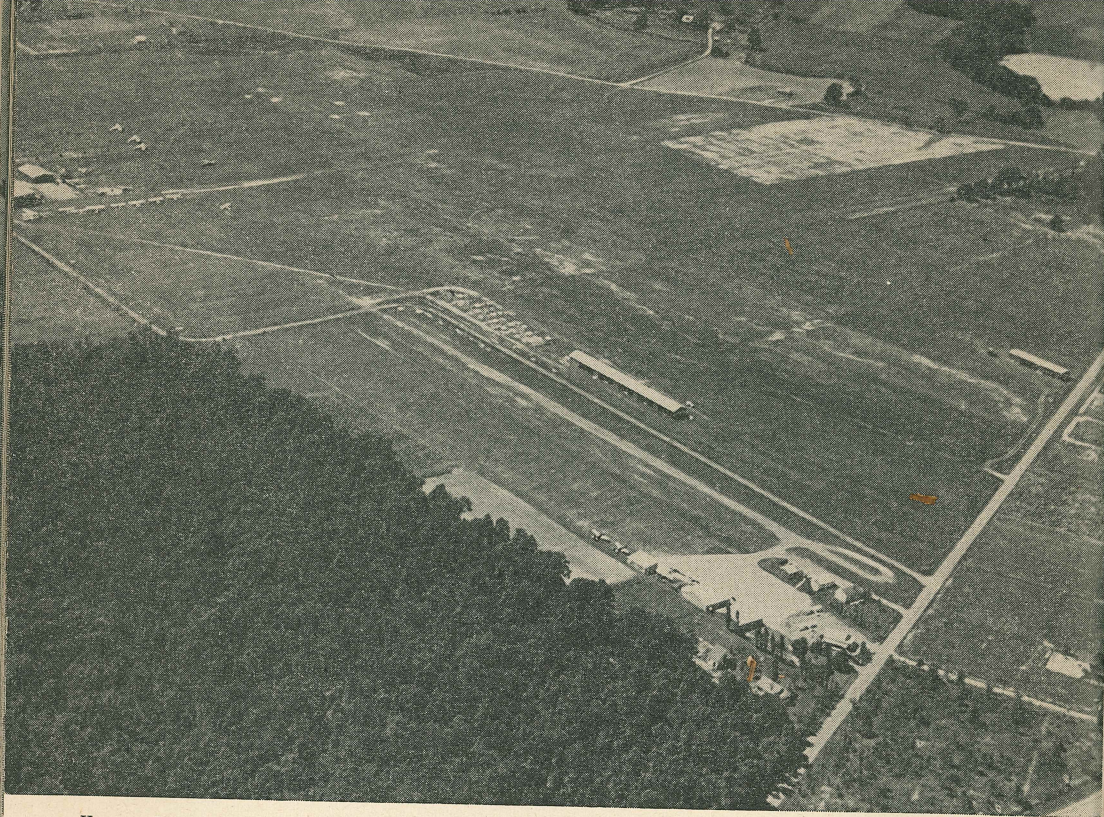
Hammond and Irwin

ST. CHARLES—Pop. 10,803, privately owned, Clarence W. McGarvey, Mgr., 86 acres 5.9 miles NW of post office on U. S. 94 and Mo. 13. 2 turf strips: E-W 2060x300, N-S 2850x300; Usable Allway; Elev. 470ME. Wind sleeve, boundary markers, hangars, tie-downs, transportation, oil and 80 oct. gas available. Hotel accommodations and cabins in city. Points of interest: Lindenwood College, West Lake Amusement Park.



Hammond and Irwin

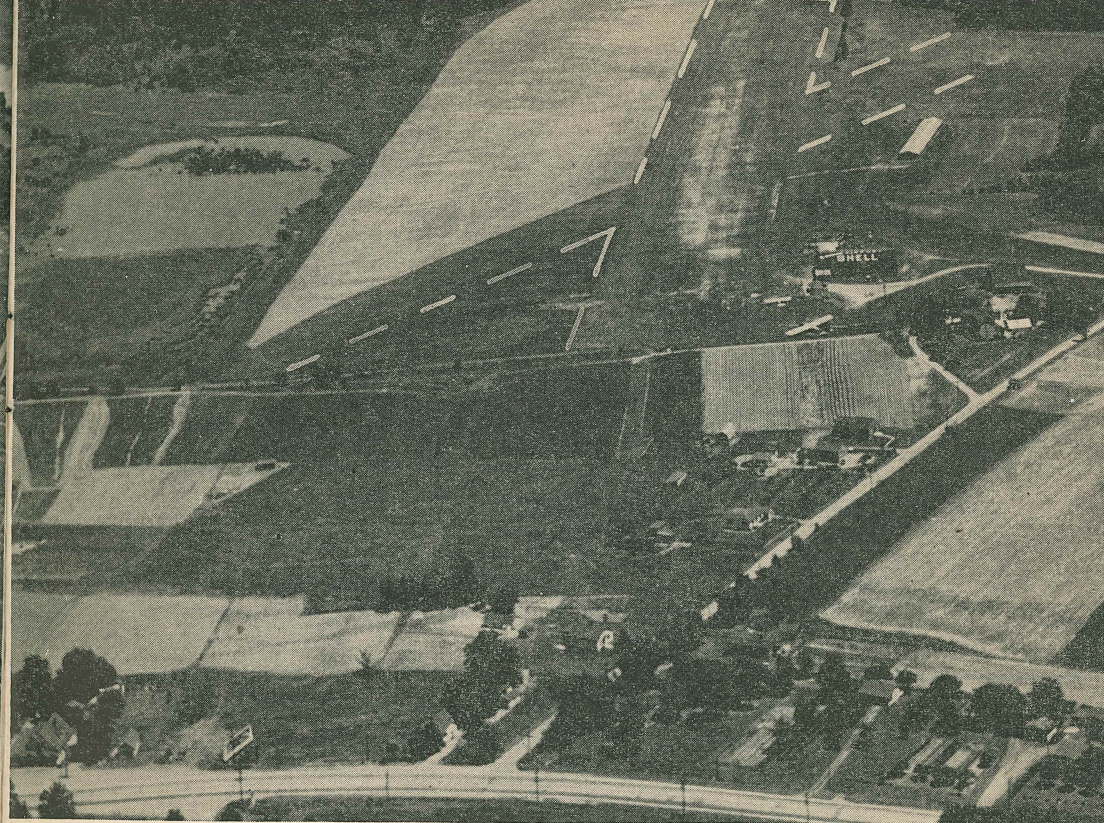
ST. CHARLES—Pop. 10,803, "Smart Field" (formerly "Neubeiser"), Navy Auxiliary Field. 8 miles NE of St. Charles. Inactive. No service.



Hammond and Irwin

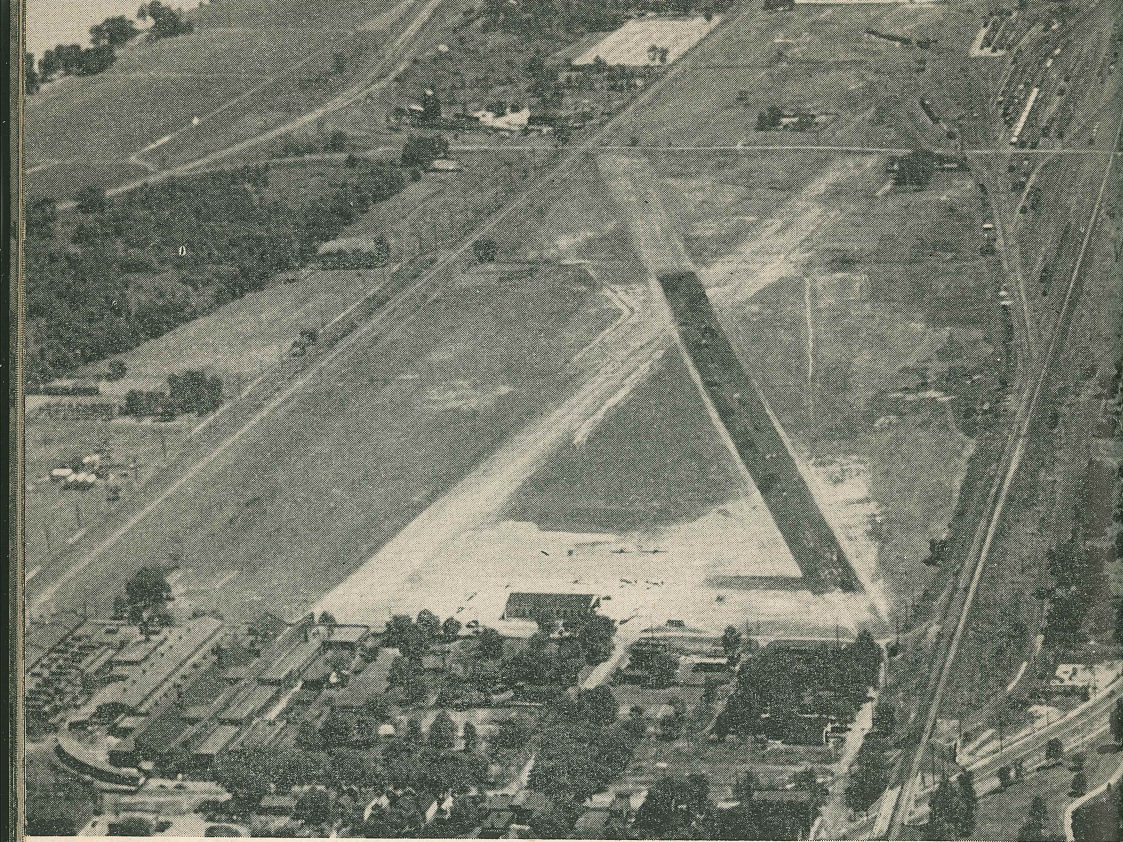
ST. LOUIS (KIRKWOOD)—Pop. 12,132, “Sylvan Beach Airport,” privately owned, Frank Kaufmann, Mgr., tel. Fenton 71R2, 180 acres 2 mi. NNW of Fenton on U. S. 66. 3 turf strips: N-S 4200, E-W 3400, NE-SW 5400; Elev. 442; pole line N. Wind sleeve, field markers, oil & 80 oct. gas day-light hrs., mechanic service & repair parts, hangars, tie-downs, taxi, refreshment & lunchroom service, charter service. Portable runway lights available. Weather via tel. Lambert Field. Hotels in city & cabins on Meramec; hunting and fishing in season.

ST. LOUIS (KIRKWOOD)—Pop. 12,132, “Weiss Airport,” privately owned, Harley E. Weiss, Mgr. tel. Fenton 105, on U. S. 66, 4 mi. SW Kirkwood. 1 turf strip N-S 1500x400; adjoining landing facilities of Sylvan Beach Airport used; Elev. 430; Pole line N. Wind sleeve, hangars, tie-downs, mechanic service with limited stock repair parts, oil & 80 oct. gas 24 hrs., refreshment & lunchroom, taxi & charter service. Hotels in city and cabins on Meramec; fishing & hunting in season.



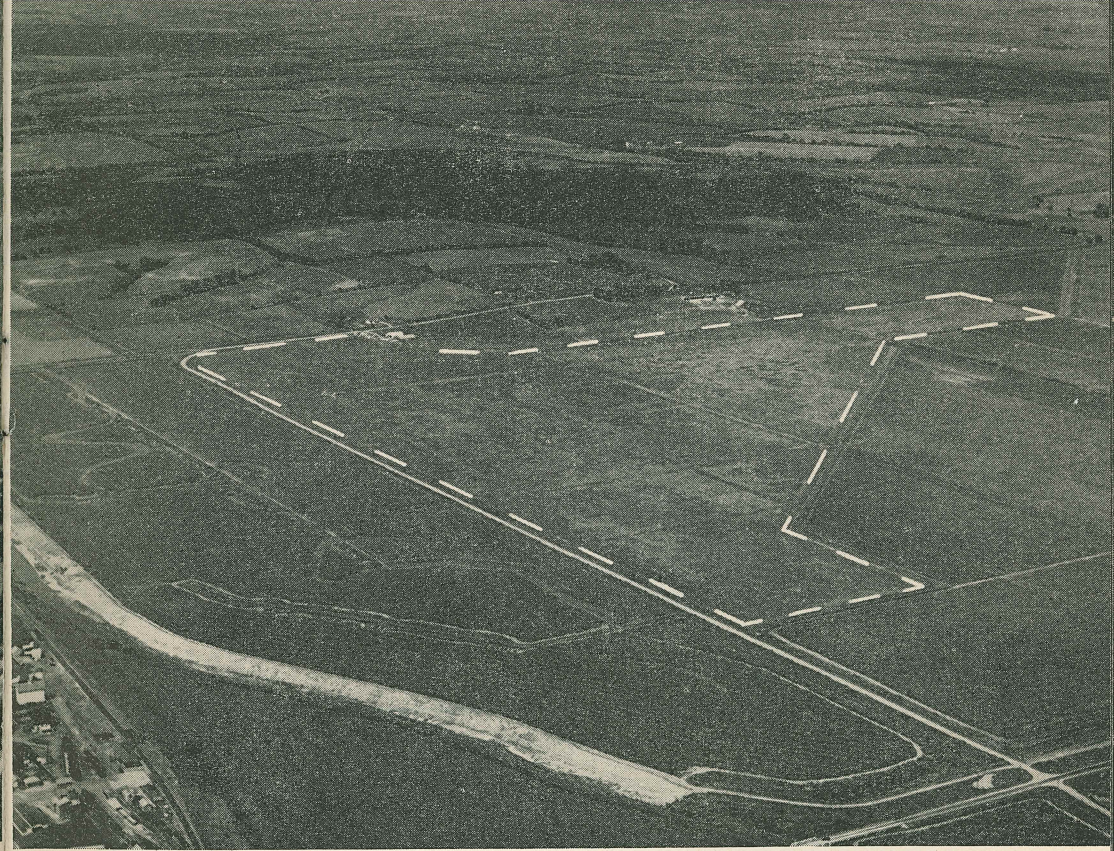
Massie—DORAD

ST. LOUIS (ARNOLD)—Pop. 50, “Starling Airport,” privately owned, Chas. Stockstrom, Mgr., tel. Blackrock 2011, 110 acres on U. S. 61 and Meramec River. 2 turf strips: SE-NW 2650x100 & N-S 1800x100; Elev. 615. “Starling” on hangar, wind sleeve, field markers, hangars, tie-downs, charter service, 80 & 91 oct. gas & oil, daylight hrs., limited mechanic service, refreshments. Taxi & bus to St. Louis. Weather Lambert Field. Tourist cabins 2 mi. Hunting and fishing in season.



Massie—DORAD

ST. LOUIS—Pop. 816,048, "Ross Airport" municipally and privately owned, Walter W. Ross, Mgr., tel. Colfax 8955, 72 acres between Broadway & Miss. River at approx. 7700 N. 2 runways: N-S 2850x100 turf, & NW-SE 3000x100 oiled surface, (Use runways only); Elev. 430; CAUTION: obstructions. Wind sleeve, hangar, tie-downs, oil & 80 & 91 oct gas available 24 hrs., A & E mechanic, limited stock repair parts, & complete overhaul small craft. Charter service. Taxi. 1 block from car line. Weather tel. Lambert Field.



Massie—DORAD

TARKIO—Pop. 2200, Municipal, Robt. Graf, Mgr., tel. 19, 162 acres, 1 mile ENE of Tarkio, on Missouri 59. 3 turf strips: N-S 3980x500, E-W 3460x500, NE-SW 3680x500; Elev. 918ME; Obstructions 50' Trees to N. Field boundary markers, field lighted, rotating beacon, obstructions lighted, wind sleeve, TEE, oil and 80 oct. gas, repair shop, office, modern rest rooms, 3 hangars. CAA Weather station on field, 24 hr. service. Hotel accommodations in city. Taxi, private car. Point of interest: Tarkio College.

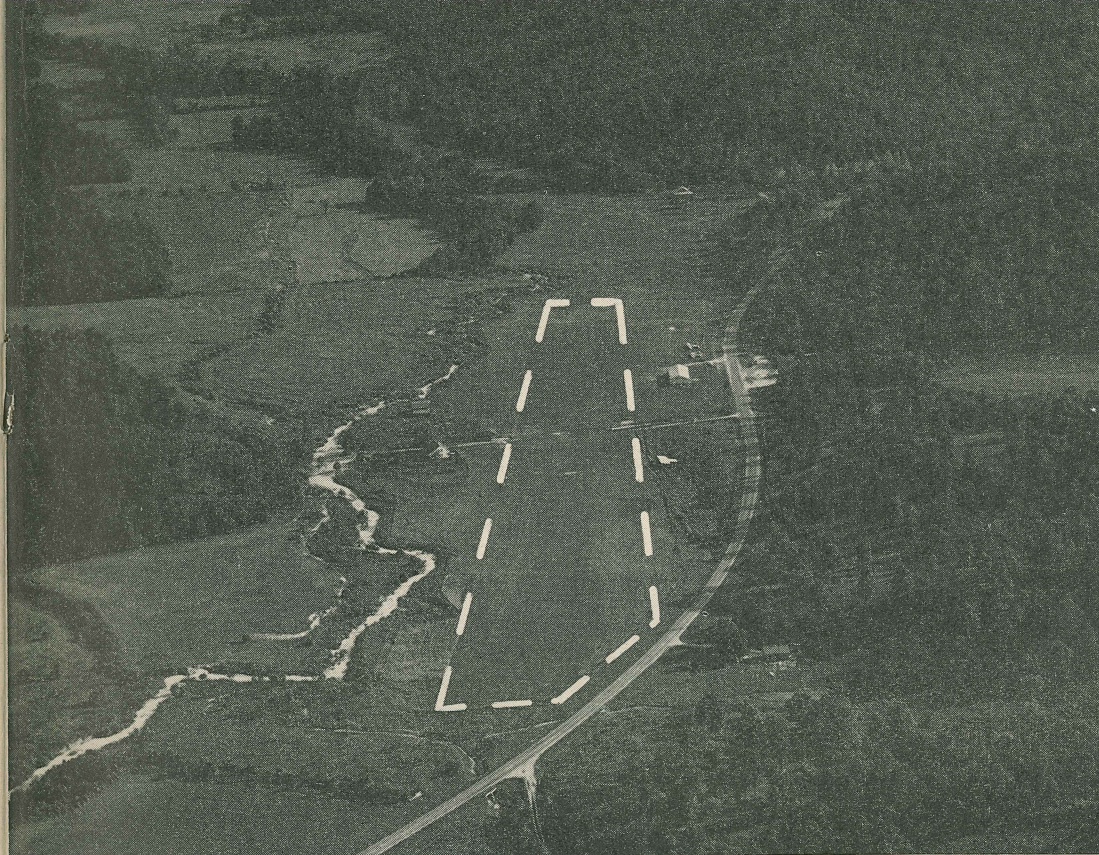
TRENTON—Pop. 7100, privately owned, Mrs. Merle Vaughn, Mgr., 120 acres, 1.2 miles NW on county road, Rock Island R.R. ½ mile E. 1 turf strip: N-S 2600x300; Elev. 790E; smokestack south of field. No service at present. Hotel accommodations and cabins in city. Taxi and private car.

* * * *

UDALL“Marycrest Airport,” privately owned, C. P. Baker, Mgr., E side Norfolk Lake near Lick Creek. 3 mi. S. of Mo. 80 & 1 mi. W. Udall. 1 turf strip: N-S 1800x100; Elev. 600E. Wind sleeve, oil & 80 oct. gas, tie-downs & cabins available, dining room & refreshment service. Fishing site, boats & motors for rent. CAUTION. Short and rough.

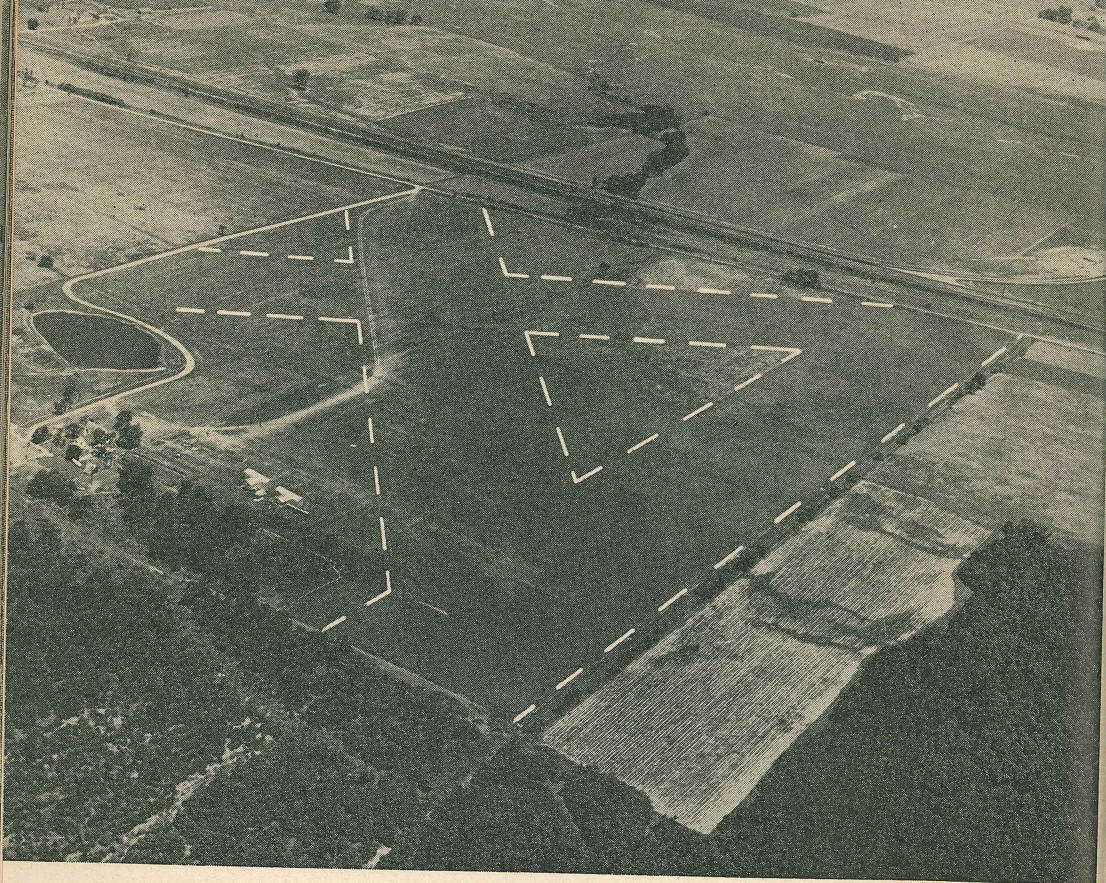
* * * *

UNIONVILLE—Pop. 2100, privately owned, L. W. McCalment, Mgr., 120 acres 1.5 miles ESE of city on Missouri 4. 2 turf landing strips: N-S 1300x100, E-W 1850x100; Elev. 1100E; 60' pole line on N boundary. Wind sleeve, hangar 50x60, small house for office, oil and 73 oct. gas, daylight hrs. only. Transportation—private car or taxi. Hotel in city.



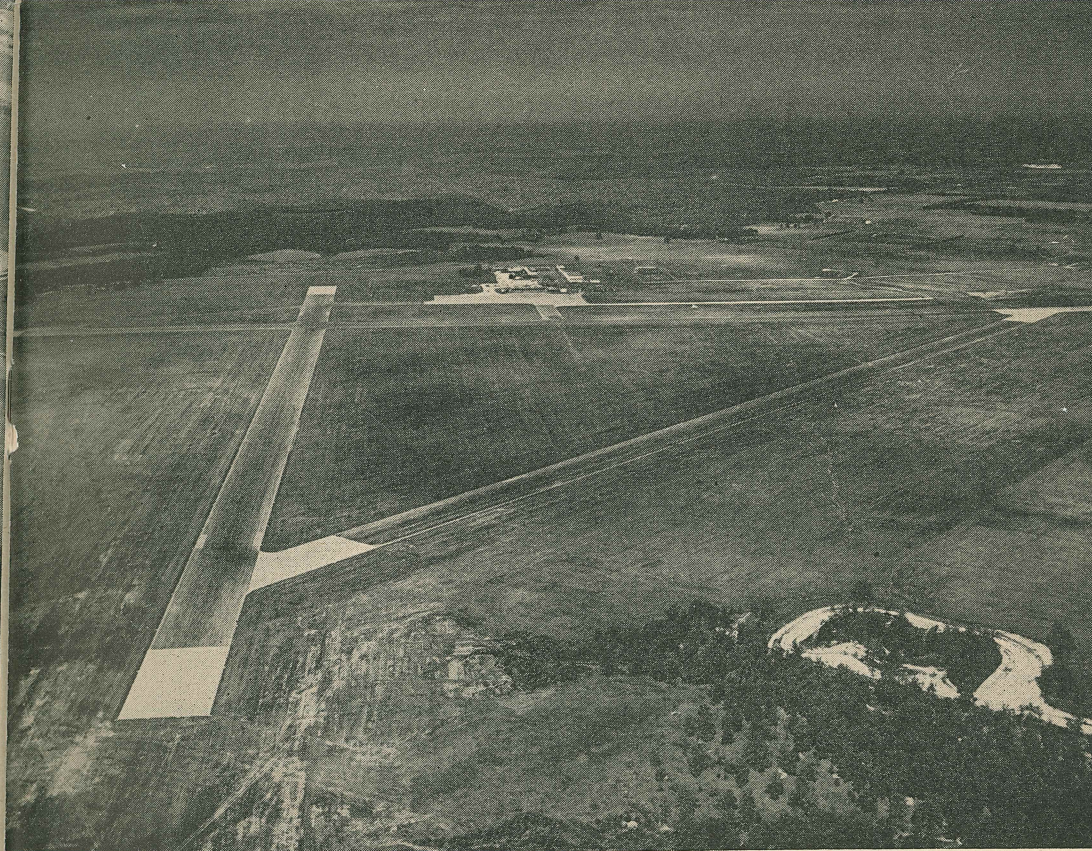
Hammond and Irwin

VAN BUREN—Pop. 458, privately owned, Wm. E. Standley, Mgr., tel. 871, 40 acres 3 mi. NE on U. S. 60. 1 landing strip: N-S 2400x300, (Use with caution); Elev. 560. Wind sleeve, field markers, hangars, tie-downs, charter service, refreshments. 80 oct. gas & oil daylight hrs., limited mechanic service. Hotel accommodations in town. Hunting & fishing in season; Big Spring State Park, Midco Spring, Clear Spring & Gravel Springs—along Current River—N of Van Buren.



Massie—DORAD

VERSAILLES—Pop. 1,071, privately owned, Charles Harris, Jr., Mgr., tel. 2102, 87 acres 2 mi. ENE of courthouse. 3 turf strips: N-S 2000, NE-SW 1902 & NW-SE 2552; Elev. 1050 E; power line N, NE & NW. Wind sleeve, TEE, field markers, hangars, tie-downs, charter service, oil & 80 oct. gas 24 hrs., limited mechanic services, refreshments. Weather—radio every 30 min. Airport car. Hotel accommodations in town & at airport; hunting & fishing in season. Near Lake of the Ozarks.



Witman

VICHY—Pop. 120, AAF field—temp. inactive, 1206 acres on U. S. 63 & Mo. 68. 3 asphalt runways: NE-SW 5500x150, NW-SE 5500x150 & N-S 5000x150; Concrete warming mats & taxiways; Elev. 1120. Wind sleeve, tetrahedron, field markers (night on emergency), hangars, beacon, floodlights, radio, control tower. CAA Weather station on field. Hotel accommodations in Rolla. Hunting & fishing in season; Gasconade River.

WARRENSBURG—Pop. 6000, privately owned, Harold Jones, Mgr., tel. 37F41, 80 acres 7.5 miles SSW of city on county gravel road. 3 turf strips: NW-SE 2200x300, NE-SW 2100x300, N-S 1950x300; Elev. 860; 20' pole line on W edge of field. Wind sleeve, TEE, oil and 80 oct. gas—daylight hrs., repair shop, 3 hangars, modern rest rooms, refreshments. Weather information phone Sedalia AAF. Taxi and private car. Hotels in city. Point of interest: Central Missouri State Teachers College.

* * * *

WARRENSBURG—Pop. 6000, "Marrs," privately owned, Marshall Lakin, Mgr., 120 acres 2½ miles west on U. S. 50. 2 turf landing strips: NE-SW 2600x400, NW-SE 2800x400; Elev. 890. Wind sleeve, TEE, oil and 80 and 90 oct. gas, multiple T-Hangars, repair shop, tie-downs, soft drinks. Taxi. Hotels in city. Point of interest: Central Missouri State Teachers College.

* * * *

WEST PLAINS—Pop. 4,026, "Skyhaven," privately owned, C. P. Baker, Mgr., tel. 17F2 or 103, 3.2 mi. NW of courthouse on U. S. 63. 3 turf strips: N-S 1800x300, E-W 2200x300 and SE-NW 2600x300; Elev. 1049. Wind sleeve, tie-downs, refreshments, taxi & private car, oil & 80 oct. gas—daylight hrs., charter service. Hotel accommodations in city. Hunting & fishing in season. CAUTION—obstructions.

* * * *

WINDSOR—Pop. 2,373, privately owned, E. M. Huston, Mgr., tel. 52F16 or 25; S of Mo. 52, 4.3 mi. E of town. 2 turf strips: N-S 2500x250 & E-W 2500x250; Elev. 932E. Wind sleeve, field markers, hangars, tie-downs, airport car, charter service, oil & 80 oct. gas 24 hrs., limited mechanic service, refreshments in summer. Weather tel. Sedalia AAF. Hotel accommodations in town. Hunting & fishing in season.

Note: The following airports are listed on this page because of the late date that information was received:

CARROLLTON—Pop. 4070, privately owned, 5 miles south of town on east side of U. S. 65. 1 turf landing strip: NE-SW. Oil and 80 oct. gas, hangar.

DIXON—Pop. 741, privately owned, Roy H. MacGregor, Manager, ¾ mi. W on Mo. 133. 2 turf landing strips: E-W and ENE-WSW. Field under construction; facilities unknown.

FULTON—Pop. 8297, "Sky Go Farm," private airport, Henry Danuser, owner, tel. 15, 3 mi. NW of town. 2 turf landing strips: N-S 1800x75, E-W 1800x75. Wind sleeve, hangar, boundary markers.

SLATER—Pop. 3070, Municipal, D. D. Burr, Mgr., ½ mi. NW on Missouri "C." 3 turf landing strips: N-S 2340x300, NE-SW 2600x300 and E-W 2000x300; Elev. 850. Wind sleeve, TEE, field markers, T hangar. Call Standard Service Station for oil or gas.

TRENTON—Pop. 7100, "Embry Field," privately owned, 4 mi. SSE on U. S. 65. 2 turf landing strips: NE-SW, and E-W—size unknown. CAUTION: Wires on E, strips freshly graded. Oil and 80 oct. gas, hangar.

WARRENTON—Pop. 1254. Airport under construction at east edge of town. Facilities unknown.

AIR NAVIGATION RADIO AIDS IN MISSOURI

Location	Freq., Ident.	Sta. Class, Bear. and Dist.	Freqs. Guarded, Hrs. of Oper., Remarks.
Advance (Int.)	317 (AF)	SBMRAZ-DT, 354°, 1.5	(4)
Chillicothe (Int.)	242(CK)	MHT	(4)
Excelsior Springs FM	(-)	FM, 52°, 27	Kansas City
Joplin	400(JH) (116.1)	BMRLZ-VDT, 172°, 6.2	(4); 116.1
Kansas City	359(KC)	SBRAZ-DTX	(4)
Kansas City Arpt.	278(126.18) (118.3)	AC(ILS), 148°, 3	(4), 116.1, 131.9, 126.18, 118.3
Kirksville	391(KR)	BMRLZ-DT, 333°, 0.9	(4)
Linkville FM	(- - - -)	FM, 328°, 11.4	Kansas City
Marshall (Int.)	281(MH)	MHT	(4)
New Florence (Int.)	385(ST)	MHT	(4)
St. Joseph (Rosecrans)	341(ZJ)	SBMRLZ-DT, 359°, 3.7	(4)
St. Louis	209(LS)	SBRAZ-DTX	(4)
St. Peters FM	(- - - -)	FM, 273°, 14.2	St. Louis
Sedalia (Knobnoster) (Army)	368 (DSM)	BMRLZ	
Sedalia AAF	396 (126.18)	CA(ILS); 220°, 3	(4); 126.18
Spanish Lake FM	(- -)	FM, 69°, 7.8	St. Louis
Springfield (Municipal)	254(SX) (116.1)	SBRAZ-VDT, 134°, 4.3	(4); 116.1
Vichy	344(OM) (116.1)	BMRLZ-VDT, 310°, 2.7	(4); 116.1

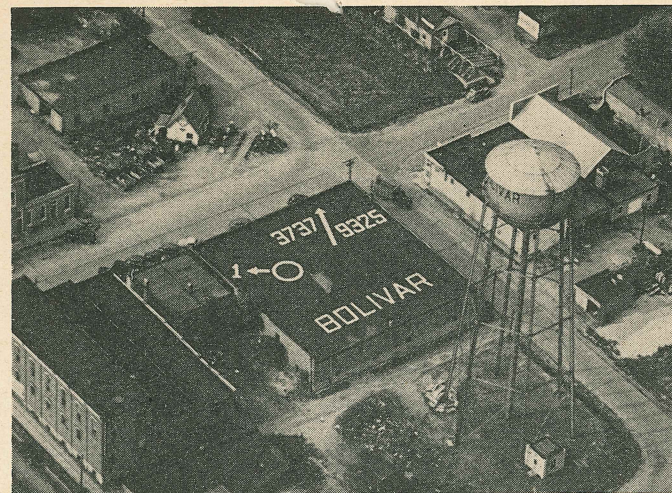
LEGEND

- (3)—Station guards 3105, 4495, 6210 kcs. ILS —Instrument Landing System.
 (4)—Station guards 3105, 4495, 6210, 3117.5 kcs. (7-24)—Hours of operation (7 a.m. to midnight) on a
 24-hour clock basis.
 Parenthetical Numbers in the Frequency Column indicate VHF on which voice is available.

RADIO CLASS DESIGNATIONS

- | | |
|--|--|
| <p>AC..... Approach Control Tower, CAA
 B..... Scheduled Broadcast Station (broadcasts weather reports at 15 and 45 minutes after the hour)
 C..... Control Tower, CAA
 CA..... Control Tower, Army
 CI..... Control Tower (City, County, Private, etc.)
 CN..... Control Tower, Navy
 D..... Distantly controlled
 FM..... VHF fan type marker (100 watts)
 FMK..... Compass locator station when combined with fan marker
 GCA..... Ground control approach system
 H..... Non-directional radio-beacon (homing), power 50 watts or more
 ILS..... Instrument Landing System
 IM..... VHF boundary marker
 K..... Independent compass locator station
 LFM..... VHF fan type marker, low powered (5 watts not over 10 miles from range)
 MH..... Non-directional radio-beacon (homing), power less than 50 watts
 ML..... Range (loop radiators), power less than 50 watts</p> | <p>MMK... Compass locator station when combined with middle marker of Instrument Landing System
 MRA.... Range (adcock, vertical radiators), power more than 50, less than 150 watts
 MRL.... Range (loop radiators), power more than 50, less than 150 watts
 OM..... VHF outer marker
 OMK.... Compass locator station when combined with outer marker of Instrument Landing System
 P..... Point to point radio
 RA..... Range (adcock, vertical radiators), power 150 watts or more
 RL..... Range (loop radiators), power 150 watts or more
 S..... Simultaneous transmission of range signals and voice
 T..... Teletype
 TX..... Principal teletype
 V..... Voice communication with aircraft
 VAR.... Visual-aural VHF range
 W..... Without voice facilities
 Z..... VHF station location marker at a range station</p> |
|--|--|

N.B.—Variation is computed at the station. The distance from station to field is computed from the center of the range station to the nearest edge of the usable area of the airport. The bearing is that from the range station to airport or fan marker.



Massie—DORAD

AIRMARKING

The following Missouri communities are reported as being airmarked:

- | | | |
|--|--|---|
| Adrian
Albany
Appleton City
Atlanta
Aurora
Blue Eye
Bolivar
Branson
Brunswick
Cabool
California
Camdenton
Cameron
Cape Girardeau
Carrollton
Caruthersville
Cassville
Centralia
Charleston
Clarence
Clinton
Concordia
Corder
Craig
Crystal City
Davisville
Desloge
DeSoto
Edina
Eldon
Fair Play
Farmington
Fayette
Fredericktown | Fulton
Gainesville
Gallatin
Granby
Granger
Grant City
Greenfield
Hannibal
Harrisonville
Hayti
Henrietta
Hermann
Houston
Iberia
Jackson
Kahoka
Kennett
Kirksville
Lathrop
Lebanon
Lexington
Licking
Lockwood
Louisiana
Macon
Marceline
Marshfield
DeSoto
Martinsville
Maryville
Eldon
Memphis
Milan
Monett
Fayette
Montgomery City | Mound City
Mountain View
Nevada
New Madrid
Poplar Bluff
Ravenwood
Rich Hill
Risco
Rolla
St. Charles
St. Clair
St. James
St. Joseph
Savannah
Seymour
Shelbyville
Sikeston
Spickard
Stanberry
Steelville
Sullivan
Trenton
Troy
Union Star
Unionville
Van Buren
Versailles
Warrenton
Warsaw
Waynesville
Webb City
West Plains
Willow Springs |
|--|--|---|

IDENTIFY YOUR TOWN TO THE AIR TRAVELER

Complete information on airmarking may be obtained by addressing a letter to Division of Resources and Development, State Office Building, Jefferson City, Missouri.

INDEX

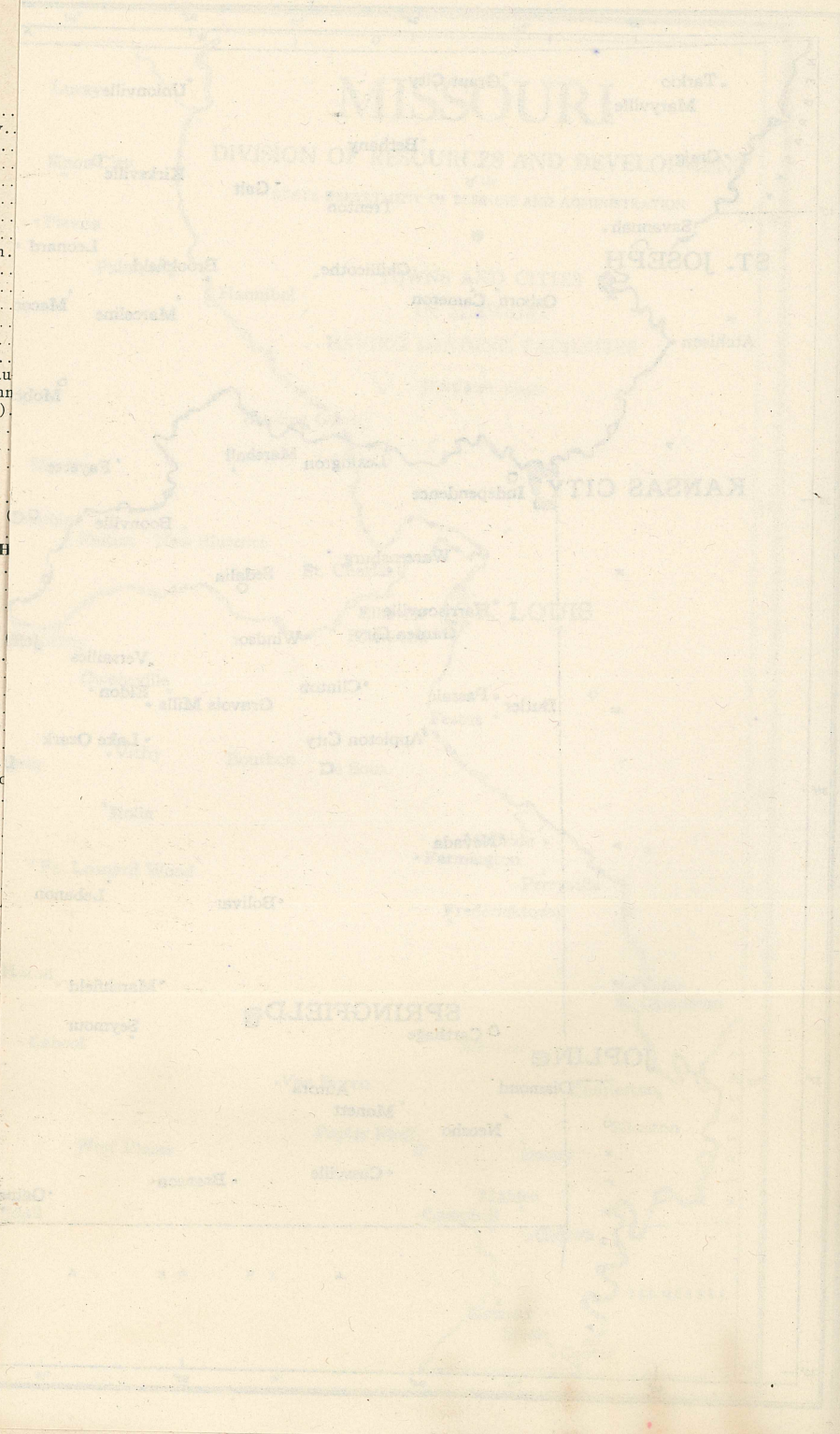
Note: **L** indicates lighted field
H indicates hard surface runways

Advance (L).....	Page 2
Appleton City.....	2
Atchison.....	2
Aurora.....	3
Bethany.....	4
Bolivar.....	5
Boonville.....	5
Bourbon.....	5
Bowling Green.....	6
Branson.....	6
Brookfield.....	6
Butler.....	7
Cabool.....	7
Cameron.....	7
Campbell.....	7
Cape Girardeau—	
Cape Commercial.....	8
Harris (H).....	9
Carthage.....	10
Cassville.....	11
Charleston.....	12
Chillicothe—	
Baileys.....	13
Municipal (L, H).....	14
Clinton.....	15
Columbia (L, H).....	16
Cooter (H).....	17
Craig.....	17
DeSoto.....	17
Dexter—	
Municipal (H).....	18
Wards.....	19
Diamond.....	19
Eldon.....	20
Fayette.....	21
Farmington.....	21
Festus.....	22
Fredericktown.....	22
Ft. Leonard Wood (H).....	22
Fulton.....	23
Gainesville.....	23
Galt.....	24
Garden City.....	24
Gideon (H).....	25
Grant City.....	25
Gravois Mills (Adkins).....	26
Hannibal.....	27
Harrisonville.....	27
Houston.....	27
Iberia.....	28
Independence.....	28
Jefferson City.....	28
Joplin—	
Municipal (L, H).....	29
Harper.....	29
Kansas City—	
Municipal (L, H).....	30
Grandview (L, H).....	31
Heart of America.....	32
Ong.....	33
Kennett—	
Sexton.....	34
American Legion.....	34
Knox City.....	34
Kirksville—	
Municipal (L, H).....	35
Airpark.....	36
Lebanon (L).....	36
Leonard.....	36

Lexington.....	Page 37
Luray (L).....	38
McBride (H).....	39
Macon.....	39
Malden (H).....	40
Marceline.....	40
Marshall—	
Municipal (L).....	41
Nicholas.....	42
Maryville.....	43
Marshfield.....	43
Mexico.....	44
Moberly (H).....	45
Monett.....	46
Neosho—	
Commercial.....	46
Municipal (L).....	47
Nevada.....	48
Osborn (L).....	49
New Florence (L).....	49
Lake Ozark.....	50
Owensville.....	50
Palmyra.....	50
Passaic.....	51
Perryville.....	51
Plevna.....	51
Poplar Bluff.....	52
Rolla.....	53
Savannah.....	54
Seymour.....	54
Sedalia—	
Municipal.....	54
Army Air Field (L, H).....	55
Sikeston.....	56
Springfield—	
Municipal (L, H).....	57
McFarland.....	58
Queen City.....	59
Steele (H).....	60
St. Joseph—	
Glenota.....	60
Rosecrans (L, H).....	61
St. Louis Metropolitan Area—	
Lambert (L, H).....	62
Ellisville.....	63
Petty Marine.....	63
Kratz.....	64
Meramec.....	65
St. Charles.....	66
Smart (H).....	67
Sylvan Beach.....	68
Weiss.....	68
Starling.....	69
Ross.....	70
Tarkio (L).....	71
Trenton.....	72
Udall.....	72
Unionville.....	72
Van Buren.....	73
Versailles.....	74
Vichy (L, H).....	75
Warrensburg—	
Commercial.....	76
Marrs.....	76
West Plains.....	76
Windsor.....	76
Additional Facilities.....	77
Navigation Aids.....	78
Air Marking.....	79



Advance (L) ...
 Appleton City ...
 Atchison ...
 Aurora ...
 Bethany ...
 Bolivar ...
 Boonville ...
 Bourbon ...
 Bowling Green ...
 Branson ...
 Brookfield ...
 Butler ...
 Cabool ...
 Cameron ...
 Campbell ...
 Cape Girardeau
 Cape Com ...
 Harris (H) ...
 Carthage ...
 Cassville ...
 Charleston ...
 Chillicothe—
 Baileys ...
 Municipal ...
 Clinton ...
 Columbia (L, H) ...
 Cooter (H) ...
 Craig ...
 DeSoto ...
 Dexter—
 Municipal ...
 Wards ...
 Diamond ...
 Eldon ...
 Fayette ...
 Farmington ...
 Festus ...
 Fredericktown ...
 Ft. Leonard W ...
 Fulton ...
 Gainesville ...
 Galt ...
 Garden City ...
 Gideon (H) ...
 Grant City ...
 Gravois Mills ...
 Hannibal ...
 Harrisonville ...
 Houston ...
 Iberia ...
 Independence ...
 Jefferson City ...
 Joplin—
 Municipal ...
 Harper ...
 Kansas City—
 Municipal ...
 Grandview ...
 Heart of A ...
 Ong ...
 Kennett—
 Sexton ...
 American ...
 Knox City ...
 Kirksville—
 Municipal ...
 Airpark ...
 Lebanon (L) ...
 Leonard ...



WEATHER INFORMATION

as of October 15, 1946

This list includes all locations in Missouri except military where aviation weather information is available.

City	Type Location	Telephone
Advance	CAA—Intermediate Field	KCDZ 113
Chillicothe	CAA—Municipal	87
Columbia	Weather Bureau—Municipal Airport	9471
Joplin	CAA—Municipal Airport	68
Kansas City	Weather Bureau—Municipal Airport	Norclay 4840
Kirksville	CAA—Municipal	LaPlata 2358
Marshall	CAA—Municipal	702
New Florence	CAA—Intermediate Field	48
St. Joseph	CAA—Weather Bureau—Rosecrans	2-3414
St. Louis	Weather Bureau—Lambert Municipal	Terryhill 5-3570
Springfield	Weather Bureau—Springfield Municipal	191
Tarkio	CAA—Municipal	19
Vichy	AAF, CAA Station	Vichy 6000

VISUAL SIGNALS FROM PORTABLE TRAFFIC SIGNAL LIGHT

Color and Type of Signal	Taxi-ing	Ready for Take-off	In Flight
STEADY GREEN	XXXXXXXX	Cleared for take-off	Cleared to land
FLASHING GREEN	Continue Taxi-ing	XXXXXXXXXXXX	XXXXXXXXXXXX
STEADY RED	Stop	Clear the Runway Immediately, and Wait	Give Way to Other Aircraft and Continue Circling
FLASHING RED	Return to Hangar Line	Return to Hangar Line	Return and land
ALTERNATING RED AND GREEN	General Warning Signal—Exercise Extreme Caution		

Traffic and Taxi Patterns have been established at busy airports to illustrate the desired flow of aircraft on the ground and in the air under specified wind conditions. If the traffic pattern is not known, follow other aircraft unless otherwise instructed.

If a pilot does not receive either radio or visual signal from the tower when approaching for a landing, he should make at least one complete circle of the airport conforming to the traffic pattern, and then start approach for a landing. The pilot should be on the alert for a signal from the tower and maintain a watch for other aircraft.



Massie—DORAD

Good hunting and fishing areas are only a few minutes from home.

Massie—DORAD

